

betaCstF-64 variant 1/ betaCstF-64 variant 3 (mouse) Antibody (internal region)
Peptide-affinity purified goat antibody
Catalog # AF3891a

Specification

**betaCstF-64 variant 1/ betaCstF-64 variant 3 (mouse) Antibody (internal region) -
Product Information**

Application	WB
Primary Accession	Q8BIQ5.2
Other Accession	ACF05702.1 , ACF05700.1 , 108062 (mouse)
Reactivity	Mouse
Host	Goat
Clonality	Polyclonal
Concentration	0.5 mg/ml
Isotype	IgG

**betaCstF-64 variant 1/ betaCstF-64 variant 3 (mouse) Antibody (internal region) -
Additional Information**

Other Names

Cstf2; cleavage stimulation factor, 3' pre-RNA subunit 2; 64kDa; C630034J23Rik; Cstf64; CF-1 64 kDa subunit; CSTF 64 kDa subunit; alphaCstF-64 variant 4; betaCstF-64 variant 1; betaCstF-64 variant 3; cleavage stimulation factor 64 kDa subunit; cleavage st

Format

0.5 mg/ml in Tris saline, 0.02% sodium azide, pH7.3 with 0.5% bovine serum albumin

Storage

Maintain refrigerated at 2-8°C for up to 6 months. For long term storage store at -20°C in small aliquots to prevent freeze-thaw cycles.

Precautions

betaCstF-64 variant 1/ betaCstF-64 variant 3 (mouse) Antibody (internal region) is for research use only and not for use in diagnostic or therapeutic procedures.

**betaCstF-64 variant 1/ betaCstF-64 variant 3 (mouse) Antibody (internal region) -
Protein Information**

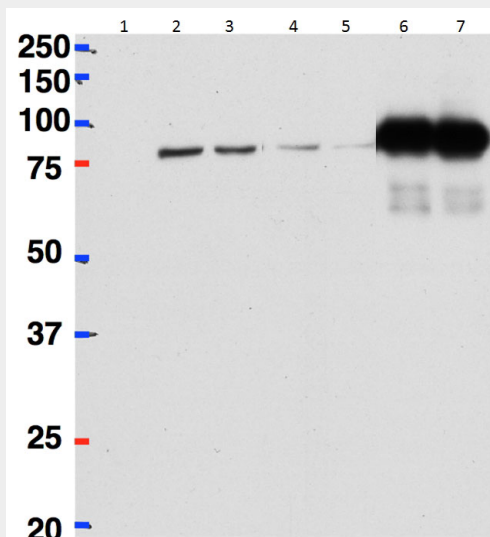
**betaCstF-64 variant 1/ betaCstF-64 variant 3 (mouse) Antibody (internal region) -
Protocols**

Provided below are standard protocols that you may find useful for product applications.

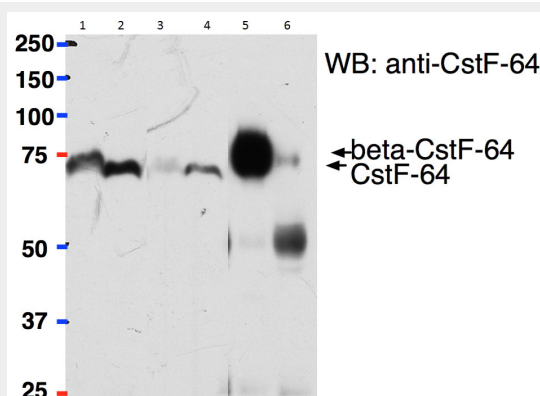
- [Western Blot](#)
- [Blocking Peptides](#)
- [Dot Blot](#)

- [Immunohistochemistry](#)
- [Immunofluorescence](#)
- [Immunoprecipitation](#)
- [Flow Cytometry](#)
- [Cell Culture](#)

betaCstF-64 variant 1/ betaCstF-64 variant 3 (mouse) Antibody (internal region) - Images



HeLa lysate either in RIPA buffer (lanes 1, 2, 4, 6) or TX100 buffer (lanes 3, 5, 7) overexpressing Mouse β Cstf-64 (DYKDDDDK tagged) immunoprecipitated using AF3891a (2ug) with Protein G-coated magnetic beads in lanes 6 and 7 and probed with anti-DYKDDDDK (1/1000). Mock-transfected HeLa in Lane 1. A 1/40th part of the lysate was loaded in lanes 2 and 3 before IP and in lanes 4 and 5 after IP. Primary incubations were for 1 hour. Detected by chemiluminescence. Data obtained from Dr P Grozdanov, Texas Tech University Health Sciences Center, USA.



AF3891a (2ug) used to pull down β Cstf-64 from Mouse Brain (lane 5) lysate (500ug protein) while it cannot pull down Cstf-64 from Mouse Liver (lane 6) lysate (500ug protein) using Protein G-coated magnetic beads. A 1/40th part of the lysates were loaded in lanes 1 (Brain) and 2 (Liver) before IP and in lanes 3 (Brain) and 4 (Liver) after IP. Western blot probed with mouse anti- β Cstf-64/Cstf-64 antibody and detected by chemiluminescence. Data obtained from Dr P Grozdanov, Texas Tech University Health Sciences Center, USA.

betaCstF-64 variant 1/ betaCstF-64 variant 3 (mouse) Antibody (internal region) - Background

This antibody recognizes mouse variants 1 and 3 of the reported beta isoform (ACF05702.1;

ACF05700.1).

**betaCstF-64 variant 1/ betaCstF-64 variant 3 (mouse) Antibody (internal region) -
References**

A family of splice variants of CstF-64 expressed in vertebrate nervous systems. Shankarling GS, Coates PW, Dass B, Macdonald CC. BMC Mol Biol. 2009 Mar 12;10:22. PMID: 19284619