

SLC6A12 / BGT1 Antibody (C-Term)
Peptide-affinity purified goat antibody
Catalog # AF3900a**Specification**

SLC6A12 / BGT1 Antibody (C-Term) - Product Information

Application	WB, E
Primary Accession	P48065
Other Accession	NP_003035.3 , 6539
Reactivity	Human
Host	Goat
Clonality	Polyclonal
Concentration	0.5 mg/ml
Isotype	IgG
Calculated MW	69368

SLC6A12 / BGT1 Antibody (C-Term) - Additional Information**Gene ID** 6539**Other Names**

Sodium- and chloride-dependent betaine transporter, BGT-1, Na(+)/Cl(-) betaine/GABA transporter, Solute carrier family 6 member 12, SLC6A12

Dilution

WB~~1:1000

E~~N/A

Format

0.5 mg/ml in Tris saline, 0.02% sodium azide, pH7.3 with 0.5% bovine serum albumin

Storage

Maintain refrigerated at 2-8°C for up to 6 months. For long term storage store at -20°C in small aliquots to prevent freeze-thaw cycles.

Precautions

SLC6A12 / BGT1 Antibody (C-Term) is for research use only and not for use in diagnostic or therapeutic procedures.

SLC6A12 / BGT1 Antibody (C-Term) - Protein Information**Name** SLC6A12 ([HGNC:11045](#))**Function**

Transporter that mediates cellular uptake of betaine and GABA in a sodium- and chloride-dependent process (PubMed:7589472). May have a role in regulation of GABAergic transmission in the

brain through the reuptake of GABA into presynaptic terminals, as well as in osmotic regulation. Probably also involved in renal and hepatic osmotic regulation (By similarity).

Cellular Location

Basolateral cell membrane {ECO:0000250|UniProtKB:P31651}; Multi-pass membrane protein. Cell membrane {ECO:0000250|UniProtKB:P31651}; Multi-pass membrane protein. Note=In kidney, locates in basolateral membranes of renal medulla. In liver, locates in hepatocytes cell membrane. {ECO:0000250|UniProtKB:P31651}

Tissue Location

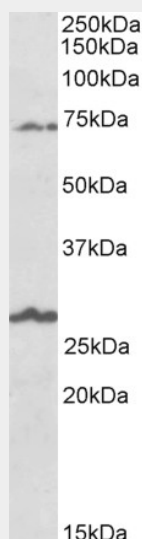
Expressed in kidney, liver, heart, skeletal muscle, placenta, and a widespread distribution in the brain

SLC6A12 / BGT1 Antibody (C-Term) - Protocols

Provided below are standard protocols that you may find useful for product applications.

- [Western Blot](#)
- [Blocking Peptides](#)
- [Dot Blot](#)
- [Immunohistochemistry](#)
- [Immunofluorescence](#)
- [Immunoprecipitation](#)
- [Flow Cytometry](#)
- [Cell Culture](#)

SLC6A12 / BGT1 Antibody (C-Term) - Images



AF3900a (1 µg/ml) staining of Human Olfactory bulb lysate (35 µg protein in RIPA buffer). Primary incubation was 1 hour. Detected by chemiluminescence.

SLC6A12 / BGT1 Antibody (C-Term) - Background

Reported variants represent identical protein: NP_001193860.1, NP_003035.3, NP_001116319.1, NP_001116320.1.

SLC6A12 / BGT1 Antibody (C-Term) - References

Association of SLC6A12 variants with aspirin-intolerant asthma in a Korean population. Pasaje CF, et al. Ann Hum Genet. 2010 Jul;74(4):326-34. PMID: 20597903