

ADRA1A Antibody (C-Term)
Peptide-affinity purified goat antibody
Catalog # AF3921a**Specification**

ADRA1A Antibody (C-Term) - Product Information

Application	WB, E
Primary Accession	P35348
Other Accession	NP_000671.2 , 148
Reactivity	Human
Host	Goat
Clonality	Polyclonal
Concentration	0.5 mg/ml
Isotype	IgG
Calculated MW	51487

ADRA1A Antibody (C-Term) - Additional Information**Gene ID** 148**Other Names**

Alpha-1A adrenergic receptor, Alpha-1A adrenoreceptor, Alpha-1A adrenoceptor, Alpha-1C adrenergic receptor, Alpha-adrenergic receptor 1c, ADRA1A, ADRA1C

Dilution

WB~~1:1000

E~~N/A

Format

0.5 mg/ml in Tris saline, 0.02% sodium azide, pH7.3 with 0.5% bovine serum albumin

Storage

Maintain refrigerated at 2-8°C for up to 6 months. For long term storage store at -20°C in small aliquots to prevent freeze-thaw cycles.

Precautions

ADRA1A Antibody (C-Term) is for research use only and not for use in diagnostic or therapeutic procedures.

ADRA1A Antibody (C-Term) - Protein Information**Name** ADRA1A**Synonyms** ADRA1C**Function**

This alpha-adrenergic receptor mediates its action by association with G proteins that activate a

phosphatidylinositol- calcium second messenger system. Its effect is mediated by G(q) and G(11) proteins. Nuclear ADRA1A-ADRA1B heterooligomers regulate phenylephrine(PE)-stimulated ERK signaling in cardiac myocytes.

Cellular Location

Nucleus membrane; Multi-pass membrane protein. Cell membrane; Multi-pass membrane protein. Cytoplasm Membrane, caveola. Note=Location at the nuclear membrane facilitates heterooligomerization and regulates ERK- mediated signaling in cardiac myocytes. Colocalizes with GNAQ, PLCB1 as well as LAP2 at the nuclear membrane of cardiac myocytes

Tissue Location

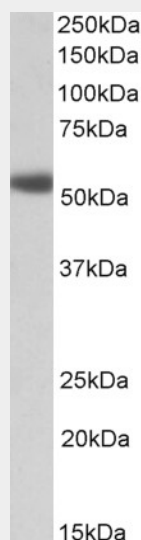
Expressed in heart, brain, liver and prostate, but not in kidney, lung, adrenal, aorta and pituitary. Within the prostate, expressed in the apex, base, periurethral and lateral lobe. Isoform 4 is the most abundant isoform expressed in the prostate with high levels also detected in liver and heart.

ADRA1A Antibody (C-Term) - Protocols

Provided below are standard protocols that you may find useful for product applications.

- [Western Blot](#)
- [Blocking Peptides](#)
- [Dot Blot](#)
- [Immunohistochemistry](#)
- [Immunofluorescence](#)
- [Immunoprecipitation](#)
- [Flow Cytometry](#)
- [Cell Culture](#)

ADRA1A Antibody (C-Term) - Images



AF3921a (1 µg/ml) staining of Human Prostate lysate (35 µg protein in RIPA buffer). Primary incubation was 1 hour. Detected by chemiluminescence.

ADRA1A Antibody (C-Term) - Background

This antibody is expected to recognize isoform 1 (NP_000671.2) only.

ADRA1A Antibody (C-Term) - References

Alpha1-adrenoceptor signaling in the human prostate involves regulation of p38 mitogen-activated protein kinase. Strittmatter F, Gratzke C, Walther S, Göttinger J, Beckmann C, Roosen A, Schlenker B, Reich O, Stief CG, Hennenberg M. Urology. 2011 Oct;78(4):969.e7-13. PMID: 21982020