

**IGFBP1 (aa156-170) Antibody (internal region)**  
Peptide-affinity purified goat antibody  
Catalog # AF3933a

**Specification**

---

**IGFBP1 (aa156-170) Antibody (internal region) - Product Information**

Application	WB, E
Primary Accession	<a href="#">P08833</a>
Other Accession	<a href="#">NP_000587.1</a> , <a href="#">3484</a>
Reactivity	Human
Host	Goat
Clonality	Polyclonal
Concentration	0.5 mg/ml
Isotype	IgG
Calculated MW	27904

**IGFBP1 (aa156-170) Antibody (internal region) - Additional Information**

**Gene ID** 3484

**Other Names**

Insulin-like growth factor-binding protein 1, IBP-1, IGF-binding protein 1, IGFBP-1, Placental protein 12, PP12, IGFBP1, IBP1

**Dilution**

WB~~1:1000  
E~~N/A

**Format**

0.5 mg/ml in Tris saline, 0.02% sodium azide, pH7.3 with 0.5% bovine serum albumin

**Storage**

Maintain refrigerated at 2-8°C for up to 6 months. For long term storage store at -20°C in small aliquots to prevent freeze-thaw cycles.

**Precautions**

IGFBP1 (aa156-170) Antibody (internal region) is for research use only and not for use in diagnostic or therapeutic procedures.

**IGFBP1 (aa156-170) Antibody (internal region) - Protein Information**

**Name** IGFBP1

**Synonyms** IBP1

**Function**

Multifunctional protein that plays a critical role in regulating the availability of IGFs such as IGF1

and IGF2 to their receptors and thereby regulates IGF-mediated cellular processes including cell migration, proliferation, differentiation or apoptosis in a cell-type specific manner (PubMed:<a href="http://www.uniprot.org/citations/11397844" target="\_blank">11397844</a>, PubMed:<a href="http://www.uniprot.org/citations/15972819" target="\_blank">15972819</a>). Also plays a positive role in cell migration by interacting with integrin ITGA5:ITGB1 through its RGD motif (PubMed:<a href="http://www.uniprot.org/citations/7504269" target="\_blank">7504269</a>). Mechanistically, binding to integrins leads to activation of focal adhesion kinase/PTK2 and stimulation of the mitogen-activated protein kinase (MAPK) pathway (PubMed:<a href="http://www.uniprot.org/citations/11397844" target="\_blank">11397844</a>). Regulates cardiomyocyte apoptosis by suppressing HIF-1alpha/HIF1A ubiquitination and subsequent degradation (By similarity).

#### **Cellular Location**

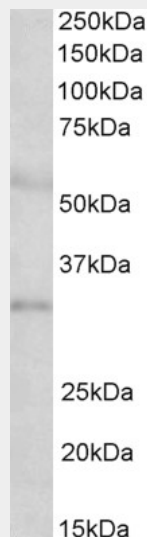
Secreted.

#### **IGFBP1 (aa156-170) Antibody (internal region) - Protocols**

Provided below are standard protocols that you may find useful for product applications.

- [Western Blot](#)
- [Blocking Peptides](#)
- [Dot Blot](#)
- [Immunohistochemistry](#)
- [Immunofluorescence](#)
- [Immunoprecipitation](#)
- [Flow Cytometry](#)
- [Cell Culture](#)

#### **IGFBP1 (aa156-170) Antibody (internal region) - Images**



AF3933a (2 µg/ml) staining of Human Placenta lysate (35 µg protein in RIPA buffer). Primary incubation was 1 hour. Detected by chemiluminescence.

#### **IGFBP1 (aa156-170) Antibody (internal region) - References**

IGFBP-1 is expressed specifically in ovarian clear cell adenocarcinoma. Sugita S, Morishita Y, Kano J, Furuya S, Shiba-Ishii A, Noguchi M. Histopathology. 2011 Apr;58(5):729-38. PMID: 21457161