

IGFBP1 Antibody (C-Term)
Peptide-affinity purified goat antibody
Catalog # AF3934a**Specification**

IGFBP1 Antibody (C-Term) - Product Information

Application	WB, E
Primary Accession	P08833
Other Accession	NP_000587.1 , 3484
Reactivity	Human
Host	Goat
Clonality	Polyclonal
Concentration	0.5 mg/ml
Isotype	IgG
Calculated MW	27904

IGFBP1 Antibody (C-Term) - Additional Information**Gene ID** 3484**Other Names**

Insulin-like growth factor-binding protein 1, IBP-1, IGF-binding protein 1, IGFBP-1, Placental protein 12, PP12, IGFBP1, IBP1

Dilution

WB~~1:1000

E~~N/A

Format

0.5 mg/ml in Tris saline, 0.02% sodium azide, pH7.3 with 0.5% bovine serum albumin

Storage

Maintain refrigerated at 2-8°C for up to 6 months. For long term storage store at -20°C in small aliquots to prevent freeze-thaw cycles.

Precautions

IGFBP1 Antibody (C-Term) is for research use only and not for use in diagnostic or therapeutic procedures.

IGFBP1 Antibody (C-Term) - Protein Information**Name** IGFBP1**Synonyms** IBP1**Function**

Multifunctional protein that plays a critical role in regulating the availability of IGFs such as IGF1

and IGF2 to their receptors and thereby regulates IGF-mediated cellular processes including cell migration, proliferation, differentiation or apoptosis in a cell-type specific manner (PubMed:11397844, PubMed:15972819). Also plays a positive role in cell migration by interacting with integrin ITGA5:ITGB1 through its RGD motif (PubMed:7504269). Mechanistically, binding to integrins leads to activation of focal adhesion kinase/PTK2 and stimulation of the mitogen-activated protein kinase (MAPK) pathway (PubMed:11397844). Regulates cardiomyocyte apoptosis by suppressing HIF-1alpha/HIF1A ubiquitination and subsequent degradation (By similarity).

Cellular Location

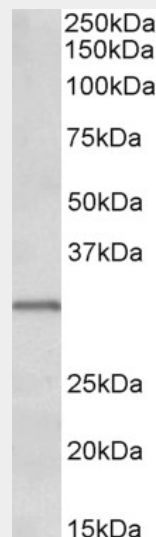
Secreted.

IGFBP1 Antibody (C-Term) - Protocols

Provided below are standard protocols that you may find useful for product applications.

- [Western Blot](#)
- [Blocking Peptides](#)
- [Dot Blot](#)
- [Immunohistochemistry](#)
- [Immunofluorescence](#)
- [Immunoprecipitation](#)
- [Flow Cytometry](#)
- [Cell Culture](#)

IGFBP1 Antibody (C-Term) - Images



AF3934a (0.1 µg/ml) staining of Human Placenta lysate (35 µg protein in RIPA buffer). Primary incubation was 1 hour. Detected by chemiluminescence.

IGFBP1 Antibody (C-Term) - References

IGFBP-1 is expressed specifically in ovarian clear cell adenocarcinoma. Sugita S, Morishita Y, Kano J, Furuya S, Shiba-Ishii A, Noguchi M. Histopathology. 2011 Apr;58(5):729-38. PMID: 21457161