

Stomatin Antibody (N-Term)
Peptide-affinity purified goat antibody
Catalog # AF3944a

Specification

Stomatin Antibody (N-Term) - Product Information

Application	WB, IHC, E
Primary Accession	P27105
Other Accession	NP_004090.4 , NP_937837.1 , 2040
Reactivity	Human
Host	Goat
Clonality	Polyclonal
Concentration	0.5 mg/ml
Isotype	IgG
Calculated MW	31731

Stomatin Antibody (N-Term) - Additional Information

Gene ID 2040

Other Names

Erythrocyte band 7 integral membrane protein, Protein 7.2b, Stomatin, STOM, BND7, EPB72

Dilution

WB~~1:1000
IHC~~1:100~500
E~~N/A

Format

0.5 mg/ml in Tris saline, 0.02% sodium azide, pH7.3 with 0.5% bovine serum albumin

Storage

Maintain refrigerated at 2-8°C for up to 6 months. For long term storage store at -20°C in small aliquots to prevent freeze-thaw cycles.

Precautions

Stomatin Antibody (N-Term) is for research use only and not for use in diagnostic or therapeutic procedures.

Stomatin Antibody (N-Term) - Protein Information

Name STOM ([HGNC:3383](#))

Function

Regulates ion channel activity and transmembrane ion transport. Regulates ASIC2 and ASIC3 channel activity.

Cellular Location

Cell membrane; Peripheral membrane protein; Cytoplasmic side. Cytoplasm, cytoskeleton. Cell membrane; Lipid-anchor; Cytoplasmic side. Membrane raft. Melanosome. Cytoplasmic vesicle {ECO:0000250|UniProtKB:P54116}. Note=Localizes to juxtannuclear structure probably derived from the Golgi apparatus (PubMed:9243190) Colocalizes with cortical actin microfilaments at small plasma membrane protrusions (PubMed:9243190). Associates with alpha-granular lipid rafts (PubMed:12130500). Translocates from the alpha-granular lipid rafts to the cell membrane on thrombin activation and selectively enriched in released microvesicles (PubMed:12130500). Identified by mass spectrometry in melanosome fractions from stage I to stage IV (PubMed:12643545).

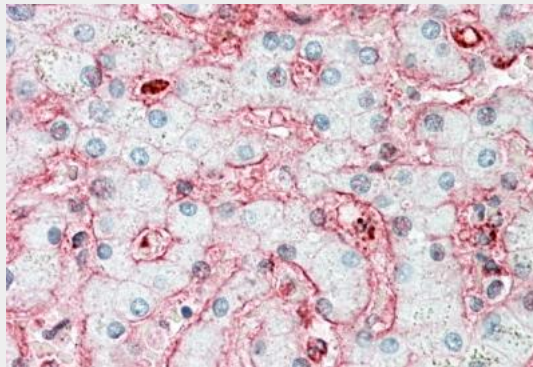
Tissue Location

Detected in erythrocytes (at protein level). Widely expressed.

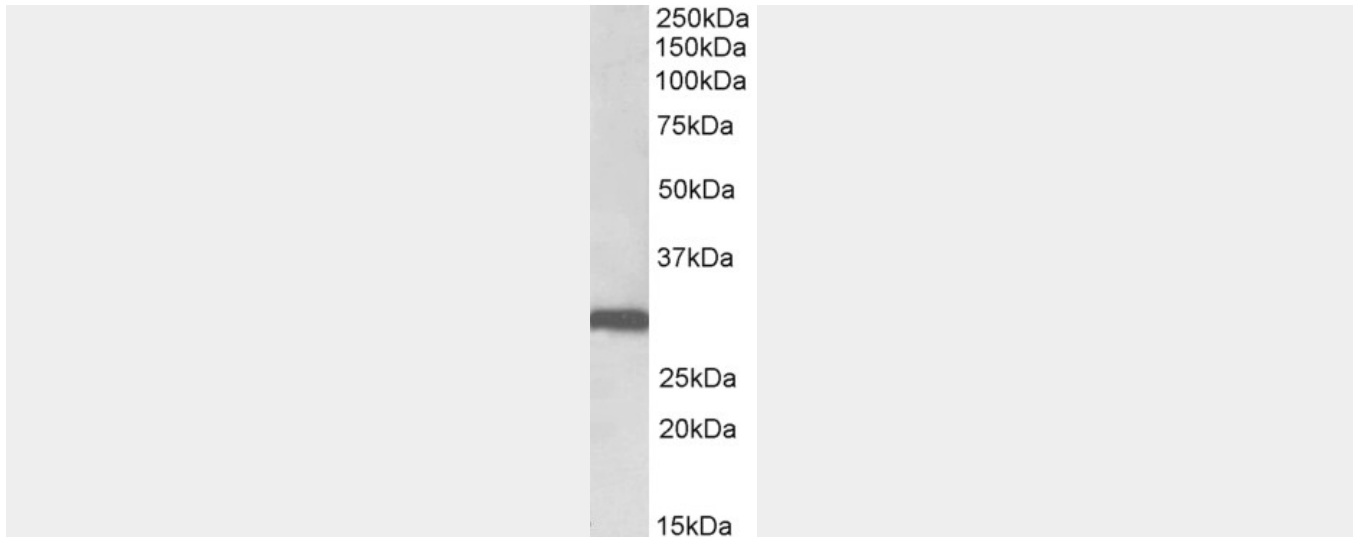
Stomatin Antibody (N-Term) - Protocols

Provided below are standard protocols that you may find useful for product applications.

- [Western Blot](#)
- [Blocking Peptides](#)
- [Dot Blot](#)
- [Immunohistochemistry](#)
- [Immunofluorescence](#)
- [Immunoprecipitation](#)
- [Flow Cytometry](#)
- [Cell Culture](#)

Stomatin Antibody (N-Term) - Images

AF3944a (5 µg/ml) staining of paraffin embedded Human Liver. Steamed antigen retrieval with citrate buffer pH 6, AP-staining.



AF3944a (0.1 µg/ml) staining of Human Lung lysate (35 µg protein in RIPA buffer). Primary incubation was 1 hour. Detected by chemiluminescence.

Stomatin Antibody (N-Term) - Background

This antibody is expected to recognize both reported isoforms (NP_004090.4; NP_937837.1).

Stomatin Antibody (N-Term) - References

Echinophilic proteins stomatin, sorcin, and synexin locate outside gangliosideM1 (GM1) patches in the erythrocyte membrane. Mrówczyńska L, Salzer U, Perutková S, Igli A, Hägerstrand H. *Biochem Biophys Res Commun.* 2010 Oct 22;401(3):396-400. PMID: 20858460