

**CEBPB (aa68-81) Antibody (internal region)**  
**Peptide-affinity purified goat antibody**  
**Catalog # AF3988a****Specification**

---

**CEBPB (aa68-81) Antibody (internal region) - Product Information**

Application	WB, E
Primary Accession	<a href="#">P17676</a>
Other Accession	<a href="#">NP_005185.2</a> , <a href="#">1051</a> , <a href="#">12608 (mouse)</a> , <a href="#">24253 (rat)</a>
Reactivity	Mouse
Predicted	Human, Rat, Pig, Dog
Host	Goat
Clonality	Polyclonal
Concentration	0.5 mg/ml
Isotype	IgG
Calculated MW	36106

**CEBPB (aa68-81) Antibody (internal region) - Additional Information****Gene ID** 1051**Other Names**

CCAAT/enhancer-binding protein beta, C/EBP beta, Liver activator protein, LAP, Liver-enriched inhibitory protein, LIP, Nuclear factor NF-IL6, Transcription factor 5, TCF-5, CEBPB, TCF5

**Dilution**

WB~~1:1000

E~~N/A

**Format**

0.5 mg/ml in Tris saline, 0.02% sodium azide, pH7.3 with 0.5% bovine serum albumin

**Storage**

Maintain refrigerated at 2-8°C for up to 6 months. For long term storage store at -20°C in small aliquots to prevent freeze-thaw cycles.

**Precautions**

CEBPB (aa68-81) Antibody (internal region) is for research use only and not for use in diagnostic or therapeutic procedures.

**CEBPB (aa68-81) Antibody (internal region) - Protein Information****Name** CEBPB ([HGNC:1834](#))**Synonyms** TCF5

### Function

Important transcription factor regulating the expression of genes involved in immune and inflammatory responses (PubMed:<a href="http://www.uniprot.org/citations/12048245" target="\_blank">12048245</a>, PubMed:<a href="http://www.uniprot.org/citations/1741402" target="\_blank">1741402</a>, PubMed:<a href="http://www.uniprot.org/citations/18647749" target="\_blank">18647749</a>, PubMed:<a href="http://www.uniprot.org/citations/9374525" target="\_blank">9374525</a>). Also plays a significant role in adipogenesis, as well as in the gluconeogenic pathway, liver regeneration, and hematopoiesis. The consensus recognition site is 5'-T[TG]NNGNAA[TG]-3'. Its functional capacity is governed by protein interactions and post-translational protein modifications. During early embryogenesis, plays essential and redundant roles with CEBPA. Has a promitotic effect on many cell types such as hepatocytes and adipocytes but has an antiproliferative effect on T-cells by repressing MYC expression, facilitating differentiation along the T-helper 2 lineage. Binds to regulatory regions of several acute-phase and cytokines genes and plays a role in the regulation of acute-phase reaction and inflammation. Also plays a role in intracellular bacteria killing (By similarity). During adipogenesis, is rapidly expressed and, after activation by phosphorylation, induces CEBPA and PPARG, which turn on the series of adipocyte genes that give rise to the adipocyte phenotype. The delayed transactivation of the CEBPA and PPARG genes by CEBPB appears necessary to allow mitotic clonal expansion and thereby progression of terminal differentiation (PubMed:<a href="http://www.uniprot.org/citations/20829347" target="\_blank">20829347</a>). Essential for female reproduction because of a critical role in ovarian follicle development (By similarity). Restricts osteoclastogenesis: together with NFE2L1; represses expression of DSPP during odontoblast differentiation (By similarity).

### Cellular Location

Nucleus. Cytoplasm. Note=Translocates to the nucleus when phosphorylated at Ser-288. In T-cells when sumoylated drawn to pericentric heterochromatin thereby allowing proliferation (By similarity). {ECO:0000250|UniProtKB:P28033, ECO:0000269|PubMed:9374525}

### Tissue Location

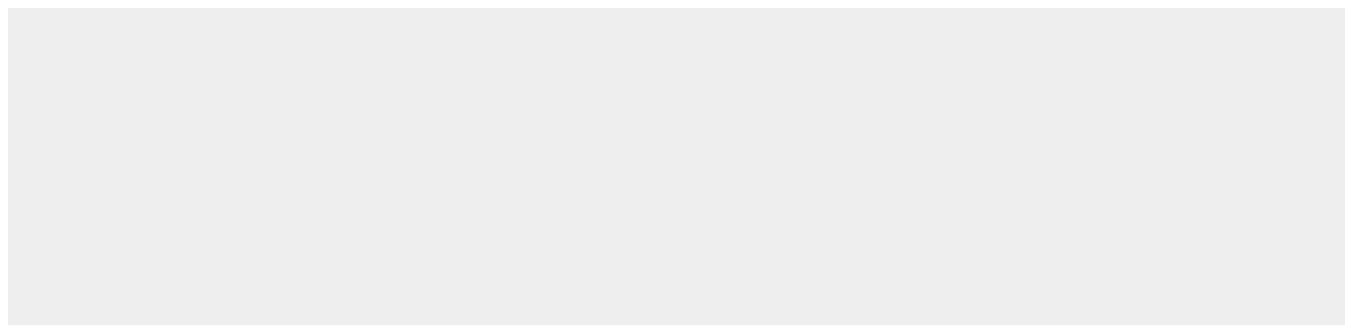
Expressed at low levels in the lung, kidney and spleen

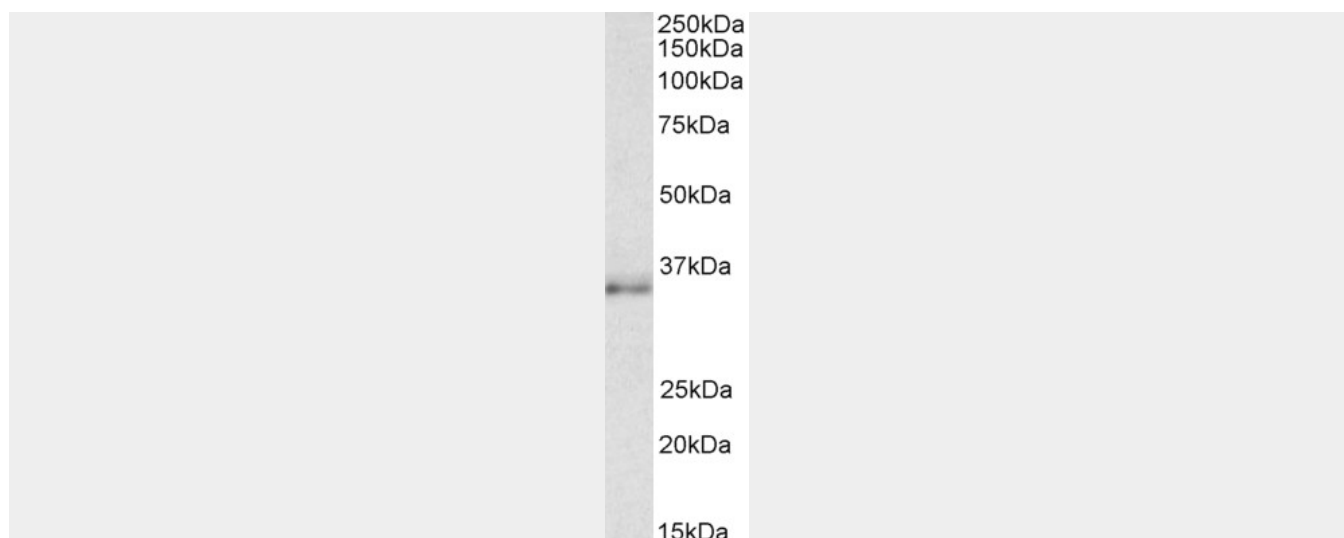
### CEBPB (aa68-81) Antibody (internal region) - Protocols

Provided below are standard protocols that you may find useful for product applications.

- [Western Blot](#)
- [Blocking Peptides](#)
- [Dot Blot](#)
- [Immunohistochemistry](#)
- [Immunofluorescence](#)
- [Immunoprecipitation](#)
- [Flow Cytometry](#)
- [Cell Culture](#)

### CEBPB (aa68-81) Antibody (internal region) - Images





AF3988a (1 µg/ml) staining of NIH3T3 lysate (35 µg protein in RIPA buffer). Primary incubation was 1 hour. Detected by chemiluminescence.

#### **CEBPB (aa68-81) Antibody (internal region) - References**

CCAAT/enhancer-binding proteins are key regulators of human type two deiodinase expression in a placenta cell line. Canettieri G, Santaguida MG, Antonucci L, Della Guardia M, Franchi A, Coni S, Gulino A, Centanni M. Endocrinology 2012 Aug 153 (8): 4030-8. PMID: 22689263