

**NPHS2 / SRN1 Antibody (C-Term)**  
Peptide-affinity purified goat antibody  
Catalog # AF3998a

**Specification**

---

**NPHS2 / SRN1 Antibody (C-Term) - Product Information**

Application	WB, Pep-ELISA
Primary Accession	<a href="#">O9NP85</a>
Other Accession	<a href="#">NP_055440.1</a> , <a href="#">7827</a>
Reactivity	Human, Mouse, Pig
Host	Goat
Clonality	Polyclonal
Concentration	0.5 mg/ml
Isotype	IgG
Calculated MW	42201

**NPHS2 / SRN1 Antibody (C-Term) - Additional Information**

**Gene ID** 7827

**Other Names**  
Podocin, NPHS2

**Dilution**  
WB~~1:1000  
Pep-ELISA~~N/A

**Format**  
0.5 mg/ml in Tris saline, 0.02% sodium azide, pH7.3 with 0.5% bovine serum albumin

**Storage**  
Maintain refrigerated at 2-8°C for up to 6 months. For long term storage store at -20°C in small aliquots to prevent freeze-thaw cycles.

**Precautions**  
NPHS2 / SRN1 Antibody (C-Term) is for research use only and not for use in diagnostic or therapeutic procedures.

**NPHS2 / SRN1 Antibody (C-Term) - Protein Information**

**Name** NPHS2

**Function**  
Plays a role in the regulation of glomerular permeability, acting probably as a linker between the plasma membrane and the cytoskeleton.

**Cellular Location**

[Isoform 1]: Cell membrane; Peripheral membrane protein

#### Tissue Location

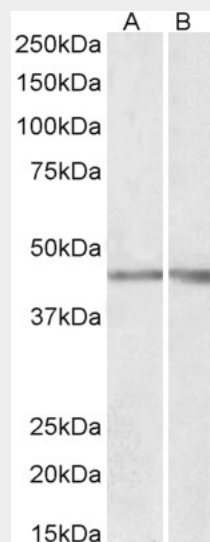
Almost exclusively expressed in the podocytes of fetal and mature kidney glomeruli

#### NPHS2 / SRN1 Antibody (C-Term) - Protocols

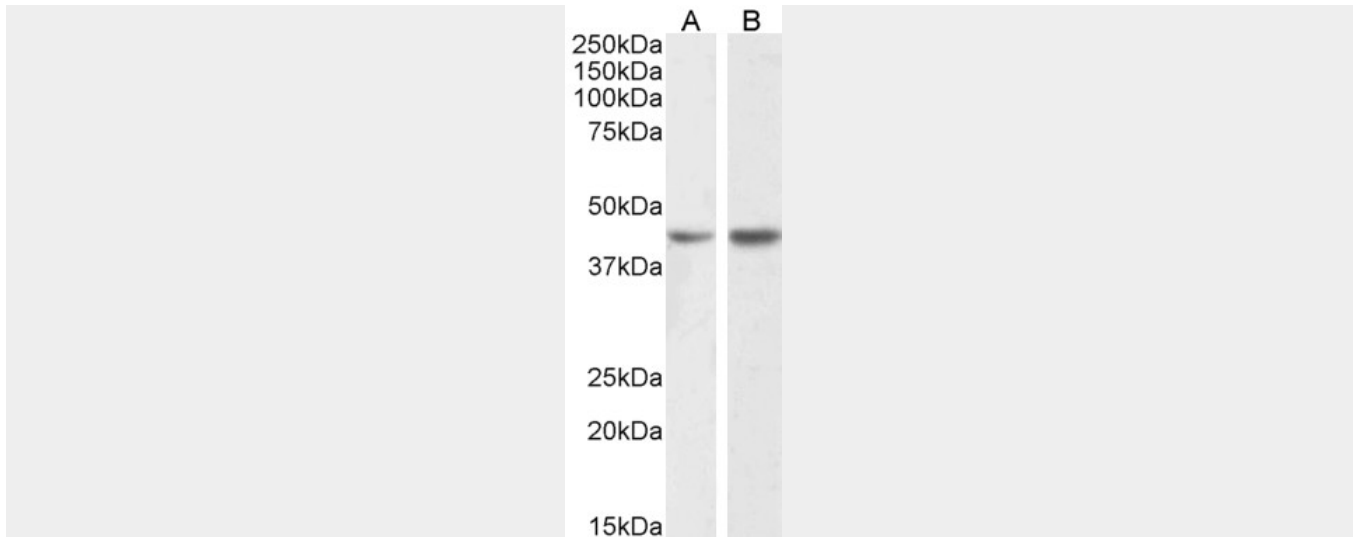
Provided below are standard protocols that you may find useful for product applications.

- [Western Blot](#)
- [Blocking Peptides](#)
- [Dot Blot](#)
- [Immunohistochemistry](#)
- [Immunofluorescence](#)
- [Immunoprecipitation](#)
- [Flow Cytometry](#)
- [Cell Culture](#)

#### NPHS2 / SRN1 Antibody (C-Term) - Images



AF3998a (0.3  $\mu\text{g}/\text{ml}$ ) staining of Human (A) and Mouse (B) Kidney lysates (35  $\mu\text{g}$  protein in RIPA buffer). Primary incubation was 1 hour. Detected by chemiluminescence.



EB12149 (1 $\mu$ g/ml) staining of Human (A) and Mouse (B) Kidney lysate (35 $\mu$ g protein in RIPA buffer). Detected by chemiluminescence.

#### **NPHS2 / SRN1 Antibody (C-Term) - References**

New perspectives on the renal slit diaphragm protein podocin. Relle M, Cash H, Brochhausen C, Strand D, Menke J, Galle PR, Schwarting A. Mod Pathol. 2011 Aug;24(8):1101-10. PMID: 21499232