

Cone-rod homeobox (C Terminus) Antibody (internal region, near C-Term)
Peptide-affinity purified goat antibody
Catalog # AF4011a

Specification

Cone-rod homeobox (C Terminus) Antibody (internal region, near C-Term) - Product Information

| | |
|-------------------|--|
| Application | WB, E |
| Primary Accession | O43186 |
| Other Accession | NP_000545.1 , 1406 , 12951 (mouse) , 60446 (rat) |
| Reactivity | Rat |
| Predicted | Human, Mouse, Pig |
| Host | Goat |
| Clonality | Polyclonal |
| Concentration | 0.5 mg/ml |
| Isotype | IgG |
| Calculated MW | 32261 |

Cone-rod homeobox (C Terminus) Antibody (internal region, near C-Term) - Additional Information

Gene ID 1406

Other Names

Cone-rod homeobox protein, CRX, CORD2

Dilution

WB~~1:1000

E~~N/A

Format

0.5 mg/ml in Tris saline, 0.02% sodium azide, pH7.3 with 0.5% bovine serum albumin

Storage

Maintain refrigerated at 2-8°C for up to 6 months. For long term storage store at -20°C in small aliquots to prevent freeze-thaw cycles.

Precautions

Cone-rod homeobox (C Terminus) Antibody (internal region, near C-Term) is for research use only and not for use in diagnostic or therapeutic procedures.

Cone-rod homeobox (C Terminus) Antibody (internal region, near C-Term) - Protein Information

Name CRX

Synonyms CORD2**Function**

Transcription factor that binds and transactivates the sequence 5'-TAATC[CA]-3' which is found upstream of several photoreceptor-specific genes, including the opsin genes. Acts synergistically with other transcription factors, such as NRL, RORB and RAX, to regulate photoreceptor cell-specific gene transcription. Essential for the maintenance of mammalian photoreceptors.

Cellular Location

Nucleus {ECO:0000255|PROSITE-ProRule:PRU00108}.

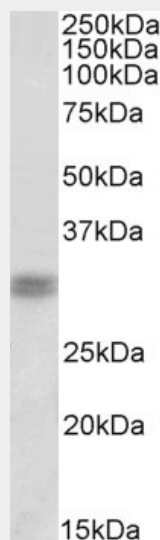
Tissue Location

Retina.

Cone-rod homeobox (C Terminus) Antibody (internal region, near C-Term) - Protocols

Provided below are standard protocols that you may find useful for product applications.

- [Western Blot](#)
- [Blocking Peptides](#)
- [Dot Blot](#)
- [Immunohistochemistry](#)
- [Immunofluorescence](#)
- [Immunoprecipitation](#)
- [Flow Cytometry](#)
- [Cell Culture](#)

Cone-rod homeobox (C Terminus) Antibody (internal region, near C-Term) - Images

AF4011a (1 µg/ml) staining of Rat Retina lysate (35 µg protein in RIPA buffer). Primary incubation was 1 hour. Detected by chemiluminescence.

Cone-rod homeobox (C Terminus) Antibody (internal region, near C-Term) - References

Immunohistochemical expression of CRX in extracranial malignant small round cell tumors. Terry J, Calicchio ML, Rodriguez-Galindo C, Perez-Atayde AR. The American journal of surgical pathology 2012 Aug 36 (8): 1165-9. PMID: 22790857