

HOXC6 (isoform 1) Antibody (internal region, near N-Term)
Peptide-affinity purified goat antibody
Catalog # AF4022a**Specification**

HOXC6 (isoform 1) Antibody (internal region, near N-Term) - Product Information

Application	WB, E
Primary Accession	P09630
Other Accession	NP_004494.1 , 3223 , 15425 (mouse) , 252885 (rat)
Reactivity	Human, Mouse, Rat
Predicted	Pig, Dog
Host	Goat
Clonality	Polyclonal
Concentration	0.5 mg/ml
Isotype	IgG
Calculated MW	26915

HOXC6 (isoform 1) Antibody (internal region, near N-Term) - Additional Information**Gene ID** 3223**Other Names**

Homeobox protein Hox-C6, Homeobox protein CP25, Homeobox protein HHO.C8, Homeobox protein Hox-3C, HOXC6, HOX3C

Dilution

WB~~1:1000

E~~N/A

Format

0.5 mg/ml in Tris saline, 0.02% sodium azide, pH7.3 with 0.5% bovine serum albumin

Storage

Maintain refrigerated at 2-8°C for up to 6 months. For long term storage store at -20°C in small aliquots to prevent freeze-thaw cycles.

Precautions

HOXC6 (isoform 1) Antibody (internal region, near N-Term) is for research use only and not for use in diagnostic or therapeutic procedures.

HOXC6 (isoform 1) Antibody (internal region, near N-Term) - Protein Information**Name** HOXC6**Synonyms** HOX3C

Function

Sequence-specific transcription factor which is part of a developmental regulatory system that provides cells with specific positional identities on the anterior-posterior axis.

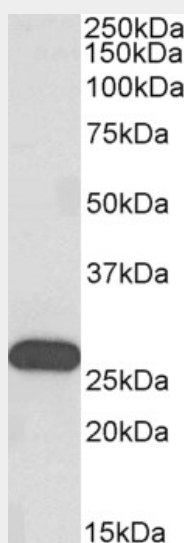
Cellular Location

Nucleus.

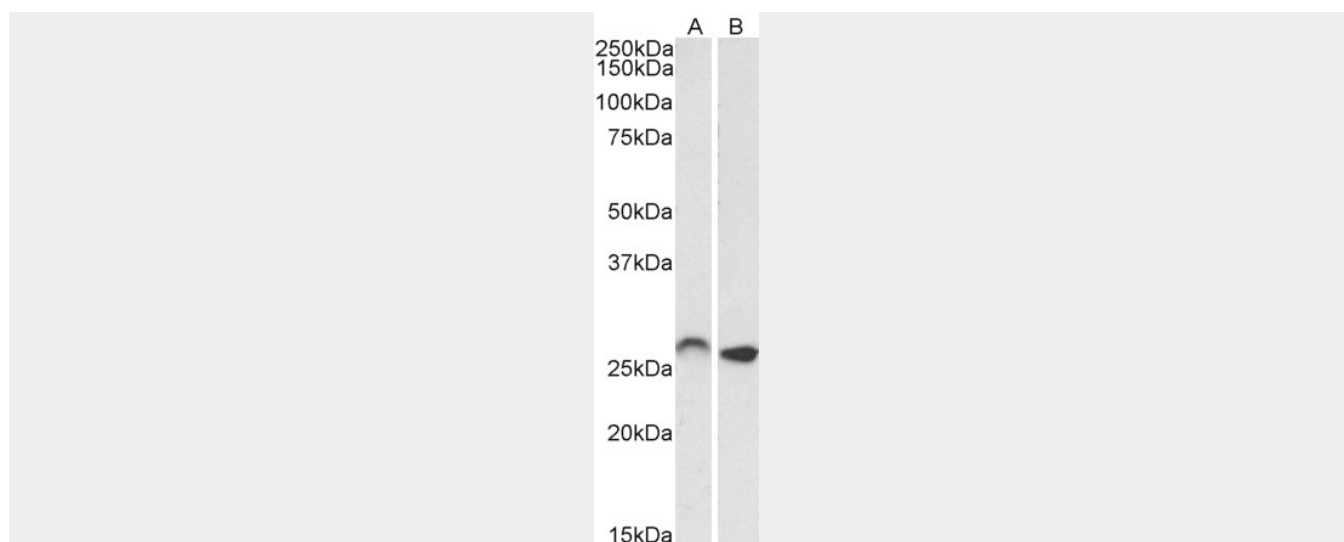
HOXC6 (isoform 1) Antibody (internal region, near N-Term) - Protocols

Provided below are standard protocols that you may find useful for product applications.

- [Western Blot](#)
- [Blocking Peptides](#)
- [Dot Blot](#)
- [Immunohistochemistry](#)
- [Immunofluorescence](#)
- [Immunoprecipitation](#)
- [Flow Cytometry](#)
- [Cell Culture](#)

HOXC6 (isoform 1) Antibody (internal region, near N-Term) - Images

AF4022a (0.3 µg/ml) staining of Human Olfactory bulb lysate (35 µg protein in RIPA buffer). Primary incubation was 1 hour. Detected by chemiluminescence.



AF4022a (0.01 µg/ml) staining of Mouse (A) and Rat (B) Brain lysates (35 µg protein in RIPA buffer). Primary incubation was 1 hour. Detected by chemiluminescence.

HOXC6 (isoform 1) Antibody (internal region, near N-Term) - Background

This antibody is expected to recognize isoform 1 (NP_004494.1) only.

HOXC6 (isoform 1) Antibody (internal region, near N-Term) - References

HOXC6 Is transcriptionally regulated via coordination of MLL histone methylase and estrogen receptor in an estrogen environment. Ansari KI, Hussain I, Shrestha B, Kasiri S, Mandal SS. J Mol Biol. 2011 Aug 12;411(2):334-49. PMID: 21683083