

**contactin 1 Antibody (internal region)**  
**Peptide-affinity purified goat antibody**  
**Catalog # AF4041a**

## Specification

---

### contactin 1 Antibody (internal region) - Product Information

Application	WB, E
Primary Accession	<a href="#">Q12860</a>
Other Accession	<a href="#">NP_001834.2</a> , <a href="#">NP_778203.1</a> , <a href="#">NP_001242992.1</a> , <a href="#">1272</a> , <a href="#">12805 (mouse)</a> , <a href="#">117258 (rat)</a>
Reactivity	Human, Mouse, Rat
Predicted	Pig
Host	Goat
Clonality	Polyclonal
Concentration	0.5 mg/ml
Isotype	IgG
Calculated MW	113320

### contactin 1 Antibody (internal region) - Additional Information

**Gene ID** 1272

#### Other Names

Contactin-1, Glycoprotein gp135, Neural cell surface protein F3, CNTN1

#### Dilution

WB~~1:1000

E~~N/A

#### Format

0.5 mg/ml in Tris saline, 0.02% sodium azide, pH7.3 with 0.5% bovine serum albumin

#### Storage

Maintain refrigerated at 2-8°C for up to 6 months. For long term storage store at -20°C in small aliquots to prevent freeze-thaw cycles.

#### Precautions

contactin 1 Antibody (internal region) is for research use only and not for use in diagnostic or therapeutic procedures.

### contactin 1 Antibody (internal region) - Protein Information

**Name** CNTN1

#### Function

Contactins mediate cell surface interactions during nervous system development. Involved in the formation of paranodal axo-glial junctions in myelinated peripheral nerves and in the signaling

between axons and myelinating glial cells via its association with CNTNAP1. Participates in oligodendrocytes generation by acting as a ligand of NOTCH1. Its association with NOTCH1 promotes NOTCH1 activation through the released notch intracellular domain (NICD) and subsequent translocation to the nucleus. Interaction with TNR induces a repulsion of neurons and an inhibition of neurite outgrowth (By similarity).

#### Cellular Location

[Isoform 1]: Cell membrane; Lipid-anchor, GPI- anchor; Extracellular side

#### Tissue Location

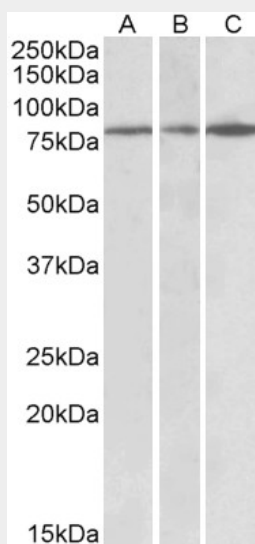
Strongly expressed in brain and in neuroblastoma and retinoblastoma cell lines. Lower levels of expression in lung, pancreas, kidney and skeletal muscle.

### contactin 1 Antibody (internal region) - Protocols

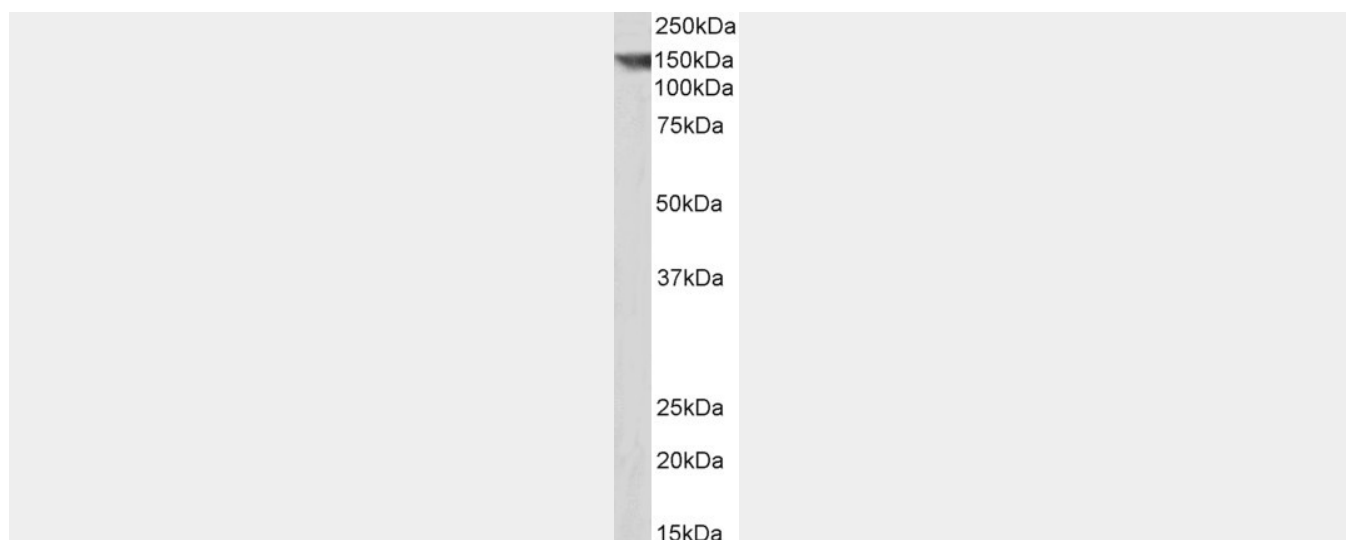
Provided below are standard protocols that you may find useful for product applications.

- [Western Blot](#)
- [Blocking Peptides](#)
- [Dot Blot](#)
- [Immunohistochemistry](#)
- [Immunofluorescence](#)
- [Immunoprecipitation](#)
- [Flow Cytometry](#)
- [Cell Culture](#)

### contactin 1 Antibody (internal region) - Images



AF4041a (0.3 µg/ml) staining of Human Cerebellum (A), Mouse Brain (B) and Rat Brain (C) lysates (35 µg protein in RIPA buffer). Primary incubation was 1 hour. Detected by chemiluminescence.



AF4041a (0.3 µg/ml) staining of Pig Brain lysate (35 µg protein in RIPA buffer). Primary incubation was 1 hour. Detected by chemiluminescence.

#### **contactin 1 Antibody (internal region) - Background**

This antibody is expected to recognize all reported isoforms (NP\_001834.2; NP\_778203.1; NP\_001242992.1). Reported variants represent identical protein: NP\_001242993.1, NP\_001242992.1.

#### **contactin 1 Antibody (internal region) - References**

A complex between contactin-1 and the protein tyrosine phosphatase PTPRZ controls the development of oligodendrocyte precursor cells. Lamprianou S, Chatzopoulou E, Thomas JL, Bouyain S, Harroch S. Proc Natl Acad Sci U S A. 2011 Oct 18;108(42):17498-503. PMID: 21969550