

**contactin 1 (aa585-870) Antibody (internal region)**  
**Peptide-affinity purified goat antibody**  
**Catalog # AF4042a****Specification**

---

**contactin 1 (aa585-870) Antibody (internal region) - Product Information**

Application	WB, IHC, E
Primary Accession	<a href="#">Q12860</a>
Other Accession	<a href="#">NP_001834.2</a> , <a href="#">NP_778203.1</a> , <a href="#">1272</a> , <a href="#">12805</a> (mouse), <a href="#">117258</a> (rat)
Reactivity	Human, Mouse, Rat
Predicted	Pig, Dog
Host	Goat
Clonality	Polyclonal
Concentration	0.5 mg/ml
Isotype	IgG
Calculated MW	113320

**contactin 1 (aa585-870) Antibody (internal region) - Additional Information****Gene ID** 1272**Other Names**

Contactin-1, Glycoprotein gp135, Neural cell surface protein F3, CNTN1

**Dilution**WB~~1:1000  
IHC~~1:100~500  
E~~N/A**Format**

0.5 mg/ml in Tris saline, 0.02% sodium azide, pH7.3 with 0.5% bovine serum albumin

**Storage**

Maintain refrigerated at 2-8°C for up to 6 months. For long term storage store at -20°C in small aliquots to prevent freeze-thaw cycles.

**Precautions**

contactin 1 (aa585-870) Antibody (internal region) is for research use only and not for use in diagnostic or therapeutic procedures.

**contactin 1 (aa585-870) Antibody (internal region) - Protein Information****Name** CNTN1**Function**

Contactins mediate cell surface interactions during nervous system development. Involved in the

formation of paranodal axo-glial junctions in myelinated peripheral nerves and in the signaling between axons and myelinating glial cells via its association with CNTNAP1. Participates in oligodendrocytes generation by acting as a ligand of NOTCH1. Its association with NOTCH1 promotes NOTCH1 activation through the released notch intracellular domain (NICD) and subsequent translocation to the nucleus. Interaction with TNR induces a repulsion of neurons and an inhibition of neurite outgrowth (By similarity).

**Cellular Location**

[Isoform 1]: Cell membrane; Lipid-anchor, GPI- anchor; Extracellular side

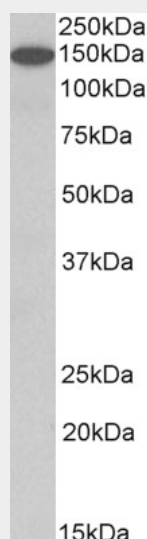
**Tissue Location**

Strongly expressed in brain and in neuroblastoma and retinoblastoma cell lines. Lower levels of expression in lung, pancreas, kidney and skeletal muscle.

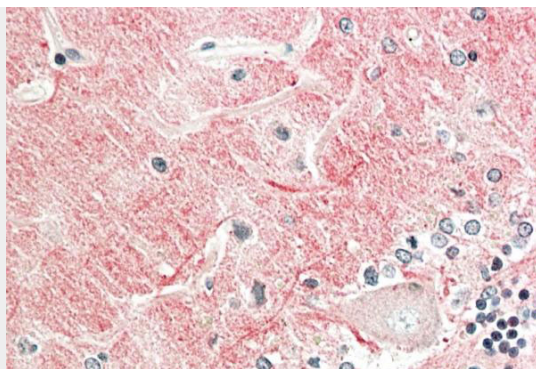
**contactin 1 (aa585-870) Antibody (internal region) - Protocols**

Provided below are standard protocols that you may find useful for product applications.

- [Western Blot](#)
- [Blocking Peptides](#)
- [Dot Blot](#)
- [Immunohistochemistry](#)
- [Immunofluorescence](#)
- [Immunoprecipitation](#)
- [Flow Cytometry](#)
- [Cell Culture](#)

**contactin 1 (aa585-870) Antibody (internal region) - Images**

AF4042a (1 µg/ml) staining of Human Cerebellum lysate (35 µg protein in RIPA buffer). Primary incubation was 1 hour. Detected by chemiluminescence.



AF4042a (5 µg/ml) staining of paraffin embedded Human Cerebellum. Steamed antigen retrieval with citrate buffer pH 6, AP-staining.

#### **contactin 1 (aa585-870) Antibody (internal region) - Background**

This antibody is expected to recognize isoform 1 (NP\_001834.2) and isoform 2 (NP\_778203.1).

#### **contactin 1 (aa585-870) Antibody (internal region) - References**

A complex between contactin-1 and the protein tyrosine phosphatase PTPRZ controls the development of oligodendrocyte precursor cells. Lamprianou S, Chatzopoulou E, Thomas JL, Bouyain S, Harroch S. Proc Natl Acad Sci U S A. 2011 Oct 18;108(42):17498-503. PMID: 21969550