

**cytokeratin 19 Antibody (C-Term)**  
**Peptide-affinity purified goat antibody**  
**Catalog # AF4071a****Specification**

---

**cytokeratin 19 Antibody (C-Term) - Product Information**

Application	WB, IHC, Pep-ELISA
Primary Accession	<a href="#">P08727</a>
Other Accession	<a href="#">NP_002267.2</a> , <a href="#">3880</a>
Reactivity	Human
Host	Goat
Clonality	Polyclonal
Concentration	0.5 mg/ml
Isotype	IgG
Calculated MW	44106

**cytokeratin 19 Antibody (C-Term) - Additional Information****Gene ID** 3880**Other Names**

Keratin, type I cytoskeletal 19, Cytokeratin-19, CK-19, Keratin-19, K19, KRT19

**Dilution**WB~~1:1000  
IHC~~1:100~500  
Pep-ELISA~~N/A**Format**

0.5 mg/ml in Tris saline, 0.02% sodium azide, pH7.3 with 0.5% bovine serum albumin

**Storage**

Maintain refrigerated at 2-8°C for up to 6 months. For long term storage store at -20°C in small aliquots to prevent freeze-thaw cycles.

**Precautions**

cytokeratin 19 Antibody (C-Term) is for research use only and not for use in diagnostic or therapeutic procedures.

**cytokeratin 19 Antibody (C-Term) - Protein Information****Name** KRT19**Function**

Involved in the organization of myofibers. Together with KRT8, helps to link the contractile apparatus to dystrophin at the costameres of striated muscle.

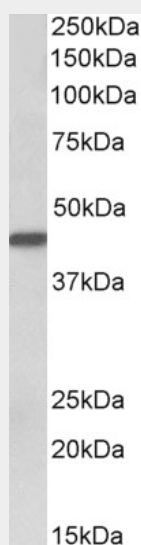
**Tissue Location**

Expressed in a defined zone of basal keratinocytes in the deep outer root sheath of hair follicles. Also observed in sweat gland and mammary gland ductal and secretory cells, bile ducts, gastrointestinal tract, bladder urothelium, oral epithelia, esophagus, ectocervical epithelium (at protein level). Expressed in epidermal basal cells, in nipple epidermis and a defined region of the hair follicle. Also seen in a subset of vascular wall cells in both the veins and artery of human umbilical cord, and in umbilical cord vascular smooth muscle. Observed in muscle fibers accumulating in the costameres of myoplasm at the sarcolemma in structures that contain dystrophin and spectrin.

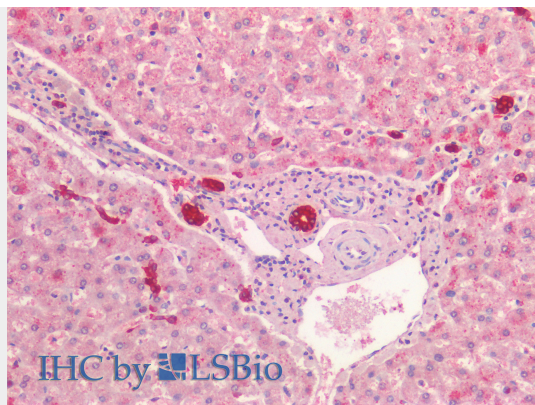
**cytokeratin 19 Antibody (C-Term) - Protocols**

Provided below are standard protocols that you may find useful for product applications.

- [Western Blot](#)
- [Blocking Peptides](#)
- [Dot Blot](#)
- [Immunohistochemistry](#)
- [Immunofluorescence](#)
- [Immunoprecipitation](#)
- [Flow Cytometry](#)
- [Cell Culture](#)

**cytokeratin 19 Antibody (C-Term) - Images**

E12359 (0.1µg/ml) staining of Human Breast cancer lysate (35µg protein in RIPA buffer). Detected by chemiluminescence.



AF4071a (5µg/ml) staining of paraffin embedded Human Liver. Steamed antigen retrieval with citrate buffer pH 6, AP-staining.

#### **cytokeratin 19 Antibody (C-Term) - References**

Full-length cytokeratin-19 is released by human tumor cells: a potential role in metastatic progression of breast cancer. Alix-Panabières C, Vendrell JP, Slijper M, Pellé O, Barbotte E, Mercier G, Jacot W, Fabbro M, Pantel K. Breast cancer research : BCR 2009 11 (3): R39. PMID: 19549321