

ALDOA Antibody (internal region, near N-Term)
Peptide-affinity purified goat antibody
Catalog # AF4084a**Specification**

ALDOA Antibody (internal region, near N-Term) - Product Information

Application	WB, E
Primary Accession	P04075
Other Accession	NP_000025.1 , NP_001230106.1 , 226 , 11674 (mouse), 24189 (rat)
Reactivity	Human, Mouse, Rat
Predicted	Dog
Host	Goat
Clonality	Polyclonal
Concentration	0.5 mg/ml
Isotype	IgG
Calculated MW	39420

ALDOA Antibody (internal region, near N-Term) - Additional Information**Gene ID** 226**Other Names**

Fructose-bisphosphate aldolase A, 4.1.2.13, Lung cancer antigen NY-LU-1, Muscle-type aldolase, ALDOA, ALDA

Dilution

WB~~1:1000

E~~N/A

Format

0.5 mg/ml in Tris saline, 0.02% sodium azide, pH7.3 with 0.5% bovine serum albumin

Storage

Maintain refrigerated at 2-8°C for up to 6 months. For long term storage store at -20°C in small aliquots to prevent freeze-thaw cycles.

Precautions

ALDOA Antibody (internal region, near N-Term) is for research use only and not for use in diagnostic or therapeutic procedures.

ALDOA Antibody (internal region, near N-Term) - Protein Information**Name** ALDOA ([HGNC:414](#))**Synonyms** ALDA

Function

Catalyzes the reversible conversion of beta-D-fructose 1,6- bisphosphate (FBP) into two triose phosphate and plays a key role in glycolysis and gluconeogenesis (PubMed:14766013). In addition, may also function as scaffolding protein (By similarity).

Cellular Location

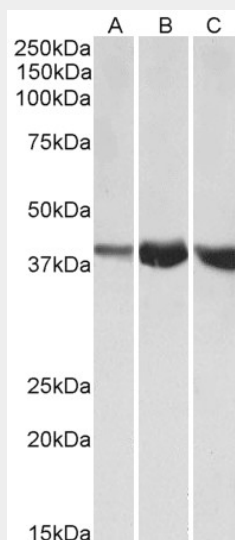
Cytoplasm, myofibril, sarcomere, I band {ECO:0000250|UniProtKB:P00883}. Cytoplasm, myofibril, sarcomere, M line {ECO:0000250|UniProtKB:P00883}. Note=In skeletal muscle, accumulates around the M line and within the I band, colocalizing with FBP2 on both sides of the Z line in the absence of Ca(2+) {ECO:0000250|UniProtKB:P00883}

ALDOA Antibody (internal region, near N-Term) - Protocols

Provided below are standard protocols that you may find useful for product applications.

- [Western Blot](#)
- [Blocking Peptides](#)
- [Dot Blot](#)
- [Immunohistochemistry](#)
- [Immunofluorescence](#)
- [Immunoprecipitation](#)
- [Flow Cytometry](#)
- [Cell Culture](#)

ALDOA Antibody (internal region, near N-Term) - Images



AF4084a (1 µg/ml) staining of Human (A), Mouse (B) and Rat (C) Skeletal Muscle lysates (35 µg protein in RIPA buffer). Primary incubation was 1 hour. Detected by chemiluminescence.

ALDOA Antibody (internal region, near N-Term) - Background

This antibody is expected to recognize both reported isoforms (P_000025.1; NP_001230106.1). Reported variants represent identical protein: NP_908930.1, NP_908932.1, NP_001121089.1, NP_000025.1.

ALDOA Antibody (internal region, near N-Term) - References

Human aldolase A natural mutants: relationship between flexibility of the C-terminal region and enzyme function. Esposito G, Vitagliano L, Costanzo P, Borrelli L, Barone R, Pavone L, Izzo P, Zagari A, Salvatore F. The Biochemical journal 2004 May 380 (Pt 1): 51-6. PMID: 14766013