

LDHB (aa15-25) Antibody (internal region, near N-Term)
Peptide-affinity purified goat antibody
Catalog # AF4087a**Specification**

LDHB (aa15-25) Antibody (internal region, near N-Term) - Product Information

Application	WB, E
Primary Accession	P07195
Other Accession	NP_002291.1 , 3945
Reactivity	Human
Host	Goat
Clonality	Polyclonal
Concentration	0.5 mg/ml
Isotype	IgG
Calculated MW	36638

LDHB (aa15-25) Antibody (internal region, near N-Term) - Additional Information**Gene ID** 3945**Other Names**

L-lactate dehydrogenase B chain, LDH-B, 1.1.1.27, LDH heart subunit, LDH-H, Renal carcinoma antigen NY-REN-46, LDHB

Dilution

WB~~1:1000

E~~N/A

Format

0.5 mg/ml in Tris saline, 0.02% sodium azide, pH7.3 with 0.5% bovine serum albumin

Storage

Maintain refrigerated at 2-8°C for up to 6 months. For long term storage store at -20°C in small aliquots to prevent freeze-thaw cycles.

Precautions

LDHB (aa15-25) Antibody (internal region, near N-Term) is for research use only and not for use in diagnostic or therapeutic procedures.

LDHB (aa15-25) Antibody (internal region, near N-Term) - Protein Information**Name** LDHB**Function**

Interconverts simultaneously and stereospecifically pyruvate and lactate with concomitant interconversion of NADH and NAD(+).

Cellular Location

Cytoplasm. Mitochondrion inner membrane; Peripheral membrane protein

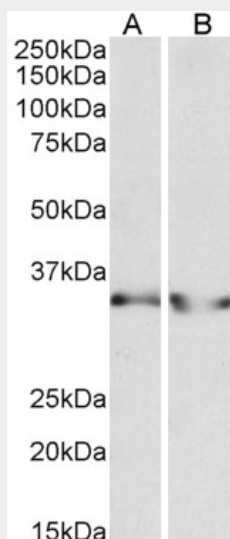
Tissue Location

Predominantly expressed in aerobic tissues such as cardiac muscle.

LDHB (aa15-25) Antibody (internal region, near N-Term) - Protocols

Provided below are standard protocols that you may find useful for product applications.

- [Western Blot](#)
- [Blocking Peptides](#)
- [Dot Blot](#)
- [Immunohistochemistry](#)
- [Immunofluorescence](#)
- [Immunoprecipitation](#)
- [Flow Cytometry](#)
- [Cell Culture](#)

LDHB (aa15-25) Antibody (internal region, near N-Term) - Images

AF4087a (0.3 µg/ml) staining of Human Heart (A) and Human Kidney (B) lysates (35 µg protein in RIPA buffer). Primary incubation was 1 hour. Detected by chemiluminescence.

LDHB (aa15-25) Antibody (internal region, near N-Term) - Background

Reported variants represent identical protein: NP_002291.1, NP_001167568.1.

LDHB (aa15-25) Antibody (internal region, near N-Term) - References

Decreased lactate dehydrogenase B expression enhances claudin 1-mediated hepatoma cell invasiveness via mitochondrial defects. Kim JH, Kim EL, Lee YK, Park CB, Kim BW, Wang HJ, Yoon CH, Lee SJ, Yoon G. Experimental cell research 2011 May 317 (8): 1108-18. PMID: 21356207