

CAPG (aa205-217) Antibody (internal region)
Peptide-affinity purified goat antibody
Catalog # AF4104a**Specification**

CAPG (aa205-217) Antibody (internal region) - Product Information

Application	WB, E
Primary Accession	P40121
Other Accession	NP_001738.2 , 822
Reactivity	Human, Mouse, Rat, Pig
Predicted	Dog
Host	Goat
Clonality	Polyclonal
Concentration	0.5 mg/ml
Isotype	IgG
Calculated MW	38499

CAPG (aa205-217) Antibody (internal region) - Additional Information**Gene ID** 822**Other Names**

Macrophage-capping protein, Actin regulatory protein CAP-G, CAPG, AFCP, MCP

Dilution

WB~~1:1000

E~~N/A

Format

0.5 mg/ml in Tris saline, 0.02% sodium azide, pH7.3 with 0.5% bovine serum albumin

Storage

Maintain refrigerated at 2-8°C for up to 6 months. For long term storage store at -20°C in small aliquots to prevent freeze-thaw cycles.

Precautions

CAPG (aa205-217) Antibody (internal region) is for research use only and not for use in diagnostic or therapeutic procedures.

CAPG (aa205-217) Antibody (internal region) - Protein Information**Name** CAPG**Synonyms** AFCP, MCP**Function**

Calcium-sensitive protein which reversibly blocks the barbed ends of actin filaments but does not

sever preformed actin filaments. May play an important role in macrophage function. May play a role in regulating cytoplasmic and/or nuclear structures through potential interactions with actin. May bind DNA.

Cellular Location

Nucleus. Cytoplasm Melanosome. Cell projection, lamellipodium {ECO:0000250|UniProtKB:P24452}. Cell projection, ruffle {ECO:0000250|UniProtKB:P24452}. Note=In macrophages, may be predominantly cytoplasmic. Nuclear localization was observed in fibroblasts. In macrophages, present at the membrane-cytoplasm interface. In activated macrophages, concentrated in the ruffles of the leading lamellipodia. {ECO:0000250|UniProtKB:P24452}

Tissue Location

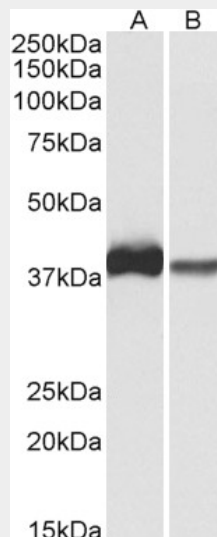
Macrophages and macrophage-like cells.

CAPG (aa205-217) Antibody (internal region) - Protocols

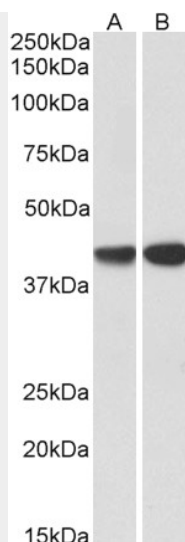
Provided below are standard protocols that you may find useful for product applications.

- [Western Blot](#)
- [Blocking Peptides](#)
- [Dot Blot](#)
- [Immunohistochemistry](#)
- [Immunofluorescence](#)
- [Immunoprecipitation](#)
- [Flow Cytometry](#)
- [Cell Culture](#)

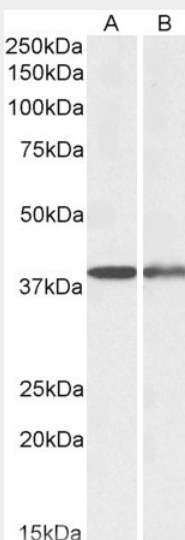
CAPG (aa205-217) Antibody (internal region) - Images



AF4104a (0.3 µg/ml) staining of U937 (A) and Human Spleen (B) lysates (35 µg protein in RIPA buffer). Primary incubation was 1 hour. Detected by chemiluminescence.



Anti-CAPG (0.3 µg/ml) staining of Periheral Blood Lymphocytes (AF4103a lane A), AF4104a lane B) lysates (35 µg protein in RIPA buffer). Primary incubation was 1 hour. Detected by chemiluminescence.



AF4104a (0.1 µg/ml) staining of Mouse (A) and Rat Spleen (B) lysates (35 µg protein in RIPA buffer). Primary incubation was 1 hour. Detected by chemiluminescence.

CAPG (aa205-217) Antibody (internal region) - Background

This antibody is expected to recognize isoform 1 (NP_001738.2) only. Reported variants represent identical protein: NP_001243068.1, NP_001738.2.

CAPG (aa205-217) Antibody (internal region) - References

The actin-capping protein CapG localizes to microtubule-dependent organelles during the cell cycle. Hubert T, Van Impe K, Vandekerckhove J, Gettemans J. Biochemical and biophysical research communications 2009 Feb 380 (1): 166-70. PMID: 19166812