

**EPCAM / TROP1 (aa167-179) Antibody (internal region)**  
**Peptide-affinity purified goat antibody**  
**Catalog # AF4121a****Specification**

---

**EPCAM / TROP1 (aa167-179) Antibody (internal region) - Product Information**

Application	WB, E
Primary Accession	<a href="#">P16422</a>
Other Accession	<a href="#">NP_002345.2</a> , <a href="#">4072</a>
Reactivity	Human
Host	Goat
Clonality	Polyclonal
Concentration	0.5 mg/ml
Isotype	IgG
Calculated MW	34932

**EPCAM / TROP1 (aa167-179) Antibody (internal region) - Additional Information****Gene ID** 4072**Other Names**

Epithelial cell adhesion molecule, Ep-CAM, Adenocarcinoma-associated antigen, Cell surface glycoprotein Trop-1, Epithelial cell surface antigen, Epithelial glycoprotein, EGP, Epithelial glycoprotein 314, EGP314, hEGP314, KS 1/4 antigen, KSA, Major gastrointestinal tumor-associated protein GA733-2, Tumor-associated calcium signal transducer 1, CD326, EPCAM, GA733-2, M1S2, M4S1, MIC18, TACSTD1, TROP1

**Dilution**

WB~~1:1000  
E~~N/A

**Format**

0.5 mg/ml in Tris saline, 0.02% sodium azide, pH7.3 with 0.5% bovine serum albumin

**Storage**

Maintain refrigerated at 2-8°C for up to 6 months. For long term storage store at -20°C in small aliquots to prevent freeze-thaw cycles.

**Precautions**

EPCAM / TROP1 (aa167-179) Antibody (internal region) is for research use only and not for use in diagnostic or therapeutic procedures.

**EPCAM / TROP1 (aa167-179) Antibody (internal region) - Protein Information****Name** EPCAM**Synonyms** GA733-2, M1S2, M4S1, MIC18, TACSTD1, TRO

**Function**

May act as a physical homophilic interaction molecule between intestinal epithelial cells (IECs) and intraepithelial lymphocytes (IELs) at the mucosal epithelium for providing immunological barrier as a first line of defense against mucosal infection. Plays a role in embryonic stem cells proliferation and differentiation. Up-regulates the expression of FABP5, MYC and cyclins A and E.

**Cellular Location**

Lateral cell membrane; Single-pass type I membrane protein. Cell junction, tight junction.  
Note=Colocalizes with CLDN7 at the lateral cell membrane and tight junction

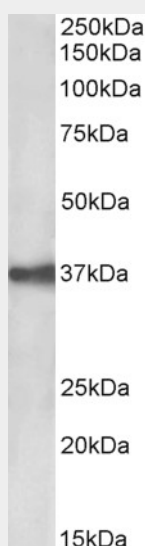
**Tissue Location**

Highly and selectively expressed by undifferentiated rather than differentiated embryonic stem cells (ESC) Levels rapidly diminish as soon as ESC's differentiate (at protein levels). Expressed in almost all epithelial cell membranes but not on mesodermal or neural cell membranes. Found on the surface of adenocarcinoma.

**EPCAM / TROP1 (aa167-179) Antibody (internal region) - Protocols**

Provided below are standard protocols that you may find useful for product applications.

- [Western Blot](#)
- [Blocking Peptides](#)
- [Dot Blot](#)
- [Immunohistochemistry](#)
- [Immunofluorescence](#)
- [Immunoprecipitation](#)
- [Flow Cytometry](#)
- [Cell Culture](#)

**EPCAM / TROP1 (aa167-179) Antibody (internal region) - Images**

AF4121a (0.03 µg/ml) staining of CACO-2 lysate (35 µg protein in RIPA buffer). Primary incubation was 1 hour. Detected by chemiluminescence.

**EPCAM / TROP1 (aa167-179) Antibody (internal region) - References**

Epithelial cell adhesion molecule (EpCAM) regulates claudin dynamics and tight junctions. Wu CJ,

Mannan P, Lu M, Udey MC. The Journal of biological chemistry 2013 Apr 288 (17): 12253-68. PMID: 23486470