

AMACR (aa312-326) Antibody (internal region)
Peptide-affinity purified goat antibody
Catalog # AF4125a

Specification

AMACR (aa312-326) Antibody (internal region) - Product Information

Application	WB, IHC, Pep-ELISA
Primary Accession	O9UHK6
Other Accession	NP_055139.4 , NP_001161067.1 , 23600
Reactivity	Human
Host	Goat
Clonality	Polyclonal
Concentration	0.5 mg/ml
Isotype	IgG
Calculated MW	42387

AMACR (aa312-326) Antibody (internal region) - Additional Information

Gene ID 23600

Other Names

Alpha-methylacyl-CoA racemase, 5.1.99.4, 2-methylacyl-CoA racemase, AMACR

Dilution

WB~~1:1000
IHC~~1:100~500
Pep-ELISA~~N/A

Format

0.5 mg/ml in Tris saline, 0.02% sodium azide, pH7.3 with 0.5% bovine serum albumin

Storage

Maintain refrigerated at 2-8°C for up to 6 months. For long term storage store at -20°C in small aliquots to prevent freeze-thaw cycles.

Precautions

AMACR (aa312-326) Antibody (internal region) is for research use only and not for use in diagnostic or therapeutic procedures.

AMACR (aa312-326) Antibody (internal region) - Protein Information

Name AMACR

Function

Catalyzes the interconversion of (R)- and (S)-stereoisomers of alpha-methyl-branched-chain fatty acyl-CoA esters (PubMed:10655068, PubMed:<a href="http://www.uniprot.org/citations/11060359"

target="_blank">11060359, PubMed:7649182). Acts only on coenzyme A thioesters, not on free fatty acids, and accepts as substrates a wide range of alpha-methylacyl-CoAs, including pristanoyl-CoA, trihydroxycoprostanoyl-CoA (an intermediate in bile acid synthesis), and arylpropionic acids like the anti-inflammatory drug ibuprofen (2- (4-isobutylphenyl)propionic acid) but neither 3-methyl-branched nor linear-chain acyl-CoAs (PubMed:10655068, PubMed:11060359, PubMed:7649182).

Cellular Location

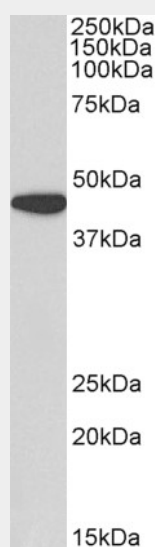
Peroxisome. Mitochondrion

AMACR (aa312-326) Antibody (internal region) - Protocols

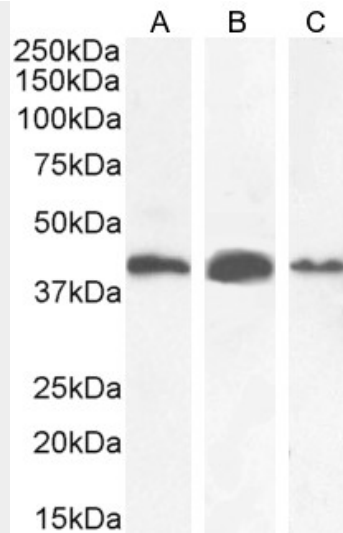
Provided below are standard protocols that you may find useful for product applications.

- [Western Blot](#)
- [Blocking Peptides](#)
- [Dot Blot](#)
- [Immunohistochemistry](#)
- [Immunofluorescence](#)
- [Immunoprecipitation](#)
- [Flow Cytometry](#)
- [Cell Culture](#)

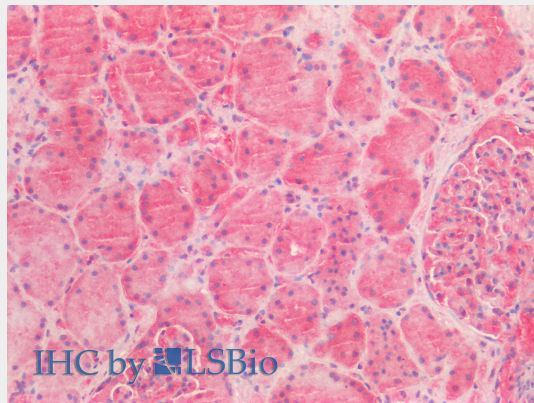
AMACR (aa312-326) Antibody (internal region) - Images



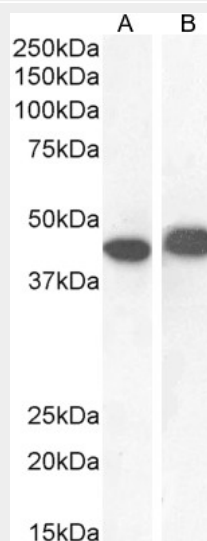
AF4125a (0.1 µg/ml) staining of Human Kidney lysate (35 µg protein in RIPA buffer). Primary incubation was 1 hour. Detected by chemiluminescence.



EB12538 (0.03 μ g/ml) staining of Human Kidney (A), (0.1 μ g/ml) Liver (B) and (1 μ g/ml) Colorectal cancer (C) lysate (35 μ g protein in RIPA buffer). Detected by chemiluminescence.



EB12539 (5 μ g/ml) staining of paraffin embedded Human Kidney. Steamed antigen retrieval with citrate buffer pH 6, AP-staining.



EB12539 (1 μ g/ml) staining of CaCo-2 (A) and (0.1 μ g/ml) LNCaP (B) cell lysate (35 μ g protein in RIPA buffer). Detected by chemiluminescence.

AMACR (aa312-326) Antibody (internal region) - Background

This antibody is expected to recognize isoform 1 (NP_055139.4) and isoform 3 (NP_001161067.1).

AMACR (aa312-326) Antibody (internal region) - References

High-throughput screen identifies novel inhibitors of cancer biomarker a-methylacyl coenzyme A racemase (AMACR/P504S). Wilson BA, Wang H, Nacev BA, Mease RC, Liu JO, Pomper MG, Isaacs WB. Molecular cancer therapeutics 2011 May 10 (5): 825-38. PMID: 21441411