

Goat Anti-fibrinogen gamma chain Antibody
Peptide-affinity Purified goat antibody
Catalog # AF4127a**Specification**

Goat Anti-fibrinogen gamma chain Antibody - Product Information

Application	WB, E
Primary Accession	P02679
Other Accession	NP_000500.2 , NP_068656.2 , 2266
Reactivity	Human
Host	Goat
Clonality	Polyclonal
Concentration	0.5 mg/ml
Isotype	IgG
Calculated MW	51512

Goat Anti-fibrinogen gamma chain Antibody - Additional Information**Gene ID** 2266**Other Names**

Fibrinogen gamma chain, FGG

Dilution

WB~~1:1000

E~~N/A

Format

0.5 mg/ml in Tris saline, 0.02% sodium azide, pH7.3 with 0.5% bovine serum albumin

Immunogen

Peptide with sequence C-QDIANKGAKQS, from the internal region of the protein sequence according to NP_000500.2; NP_068656.2. Please note the peptide is available for sale.

Storage

Maintain refrigerated at 2-8°C for up to 6 months. For long term storage store at -20°C in small aliquots to prevent freeze-thaw cycles.

Precautions

Goat Anti-fibrinogen gamma chain Antibody is for research use only and not for use in diagnostic or therapeutic procedures.

Goat Anti-fibrinogen gamma chain Antibody - Protein Information**Name** FGG**Function**

Together with fibrinogen alpha (FGA) and fibrinogen beta (FGB), polymerizes to form an insoluble fibrin matrix. Has a major function in hemostasis as one of the primary components of blood clots. In addition, functions during the early stages of wound repair to stabilize the lesion and guide cell migration during re-epithelialization. Was originally thought to be essential for platelet aggregation, based on in vitro studies using anticoagulated blood. However, subsequent studies have shown that it is not absolutely required for thrombus formation in vivo. Enhances expression of SELP in activated platelets via an ITGB3-dependent pathway. Maternal fibrinogen is essential for successful pregnancy. Fibrin deposition is also associated with infection, where it protects against IFNG-mediated hemorrhage. May also facilitate the antibacterial immune response via both innate and T-cell mediated pathways.

Cellular Location

Secreted

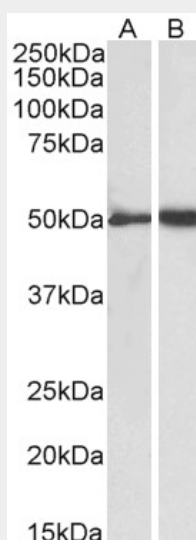
Tissue Location

Detected in blood plasma (at protein level).

Goat Anti-fibrinogen gamma chain Antibody - Protocols

Provided below are standard protocols that you may find useful for product applications.

- [Western Blot](#)
- [Blocking Peptides](#)
- [Dot Blot](#)
- [Immunohistochemistry](#)
- [Immunofluorescence](#)
- [Immunoprecipitation](#)
- [Flow Cytometry](#)
- [Cell Culture](#)

Goat Anti-fibrinogen gamma chain Antibody - Images

AF4127a (0.1 µg/ml) staining of Human Plasma (A) and Platelets (B) lysates (35 µg protein in RIPA buffer). Primary incubation was 1 hour. Detected by chemiluminescence.

Goat Anti-fibrinogen gamma chain Antibody - Background

This antibody is expected to recognize both reported isoforms (NP_000500.2; NP_068656.2).

Goat Anti-fibrinogen gamma chain Antibody - References

The pleiotropic role of the fibrinogen gamma' chain in hemostasis. Uitte de Willige S, Standeven KF, Philippou H, Ariëns RA. Blood 2009 Nov 114 (19): 3994-4001. PMID: 19687509