

**Goat Anti-CX3CL1 / fractalkine Antibody (internal region)**  
**Purified Goat Polyclonal Antibody**  
**Catalog # AF4160a**

**Specification**

---

**Goat Anti-CX3CL1 / fractalkine Antibody (internal region) - Product Information**

Application	WB, E
Primary Accession	<a href="#">P78423</a>
Other Accession	<a href="#">NP_002987.1</a>
Reactivity	Human
Predicted	Human
Host	Goat
Clonality	Polyclonal
Concentration	0.5
Calculated MW	42203

**Goat Anti-CX3CL1 / fractalkine Antibody (internal region) - Additional Information**

**Gene ID** 6376

**Other Names**

CX3CL1; chemokine (C-X3-C motif) ligand 1; ABCD-3; C3Xkine; CXC3; CXC3C; NTN; NTT; SCYD1; fractalkine; neurotactin; C-X3-C motif chemokine 1; CX3C membrane-anchored chemokine; fractalkine; small inducible cytokine subfamily D (Cys-X3-Cys), member 1 (fract

**Dilution**

WB~~1:1000  
E~~N/A

**Format**

Supplied at 0.5 mg/ml in Tris saline, 0.02% sodium azide, pH7.3 with 0.5% bovine serum albumin. Aliquot and store at -20°C. Minimize freezing and thawing.

**Immunogen**

Peptide with sequence C-KTSEAPSTQDPST, from the internal region of the protein sequence according to NP\_002987.1.

**Storage**

Maintain refrigerated at 2-8°C for up to 6 months. For long term storage store at -20°C in small aliquots to prevent freeze-thaw cycles.

**Precautions**

Goat Anti-CX3CL1 / fractalkine Antibody (internal region) is for research use only and not for use in diagnostic or therapeutic procedures.

**Goat Anti-CX3CL1 / fractalkine Antibody (internal region) - Protein Information**

**Name** CX3CL1 {ECO:0000303|PubMed:9024663}

### Function

Chemokine that acts as a ligand for both CX3CR1 and integrins ITGAV:ITGB3 and ITGA4:ITGB1 (PubMed:<a href="http://www.uniprot.org/citations/12055230" target="\_blank">12055230</a>, PubMed:<a href="http://www.uniprot.org/citations/21829356" target="\_blank">21829356</a>, PubMed:<a href="http://www.uniprot.org/citations/23125415" target="\_blank">23125415</a>, PubMed:<a href="http://www.uniprot.org/citations/9782118" target="\_blank">9782118</a>, PubMed:<a href="http://www.uniprot.org/citations/9931005" target="\_blank">9931005</a>). The CX3CR1-CX3CL1 signaling exerts distinct functions in different tissue compartments, such as immune response, inflammation, cell adhesion and chemotaxis (PubMed:<a href="http://www.uniprot.org/citations/12055230" target="\_blank">12055230</a>, PubMed:<a href="http://www.uniprot.org/citations/9024663" target="\_blank">9024663</a>, PubMed:<a href="http://www.uniprot.org/citations/9177350" target="\_blank">9177350</a>, PubMed:<a href="http://www.uniprot.org/citations/9782118" target="\_blank">9782118</a>). Regulates leukocyte adhesion and migration processes at the endothelium (PubMed:<a href="http://www.uniprot.org/citations/9024663" target="\_blank">9024663</a>, PubMed:<a href="http://www.uniprot.org/citations/9177350" target="\_blank">9177350</a>). Can activate integrins in both a CX3CR1-dependent and CX3CR1-independent manner (PubMed:<a href="http://www.uniprot.org/citations/23125415" target="\_blank">23125415</a>, PubMed:<a href="http://www.uniprot.org/citations/24789099" target="\_blank">24789099</a>). In the presence of CX3CR1, activates integrins by binding to the classical ligand-binding site (site 1) in integrins (PubMed:<a href="http://www.uniprot.org/citations/23125415" target="\_blank">23125415</a>, PubMed:<a href="http://www.uniprot.org/citations/24789099" target="\_blank">24789099</a>). In the absence of CX3CR1, binds to a second site (site 2) in integrins which is distinct from site 1 and enhances the binding of other integrin ligands to site 1 (PubMed:<a href="http://www.uniprot.org/citations/23125415" target="\_blank">23125415</a>, PubMed:<a href="http://www.uniprot.org/citations/24789099" target="\_blank">24789099</a>).

### Cellular Location

Cell membrane; Single-pass type I membrane protein

### Tissue Location

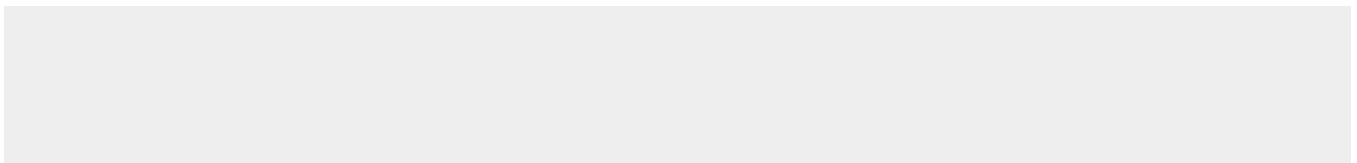
Expressed in the seminal plasma, endometrial fluid and follicular fluid (at protein level). Small intestine, colon, testis, prostate, heart, brain, lung, skeletal muscle, kidney and pancreas. Most abundant in the brain and heart

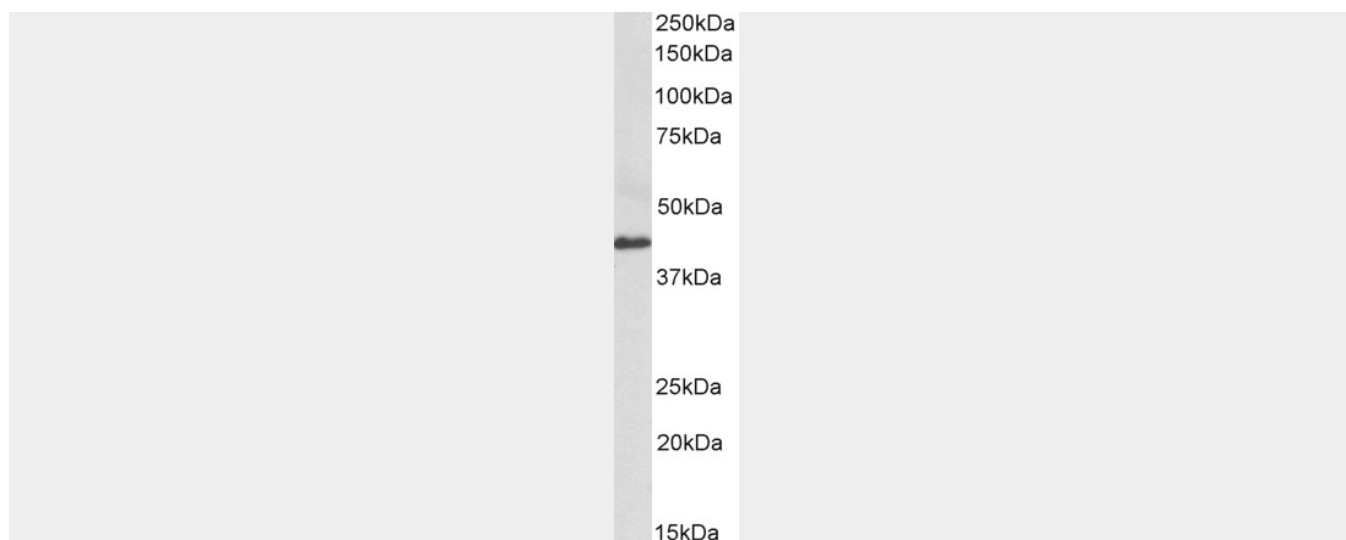
## Goat Anti-CX3CL1 / fractalkine Antibody (internal region) - Protocols

Provided below are standard protocols that you may find useful for product applications.

- [Western Blot](#)
- [Blocking Peptides](#)
- [Dot Blot](#)
- [Immunohistochemistry](#)
- [Immunofluorescence](#)
- [Immunoprecipitation](#)
- [Flow Cytometry](#)
- [Cell Culture](#)

## Goat Anti-CX3CL1 / fractalkine Antibody (internal region) - Images





AF4160a (0.3  $\mu\text{g/ml}$ ) staining of Human Colorectal cancer lysate (35  $\mu\text{g}$  protein in RIPA buffer). Primary incubation was 1 hour. Detected by chemiluminescence.

#### **Goat Anti-CX3CL1 / fractalkine Antibody (internal region) - References**

Functional adhesiveness of the CX3CL1 chemokine requires its aggregation. Role of the transmembrane domain. Hermand P, Pincet F, Carvalho S, Ansanay H, Trinquet E, Daoudi M, Combadière C, Deterre P. The Journal of biological chemistry 2008 Oct 283 (44): 30225-34.