

Goat Anti-CD27 Antibody (internal region)
Purified Goat Polyclonal Antibody
Catalog # AF4174a**Specification**

Goat Anti-CD27 Antibody (internal region) - Product Information

Application	WB, E
Primary Accession	P26842
Other Accession	NP_001233.1
Reactivity	Human
Predicted	Human
Host	Goat
Clonality	Polyclonal
Concentration	0.5
Calculated MW	29137

Goat Anti-CD27 Antibody (internal region) - Additional Information**Gene ID** 939**Other Names**

CD27; CD27 molecule; S152; S152. LPFS2; T14; TNFRSF7; Tp55; CD27 antigen; CD27L receptor; T cell activation antigen S152; T-cell activation antigen CD27; tumor necrosis factor receptor superfamily, member 7

Dilution

WB~~1:1000

E~~N/A

Format

Supplied at 0.5 mg/ml in Tris saline, 0.02% sodium azide, pH7.3 with 0.5% bovine serum albumin. Aliquot and store at -20°C. Minimize freezing and thawing.

Immunogen

Peptide with sequence C-QLADFRQLPARTLS, from the internal region of the protein sequence according to NP_001233.1.

Storage

Maintain refrigerated at 2-8°C for up to 6 months. For long term storage store at -20°C in small aliquots to prevent freeze-thaw cycles.

Precautions

Goat Anti-CD27 Antibody (internal region) is for research use only and not for use in diagnostic or therapeutic procedures.

Goat Anti-CD27 Antibody (internal region) - Protein Information

Name CD27 ([HGNC:11922](#))

Function

Costimulatory immune-checkpoint receptor expressed at the surface of T-cells, NK-cells and B-cells which binds to and is activated by its ligand CD70/CD27L expressed by B-cells (PubMed:28011863). The CD70-CD27 signaling pathway mediates antigen- specific T-cell activation and expansion which in turn provides immune surveillance of B-cells (PubMed:28011863). Mechanistically, CD70 ligation activates the TRAF2-PTPN6 axis that subsequently inhibits LCK phosphorylation to promote phenotypic and transcriptional adaptations of T-cell memory (PubMed:38354704). In addition, activation by CD70 on early progenitor cells provides a negative feedback signal to leukocyte differentiation during immune activation and thus modulates hematopoiesis (By similarity). Negatively regulates the function of Th2 lymphocytes in the adipose tissue (By similarity).

Cellular Location

Cell membrane; Single-pass type I membrane protein

Tissue Location

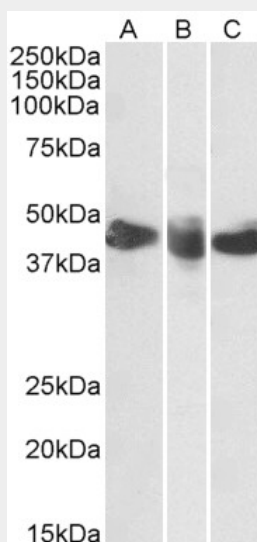
Found in most T-lymphocytes.

Goat Anti-CD27 Antibody (internal region) - Protocols

Provided below are standard protocols that you may find useful for product applications.

- [Western Blot](#)
- [Blocking Peptides](#)
- [Dot Blot](#)
- [Immunohistochemistry](#)
- [Immunofluorescence](#)
- [Immunoprecipitation](#)
- [Flow Cytometry](#)
- [Cell Culture](#)

Goat Anti-CD27 Antibody (internal region) - Images



AF4174a (0.3 µg/ml) staining of Human Spleen (A), Tonsil (B) and Thymus (C) lysates (35 µg protein in RIPA buffer). Primary incubation was 1 hour. Detected by chemiluminescence.

Goat Anti-CD27 Antibody (internal region) - References

Soluble CD27-pool in humans may contribute to T cell activation and tumor immunity. Huang J, Jochems C, Anderson AM, Talaie T, Jales A, Madan RA, Hodge JW, Tsang KY, Liewehr DJ, Steinberg SM, Gulley JL, Schlom J. Journal of immunology (Baltimore, Md. : 1950) 2013 Jun 190 (12): 6250-8.