

Goat Anti-SP140 Antibody (N-Terminus)
Purified Goat Polyclonal Antibody
Catalog # AF4177a**Specification**

Goat Anti-SP140 Antibody (N-Terminus) - Product Information

| | |
|-------------------|---|
| Application | WB, E |
| Primary Accession | Q13342 |
| Other Accession | NP_009168.4 , NP_001005176.1 , NP_001265380.1 , NP_001265381.1 , NP_001265382.1 |
| Reactivity | Human |
| Predicted | Human |
| Host | Goat |
| Clonality | Polyclonal |
| Concentration | 0.5 |
| Calculated MW | 98223 |

Goat Anti-SP140 Antibody (N-Terminus) - Additional Information**Gene ID** 11262**Other Names**

SP140; SP140 nuclear body protein; LYSP100; LYSP100-A; LYSP100-B; lymphoid-restricted homolog of Sp100; lymphoid-specific SP100 homolog; nuclear autoantigen Sp-140; nuclear body protein SP140; speckled 140 kDa

Dilution

WB~~1:1000
E~~N/A

Format

Supplied at 0.5 mg/ml in Tris saline, 0.02% sodium azide, pH7.3 with 0.5% bovine serum albumin. Aliquot and store at -20°C. Minimize freezing and thawing.

Immunogen

Peptide with sequence EGQNLQEVCPEP, from the N-Terminus of the protein sequence according to NP_009168.4; NP_001005176.1; NP_001265380.1; NP_001265381.1; NP_001265382.1.

Storage

Maintain refrigerated at 2-8°C for up to 6 months. For long term storage store at -20°C in small aliquots to prevent freeze-thaw cycles.

Precautions

Goat Anti-SP140 Antibody (N-Terminus) is for research use only and not for use in diagnostic or therapeutic procedures.

Goat Anti-SP140 Antibody (N-Terminus) - Protein Information

Name SP140 ([HGNC:17133](#))

Function

Component of the nuclear body, also known as nuclear domain 10, PML oncogenic domain, and KR body (PubMed:[8910577](http://www.uniprot.org/citations/8910577)). May be involved in the pathogenesis of acute promyelocytic leukemia and viral infection (PubMed:[8910577](http://www.uniprot.org/citations/8910577)). May play a role in chromatin-mediated regulation of gene expression although it does not bind to histone H3 tails (PubMed:[24267382](http://www.uniprot.org/citations/24267382)).

Cellular Location

Nucleus, Nucleus, PML body Cytoplasm. Note=Localized to nuclear structures termed LANDS, for LYSp100-associated nuclear domains. LANDS are globular, electron-dense structures most often found in the nucleoplasm, but also found at the nuclear membrane and in the cytoplasm, suggesting that these structures may traffic between the cytoplasm and the nucleus (PubMed:8695863). Also colocalizes with PML in a subset of PML nuclear bodies (PubMed:8910577)

Tissue Location

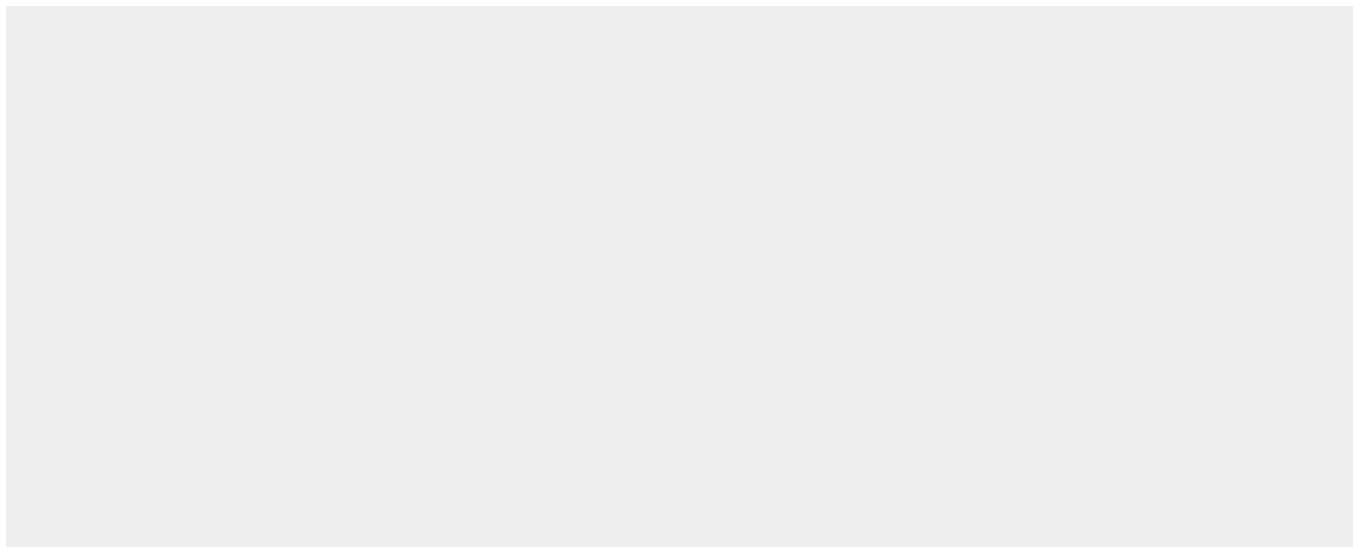
High levels in spleen and peripheral blood leukocytes, much lower levels in tonsils, thymus, prostate, ovary, small intestine, and colon (PubMed:8695863, PubMed:8910577). Very low levels in heart, brain, placenta, lung, liver, skeletal muscle, kidney, and pancreas (PubMed:8910577). Not detected in brain, liver and muscle (PubMed:8695863).

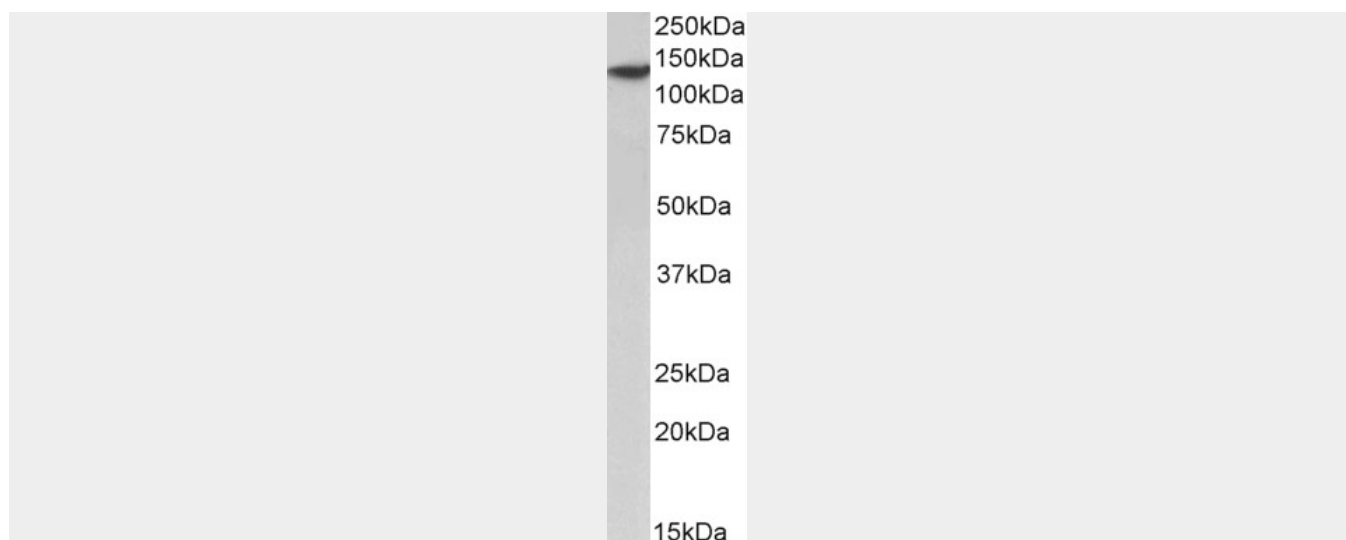
Goat Anti-SP140 Antibody (N-Terminus) - Protocols

Provided below are standard protocols that you may find useful for product applications.

- [Western Blot](#)
- [Blocking Peptides](#)
- [Dot Blot](#)
- [Immunohistochemistry](#)
- [Immunofluorescence](#)
- [Immunoprecipitation](#)
- [Flow Cytometry](#)
- [Cell Culture](#)

Goat Anti-SP140 Antibody (N-Terminus) - Images





AF4177a (2 µg/ml) staining of Human Spleen lysate (35 µg protein in RIPA buffer). Primary incubation was 1 hour. Detected by chemiluminescence.

Goat Anti-SP140 Antibody (N-Terminus) - References

Identification and characterization of a leukocyte-specific component of the nuclear body. Bloch DB, de la Monte SM, Guigaouri P, Filippov A, Bloch KD. The Journal of biological chemistry 1996 Nov 271 (46): 29198-204.