

Goat Anti-FRS2 Antibody (internal region)
Purified Goat Polyclonal Antibody
Catalog # AF4198a**Specification**

Goat Anti-FRS2 Antibody (internal region) - Product Information

Application	WB, E
Primary Accession	Q8WU20
Other Accession	327826(mouse) , NP_006645.3
Reactivity	Mouse
Predicted	Human, Mouse, Pig, Dog
Host	Goat
Clonality	Polyclonal
Concentration	0.5
Calculated MW	57029

Goat Anti-FRS2 Antibody (internal region) - Additional Information**Gene ID** 10818**Other Names**

FRS2; fibroblast growth factor receptor substrate 2; FRS2A; FRS2alpha; SNT; SNT-1; SNT1; FGFR signalling adaptor; FGFR substrate 2; FGFR-signaling adaptor SNT; suc1-associated neurotrophic factor target 1

Dilution

WB~~1:1000

E~~N/A

Format

Supplied at 0.5 mg/ml in Tris saline, 0.02% sodium azide, pH7.3 with 0.5% bovine serum albumin. Aliquot and store at -20°C. Minimize freezing and thawing.

Immunogen

Peptide with sequence C-SRDEDDNLGPKTPS, from the internal region of the protein sequence according to NP_006645.3.

Storage

Maintain refrigerated at 2-8°C for up to 6 months. For long term storage store at -20°C in small aliquots to prevent freeze-thaw cycles.

Precautions

Goat Anti-FRS2 Antibody (internal region) is for research use only and not for use in diagnostic or therapeutic procedures.

Goat Anti-FRS2 Antibody (internal region) - Protein Information

Name FRS2**Function**

Adapter protein that links activated FGR and NGF receptors to downstream signaling pathways. Plays an important role in the activation of MAP kinases and in the phosphorylation of PIK3R1, the regulatory subunit of phosphatidylinositol 3-kinase, in response to ligand-mediated activation of FGFR1. Modulates signaling via SHC1 by competing for a common binding site on NTRK1.

Cellular Location

Endomembrane system. Note=Cytoplasmic, membrane- bound

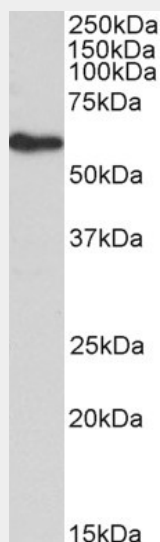
Tissue Location

Highly expressed in heart, brain, spleen, lung, liver, skeletal muscle, kidney and testis

Goat Anti-FRS2 Antibody (internal region) - Protocols

Provided below are standard protocols that you may find useful for product applications.

- [Western Blot](#)
- [Blocking Peptides](#)
- [Dot Blot](#)
- [Immunohistochemistry](#)
- [Immunofluorescence](#)
- [Immunoprecipitation](#)
- [Flow Cytometry](#)
- [Cell Culture](#)

Goat Anti-FRS2 Antibody (internal region) - Images

AF4198a (0.1 µg/ml) staining of 3T3-L1 lysate (35 µg protein in RIPA buffer). Primary incubation was 1 hour. Detected by chemiluminescence.

Goat Anti-FRS2 Antibody (internal region) - References

High-resolution genomic mapping reveals consistent amplification of the fibroblast growth factor receptor substrate 2 gene in well-differentiated and dedifferentiated liposarcoma. Wang X, Asmann YW, Erickson-Johnson MR, Oliveira JL, Zhang H, Moura RD, Lazar AJ, Lev D, Bill K, Lloyd RV,

Yaszemski MJ, Maran A, Oliveira AM. Genes, chromosomes & cancer 2011 Nov 50 (11): 849-58.