

Goat Anti-APOA1 Antibody (C Terminus)
Purified Goat Polyclonal Antibody
Catalog # AF4204a**Specification**

Goat Anti-APOA1 Antibody (C Terminus) - Product Information

Application	IHC, E
Primary Accession	P02647
Other Accession	NP_000030.1
Reactivity	Human
Predicted	Human
Host	Goat
Clonality	Polyclonal
Concentration	0.5
Calculated MW	30778

Goat Anti-APOA1 Antibody (C Terminus) - Additional Information**Gene ID** 335**Other Names**

APOA1; apolipoprotein A-I; MGC117399; amyloidosis; apolipoprotein A-I, preproprotein; apolipoprotein A1; preproapolipoprotein

Dilution

IHC~~1:100~500

E~~N/A

Format

Supplied at 0.5 mg/ml in Tris saline, 0.02% sodium azide, pH7.3 with 0.5% bovine serum albumin. Aliquot and store at -20°C. Minimize freezing and thawing.

Immunogen

Peptide with sequence C-SALEEYTKKLNTQ, from the C Terminus of the protein sequence according to NP_000030.1.

Storage

Maintain refrigerated at 2-8°C for up to 6 months. For long term storage store at -20°C in small aliquots to prevent freeze-thaw cycles.

Precautions

Goat Anti-APOA1 Antibody (C Terminus) is for research use only and not for use in diagnostic or therapeutic procedures.

Goat Anti-APOA1 Antibody (C Terminus) - Protein Information**Name** APOA1 ([HGNC:600](#))

Function

Participates in the reverse transport of cholesterol from tissues to the liver for excretion by promoting cholesterol efflux from tissues and by acting as a cofactor for the lecithin cholesterol acyltransferase (LCAT). As part of the SPAP complex, activates spermatozoa motility.

Cellular Location

Secreted.

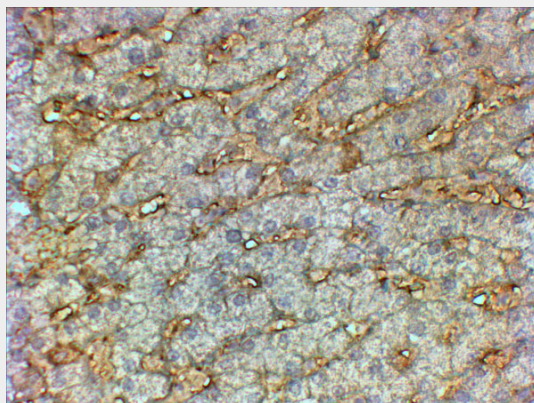
Tissue Location

Major protein of plasma HDL, also found in chylomicrons. Synthesized in the liver and small intestine. The oxidized form at Met-110 and Met-136 is increased in individuals with increased risk for coronary artery disease, such as in carrier of the eNOSa/b genotype and exposure to cigarette smoking. It is also present in increased levels in aortic lesions relative to native ApoA-I and increased levels are seen with increasing severity of disease

Goat Anti-APOA1 Antibody (C Terminus) - Protocols

Provided below are standard protocols that you may find useful for product applications.

- [Western Blot](#)
- [Blocking Peptides](#)
- [Dot Blot](#)
- [Immunohistochemistry](#)
- [Immunofluorescence](#)
- [Immunoprecipitation](#)
- [Flow Cytometry](#)
- [Cell Culture](#)

Goat Anti-APOA1 Antibody (C Terminus) - Images

AF4204a (2 µg/ml) staining of paraffin embedded Human Liver. Steamed antigen retrieval with citrate buffer pH 6, HRP-staining.

Goat Anti-APOA1 Antibody (C Terminus) - References

Human ApoA-I transfer attenuates transplant arteriosclerosis via enhanced incorporation of bone marrow-derived endothelial progenitor cells Feng Y, Jacobs F, Van Craeyveld E, Brunaud C, Snoeys J, Tjwa M, Van Linthout S, De Geest B Arterioscler Thromb Vasc Biol. 2008 Feb;28(2):278-83