

Goat Anti-FCRL2 Antibody (internal region)
Purified Goat Polyclonal Antibody
Catalog # AF4220a**Specification**

Goat Anti-FCRL2 Antibody (internal region) - Product Information

Application	WB
Primary Accession	O96LA5
Other Accession	NP_110391.2
Reactivity	Human
Predicted	Human
Host	Goat
Clonality	Polyclonal
Concentration	0.5
Calculated MW	55542

Goat Anti-FCRL2 Antibody (internal region) - Additional Information**Gene ID** 79368**Other Names**

FCRL2; Fc receptor-like 2; CD307b; FCRH2; IFGP4; IRTA4; SPAP1; SPAP1A; SPAP1B; SPAP1C; Fc receptor-like protein 2; IFGP family protein 4; SH2 domain containing phosphatase anchor protein 1; SH2 domain-containing phosphatase anchor protein 1; fc receptor h

Format

Supplied at 0.5 mg/ml in Tris saline, 0.02% sodium azide, pH7.3 with 0.5% bovine serum albumin. Aliquot and store at -20°C. Minimize freezing and thawing.

Immunogen

Peptide with sequence C-DKTSNIVKIKVQE, from the internal region of the protein sequence according to NP_110391.2.

Storage

Maintain refrigerated at 2-8°C for up to 6 months. For long term storage store at -20°C in small aliquots to prevent freeze-thaw cycles.

Precautions

Goat Anti-FCRL2 Antibody (internal region) is for research use only and not for use in diagnostic or therapeutic procedures.

Goat Anti-FCRL2 Antibody (internal region) - Protein Information**Name** FCRL2**Synonyms** FCRH2, IFGP4, IRTA4, SPAP1

Function

May have an regulatory role in normal and neoplastic B cell development.

Cellular Location

Cell membrane; Single-pass type I membrane protein

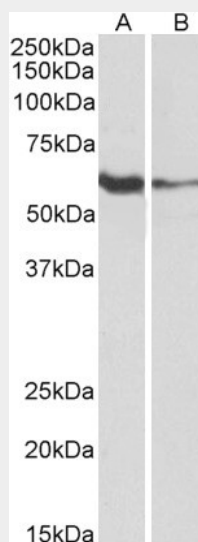
Tissue Location

Expressed in the secondary lymphoid organs, spleen and lymph node. Expression is limited to the mature B-cell lines Highly expressed in CD19 and within the mantle zones of the tonsil tissue. Isoform 2 is expressed in the spleen, peripheral blood and bone marrow. Isoform 2 and isoform 4 are expressed in B-cell lines Preferentially expressed in memory B-cells (at protein level)

Goat Anti-FCRL2 Antibody (internal region) - Protocols

Provided below are standard protocols that you may find useful for product applications.

- [Western Blot](#)
- [Blocking Peptides](#)
- [Dot Blot](#)
- [Immunohistochemistry](#)
- [Immunofluorescence](#)
- [Immunoprecipitation](#)
- [Flow Cytometry](#)
- [Cell Culture](#)

Goat Anti-FCRL2 Antibody (internal region) - Images

AF4220a (1 µg/ml) staining of Human Tonsil (A) and Daudi (B) lysates (35 µg protein in RIPA buffer). Primary incubation was 1 hour. Detected by chemiluminescence.

Goat Anti-FCRL2 Antibody (internal region) - References

FcR-like 2 Inhibition of B cell receptor-mediated activation of B cells. Jackson TA, Haga CL, Ehrhardt GR, Davis RS, Cooper MD. Journal of immunology (Baltimore, Md. : 1950) 2010 Dec 185 (12): 7405-12.