

Goat Anti-FCRL1 Antibody (internal region)
Purified Goat Polyclonal Antibody
Catalog # AF4226a**Specification**

Goat Anti-FCRL1 Antibody (internal region) - Product Information

Application	WB
Primary Accession	O96LA6
Other Accession	NP_443170.1 , NP_001152869.1 , NP_001152870.1
Reactivity	Human
Predicted	Human
Host	Goat
Clonality	Polyclonal
Concentration	0.5
Calculated MW	46936

Goat Anti-FCRL1 Antibody (internal region) - Additional Information**Gene ID** 115350**Other Names**

FCRL1; Fc receptor-like 1; CD307a; FCRH1; IFGP1; IRTA5; Fc receptor-like protein 1; IFGP family protein 1; fc receptor homolog 1; fcR-like protein 1; hIFGP1; immune receptor translocation-associated protein 5; immunoglobulin superfamily Fc receptor, gp42

Format

Supplied at 0.5 mg/ml in Tris saline, 0.02% sodium azide, pH7.3 with 0.5% bovine serum albumin. Aliquot and store at -20°C. Minimize freezing and thawing.

Immunogen

Peptide with sequence C-TAEYEIPSVRES D, from the internal region of the protein sequence according to NP_443170.1; NP_001152869.1; NP_001152870.1.

Storage

Maintain refrigerated at 2-8°C for up to 6 months. For long term storage store at -20°C in small aliquots to prevent freeze-thaw cycles.

Precautions

Goat Anti-FCRL1 Antibody (internal region) is for research use only and not for use in diagnostic or therapeutic procedures.

Goat Anti-FCRL1 Antibody (internal region) - Protein Information**Name** FCRL1**Synonyms** FCRH1, IFGP1, IRTA5

Function

May function as an activating coreceptor in B-cells. May function in B-cells activation and differentiation.

Cellular Location

Cell membrane; Single-pass type I membrane protein

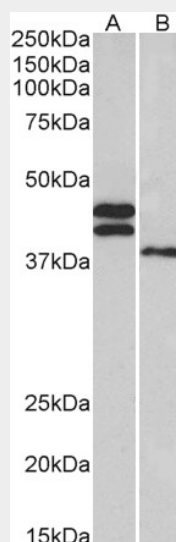
Tissue Location

Primarily expressed in secondary lymphoid tissues by mature subsets of B-cells. Detected in spleen, lymph node, heart, skeletal muscle, kidney, liver and placenta. Specifically expressed by mature B lineage cells with higher expression in naive versus memory B- cells (at protein level).

Goat Anti-FCRL1 Antibody (internal region) - Protocols

Provided below are standard protocols that you may find useful for product applications.

- [Western Blot](#)
- [Blocking Peptides](#)
- [Dot Blot](#)
- [Immunohistochemistry](#)
- [Immunofluorescence](#)
- [Immunoprecipitation](#)
- [Flow Cytometry](#)
- [Cell Culture](#)

Goat Anti-FCRL1 Antibody (internal region) - Images

AF4226a (0.3 µg/ml) staining of Human Heart (A) and Liver (B) lysates (35 µg protein in RIPA buffer). Primary incubation was 1 hour. Detected by chemiluminescence.

Goat Anti-FCRL1 Antibody (internal region) - References

FCRL1 on chronic lymphocytic leukemia, hairy cell leukemia, and B-cell non-Hodgkin lymphoma as a target of immunotoxins. Du X, Nagata S, Ise T, Stetler-Stevenson M, Pastan I. Blood 2008 Jan 111 (1): 338-43.