

Goat Anti-CD40 Antibody (internal region)
Purified Goat Polyclonal Antibody
Catalog # AF4246a**Specification**

Goat Anti-CD40 Antibody (internal region) - Product Information

Application	WB, E
Primary Accession	P25942
Other Accession	NP_001241.1
Reactivity	Human
Predicted	Human
Host	Goat
Clonality	Polyclonal
Concentration	0.5
Calculated MW	30619

Goat Anti-CD40 Antibody (internal region) - Additional Information**Gene ID** 958**Other Names**

CD40; CD40 molecule, TNF receptor superfamily member 5; Bp50; CDW40; MGC9013; TNFRSF5; p50; B cell surface antigen CD40; B cell-associated molecule; B-cell surface antigen CD40; CD40 antigen (TNF receptor superfamily member 5); CD40 type II isoform; CD40L

Dilution

WB~~1:1000

E~~N/A

Format

Supplied at 0.5 mg/ml in Tris saline, 0.02% sodium azide, pH7.3 with 0.5% bovine serum albumin. Aliquot and store at -20°C. Minimize freezing and thawing.

Immunogen

Peptide with sequence C-PQEINFPDDLPGSN, from the internal region of the protein sequence according to NP_001241.1.

Storage

Maintain refrigerated at 2-8°C for up to 6 months. For long term storage store at -20°C in small aliquots to prevent freeze-thaw cycles.

Precautions

Goat Anti-CD40 Antibody (internal region) is for research use only and not for use in diagnostic or therapeutic procedures.

Goat Anti-CD40 Antibody (internal region) - Protein Information

Name CD40

Synonyms TNFRSF5

Function

Receptor for TNFSF5/CD40LG (PubMed:31331973). Transduces TRAF6- and MAP3K8-mediated signals that activate ERK in macrophages and B cells, leading to induction of immunoglobulin secretion (By similarity).

Cellular Location

[Isoform I]: Cell membrane; Single-pass type I membrane protein

Tissue Location

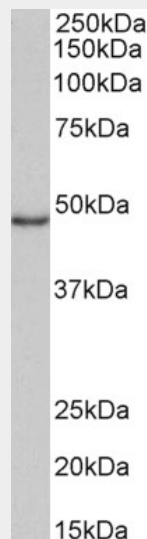
B-cells and in primary carcinomas.

Goat Anti-CD40 Antibody (internal region) - Protocols

Provided below are standard protocols that you may find useful for product applications.

- [Western Blot](#)
- [Blocking Peptides](#)
- [Dot Blot](#)
- [Immunohistochemistry](#)
- [Immunofluorescence](#)
- [Immunoprecipitation](#)
- [Flow Cytometry](#)
- [Cell Culture](#)

Goat Anti-CD40 Antibody (internal region) - Images



AF4246a (1 µg/ml) staining of Daudi lysate (35 µg protein in RIPA buffer). Primary incubation was 1 hour. Detected by chemiluminescence.

Goat Anti-CD40 Antibody (internal region) - References

A common SNP in the CD40 region is associated with systemic lupus erythematosus and correlates with altered CD40 expression: implications for the pathogenesis. Vazgiourakis VM, Zervou MI,

Choulaki C, Bertsias G, Melissourgaki M, Yilmaz N, Sidiropoulos P, Plant D, Trouw LA, Toes RE, Kardassis D, Yavuz S, Boumpas DT, Goulielmos GN. Ann Rheum Dis. 2011 Dec;70(12):2184-90.