

**Goat Anti-GNAI2 Antibody (internal region)**  
**Purified Goat Polyclonal Antibody**  
**Catalog # AF4248a****Specification**

---

**Goat Anti-GNAI2 Antibody (internal region) - Product Information**

|                   |   |
|-------------------|---|
| Application       | WB, E   |
| Primary Accession | <a href="#">P04899</a>  |
| Other Accession   | <a href="#">14678(mouse)</a> , <a href="#">81664(rat)</a> , <a href="#">NP_002061.1</a> ,<br><a href="#">NP_001159897.1</a> |
| Reactivity        | Human   |
| Predicted         | Human, Mouse, Rat, Pig  |
| Host              | Goat  |
| Clonality         | Polyclonal  |
| Concentration     | 0.5   |
| Calculated MW     | 40451   |

**Goat Anti-GNAI2 Antibody (internal region) - Additional Information****Gene ID** 2771**Other Names**

GNAI2; guanine nucleotide binding protein (G protein), alpha inhibiting activity polypeptide 2; GIP; GNAI2B; H\_LUCA15.1; H\_LUCA16.1; GTP-binding regulatory protein Gi alpha-2 chain; adenylate cyclase-inhibiting G alpha protein; guanine nucleotide-binding protein G(i) subunit alpha-2; guanine nucleotide-binding protein G(i), alpha-2 subunit

**Dilution**

WB~~1:1000  
E~~N/A

**Format**

Supplied at 0.5 mg/ml in Tris saline, 0.02% sodium azide, pH7.3 with 0.5% bovine serum albumin. Aliquot and store at -20°C. Minimize freezing and thawing.

**Immunogen**

Peptide with sequence C-PEYTGANKYDE, from the internal region of the protein sequence according to NP\_002061.1; NP\_001159897.1.

**Storage**

Maintain refrigerated at 2-8°C for up to 6 months. For long term storage store at -20°C in small aliquots to prevent freeze-thaw cycles.

**Precautions**

Goat Anti-GNAI2 Antibody (internal region) is for research use only and not for use in diagnostic or therapeutic procedures.

**Goat Anti-GNAI2 Antibody (internal region) - Protein Information**

**Name** GNAI2

**Synonyms** GNAI2B

**Function**

Guanine nucleotide-binding proteins (G proteins) are involved as modulators or transducers in various transmembrane signaling systems. The G(i) proteins are involved in hormonal regulation of adenylate cyclase: they inhibit the cyclase in response to beta- adrenergic stimuli. May play a role in cell division.

**Cellular Location**

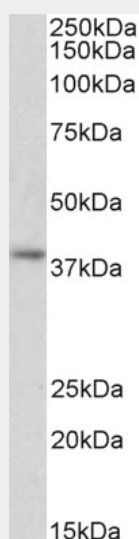
Cytoplasm. Cytoplasm, cytoskeleton, microtubule organizing center, centrosome. Cell membrane. Membrane; Lipid-anchor. Note=Localizes in the centrosomes of interphase and mitotic cells. Detected at the cleavage furrow and/or the midbody

**Goat Anti-GNAI2 Antibody (internal region) - Protocols**

Provided below are standard protocols that you may find useful for product applications.

- [Western Blot](#)
- [Blocking Peptides](#)
- [Dot Blot](#)
- [Immunohistochemistry](#)
- [Immunofluorescence](#)
- [Immunoprecipitation](#)
- [Flow Cytometry](#)
- [Cell Culture](#)

**Goat Anti-GNAI2 Antibody (internal region) - Images**



AF4248a (2 µg/ml) staining of Human Peripheral Blood Lymphocytes lysate (35 µg protein in RIPA buffer). Primary incubation was 1 hour. Detected by chemiluminescence.

**Goat Anti-GNAI2 Antibody (internal region) - References**

G alpha i2 and ZAP-70 mediate RasGRP1 membrane localization and activation of SDF-1-induced T

cell functions. Kremer KN, Kumar A, Hedin KE. J Immunol. 2011 Sep 15;187(6):3177-85.