

Goat Anti-TIAM1 Antibody
Peptide-affinity purified goat antibody
Catalog # AF4326a**Specification**

Goat Anti-TIAM1 Antibody - Product Information

Application	IF, FC
Primary Accession	Q13009
Other Accession	NP_003244 , NP_001340613.1 , NP_001340614.1 , NP_001340615.1 , NP_001340616.1
Reactivity	Human
Predicted	Human
Host	Goat
Clonality	Polyclonal
Concentration	100ug/200ul
Isotype	IgG
Calculated MW	177508

Goat Anti-TIAM1 Antibody - Additional Information**Gene ID** 7074**Other Names**

T-lymphoma invasion and metastasis-inducing protein 1, TIAM-1, TIAM1

Format

0.5 mg/ml in Tris saline, 0.02% sodium azide, pH7.3 with 0.5% bovine serum albumin.

Immunogen

Peptide with sequence C-EDFAPSRKLNTEI, from the C Terminus of the protein sequence according to NP_003244; NP_001340613.1; NP_001340614.1; NP_001340615.1; NP_001340616.1.

Storage

Maintain refrigerated at 2-8°C for up to 6 months. For long term storage store at -20°C in small aliquots to prevent freeze-thaw cycles.

Precautions

Goat Anti-TIAM1 Antibody is for research use only and not for use in diagnostic or therapeutic procedures.

Goat Anti-TIAM1 Antibody - Protein Information**Name** TIAM1 {ECO:0000303|PubMed:7731688, ECO:0000312|HGNC:HGNC:11805}**Function**

Guanyl-nucleotide exchange factor that activates RHO-like proteins and connects extracellular signals to cytoskeletal activities. Activates RAC1, CDC42, and to a lesser extent RHOA and their

downstream signaling to regulate processes like cell adhesion and cell migration.

Cellular Location

Cell junction. Cell membrane; Peripheral membrane protein; Cytoplasmic side. Note=Detected at the boundary between cells with actin-rich protrusions (By similarity). Presence of KRIT1, CDH5 and RAP1B is required for its localization to the cell junction

Tissue Location

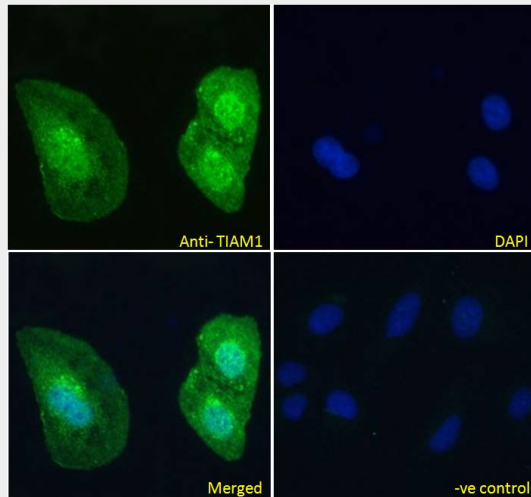
Found in virtually all analyzed tumor cell lines including B- and T-lymphomas, neuroblastomas, melanomas and carcinomas

Goat Anti-TIAM1 Antibody - Protocols

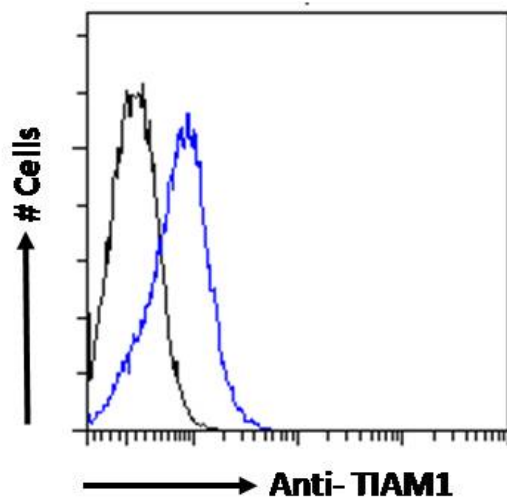
Provided below are standard protocols that you may find useful for product applications.

- [Western Blot](#)
- [Blocking Peptides](#)
- [Dot Blot](#)
- [Immunohistochemistry](#)
- [Immunofluorescence](#)
- [Immunoprecipitation](#)
- [Flow Cytometry](#)
- [Cell Culture](#)

Goat Anti-TIAM1 Antibody - Images



AF4326a Immunofluorescence analysis of paraformaldehyde fixed U2OS cells, permeabilized with 0.15% Triton. Primary incubation 1hr (10ug/ml) followed by Alexa Fluor 488 secondary antibody (4ug/ml), showing nuclear and cytoplasmic staining. The nuclear stain is DAPI (blue). Negative control: Unimmunized goat IgG (10ug/ml) followed by Alexa Fluor 488 secondary antibody (4ug/ml).



AF4326a Flow cytometric analysis of paraformaldehyde fixed Jurkat cells (blue line), permeabilized with 0.5% Triton. Primary incubation 1hr (10ug/ml) followed by Alexa Fluor 488 secondary antibody (0.4ug/ml). IgG control: Unimmunized goat IgG (black line) followed by Alexa Fluor 488 secondary antibody.