

**Goat Anti-IRF4 (aa393-407) Antibody**  
**Peptide-affinity purified goat antibody**  
**Catalog # AF4335a****Specification**

---

**Goat Anti-IRF4 (aa393-407) Antibody - Product Information**

|                   |  |
|-------------------|--|
| Application       | WB, IHC, FC, Pep-ELISA                                       |
| Primary Accession | <a href="#">Q15306</a>                                       |
| Other Accession   | <a href="#">NP_002451.2</a> , <a href="#">NP_001182215.1</a> |
| Reactivity        | Human, Rat   |
| Host              | Goat   |
| Clonality         | Polyclonal   |
| Calculated MW     | 51772  |

**Goat Anti-IRF4 (aa393-407) Antibody - Additional Information****Gene ID** 3662**Other Names**

interferon regulatory factor 4, LSIRF, multiple myeloma oncogene 1, MUM1, IRF4

**Dilution**WB~~1:1000  
IHC~~1:100~500  
FC~~1:10~50  
Pep-ELISA~~N/A**Format**

Supplied at 0.5 mg/ml in Tris saline, 0.02% sodium azide, pH7.3 with 0.5% bovine serum albumin.

**Immunogen**

Peptide with sequence C-DPQRQRKLITAHVEP, from the internal region (near C Terminus) of the protein sequence according to NP\_002451.2; NP\_001182215.1.

**Storage**

Maintain refrigerated at 2-8°C for up to 6 months. For long term storage store at -20°C in small aliquots to prevent freeze-thaw cycles.

**Precautions**

Goat Anti-IRF4 (aa393-407) Antibody is for research use only and not for use in diagnostic or therapeutic procedures.

**Goat Anti-IRF4 (aa393-407) Antibody - Protein Information****Name** IRF4 {ECO:0000303|PubMed:15489334, ECO:0000303|PubMed:8921401}**Function**

Transcriptional activator. Binds to the interferon-stimulated response element (ISRE) of the MHC class I promoter. Binds the immunoglobulin lambda light chain enhancer, together with PU.1. Probably plays a role in ISRE-targeted signal transduction mechanisms specific to lymphoid cells. Involved in CD8(+) dendritic cell differentiation by forming a complex with the BATF-JUNB heterodimer in immune cells, leading to recognition of AICE sequence (5'-TGAnTCA/GAAA- 3'), an immune-specific regulatory element, followed by cooperative binding of BATF and IRF4 and activation of genes.

**Cellular Location**

Nucleus. Cytoplasm

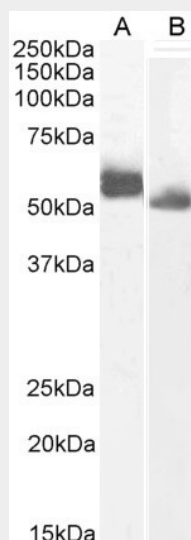
**Tissue Location**

Lymphoid cells.

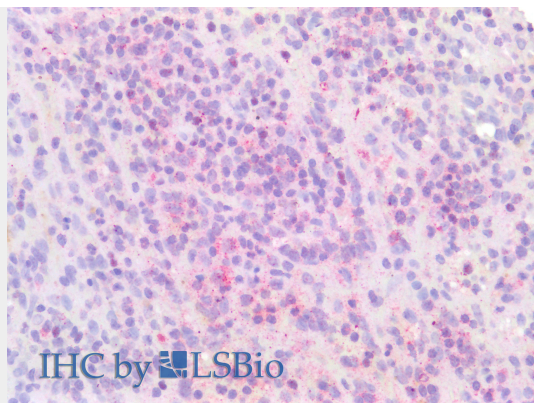
**Goat Anti-IRF4 (aa393-407) Antibody - Protocols**

Provided below are standard protocols that you may find useful for product applications.

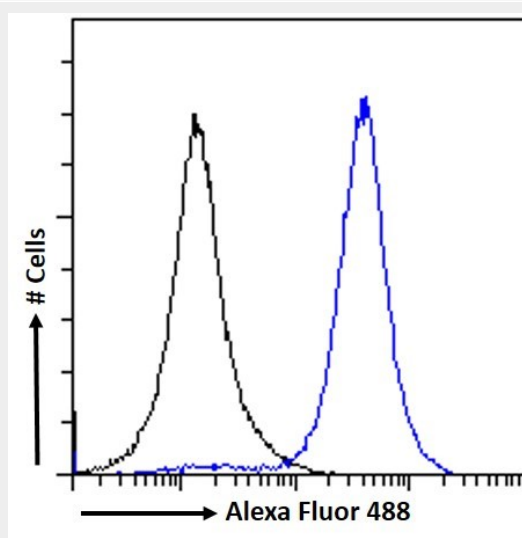
- [Western Blot](#)
- [Blocking Peptides](#)
- [Dot Blot](#)
- [Immunohistochemistry](#)
- [Immunofluorescence](#)
- [Immunoprecipitation](#)
- [Flow Cytometry](#)
- [Cell Culture](#)

**Goat Anti-IRF4 (aa393-407) Antibody - Images**

EB11331 (0.3µg/ml) staining of Human (A) and (0.1ug/ml) Rat (B) Spleen lysate (35µg protein in RIPA buffer).



EB11331 (5µg/ml) staining of paraffin embedded Human Spleen. Steamed antigen retrieval with citrate buffer pH 6, AP-staining.



EB11331 Flow cytometric analysis of paraformaldehyde fixed A431 cells (blue line), permeabilized with 0.5% Triton. Primary incubation 1hr (10ug/ml) followed by Alexa Fluor 488 secondary antibody (1ug/ml). IgG control: Unimmunized goat IgG (black line) fo