

Goat anti-Connective Tissue Growth Factor Antibody
Peptide-affinity purified goat antibody
Catalog # AF4496a**Specification**

Goat anti-Connective Tissue Growth Factor Antibody - Product Information

Application	IF, Pep-ELISA
Primary Accession	P29279
Other Accession	NP_001892
Reactivity	Human, Mouse, Rat, Dog
Host	Goat
Clonality	Polyclonal
Calculated MW	38091

Goat anti-Connective Tissue Growth Factor Antibody - Additional Information**Gene ID** 1490**Other Names**

CTGF; CCN2; NOV2; IGFBP8; connective tissue growth factor

Dilution

IF~~1:50~200

Pep-ELISA~~N/A

Format

Supplied at 0.5 mg/ml in Tris saline, 0.02% sodium azide, pH7.3 with 0.5% bovine serum albumin. Aliquot and store at -20°C. Minimize freezing and thawing.

Storage

Maintain refrigerated at 2-8°C for up to 6 months. For long term storage store at -20°C in small aliquots to prevent freeze-thaw cycles.

Precautions

Goat anti-Connective Tissue Growth Factor Antibody is for research use only and not for use in diagnostic or therapeutic procedures.

Goat anti-Connective Tissue Growth Factor Antibody - Protein Information**Name** CCN2 ([HGNC:2500](#))**Function**

Major connective tissue mitogen attractant secreted by vascular endothelial cells. Promotes proliferation and differentiation of chondrocytes. Is involved in the stimulation of osteoblast differentiation and has a critical role in osteogenesis (PubMed:39414788). Mediates heparin- and divalent cation-dependent cell adhesion in many cell types including fibroblasts,

myofibroblasts, endothelial and epithelial cells. Enhances fibroblast growth factor- induced DNA synthesis.

Cellular Location

Secreted, extracellular space, extracellular matrix {ECO:0000250|UniProtKB:P29268}. Secreted

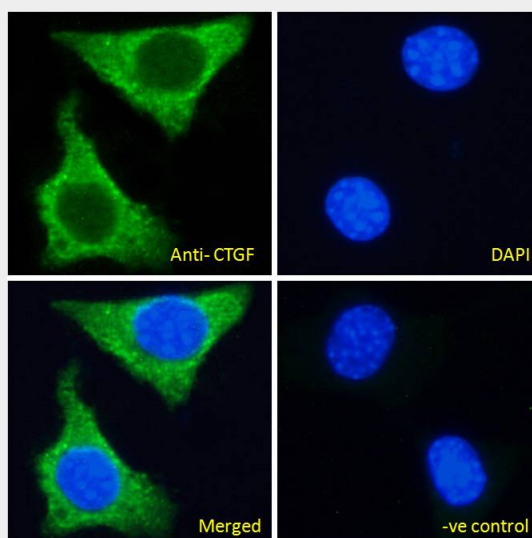
Tissue Location

Expressed in bone marrow and thymic cells. Also expressed one of two Wilms tumors tested.

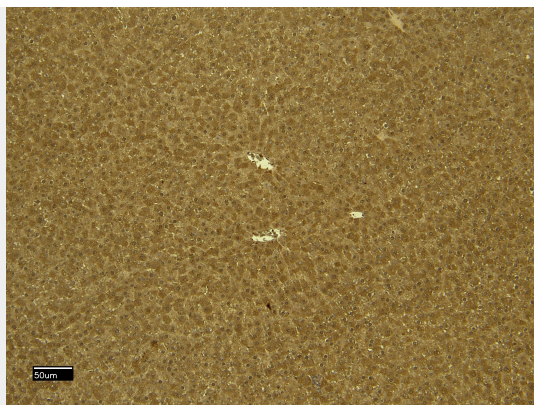
Goat anti-Connective Tissue Growth Factor Antibody - Protocols

Provided below are standard protocols that you may find useful for product applications.

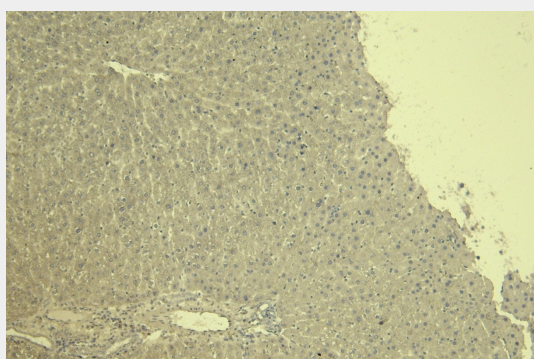
- [Western Blot](#)
- [Blocking Peptides](#)
- [Dot Blot](#)
- [Immunohistochemistry](#)
- [Immunofluorescence](#)
- [Immunoprecipitation](#)
- [Flow Cytometry](#)
- [Cell Culture](#)

Goat anti-Connective Tissue Growth Factor Antibody - Images

EB06683 Immunofluorescence analysis of paraformaldehyde fixed NIH3T3 cells, permeabilized with 0.15% Triton. Primary incubation 1hr (5ug/ml) followed by Alexa Fluor 488 secondary antibody (2ug/ml), showing cytoplasmic staining. The nuclear stain is DAPI (blue). Negative control: Unimmunized goat IgG (5ug/ml) followed by Alexa Fluor 488 secondary antibody (2ug/ml).



EB06683 (6µg/ml) staining of paraffin embedded Rat Liver. Heat induced antigen retrieval with citrate buffer pH 6, HRP-staining.



EB06683 Negative Control showing staining of paraffin embedded Rat Liver, with no primary antibody.