

**Goat anti-CTGF Antibody**  
**Peptide-affinity purified goat antibody**  
**Catalog # AF4501a****Specification**

---

**Goat anti-CTGF Antibody - Product Information**

Application	IF, FC, Pep-ELISA
Primary Accession	<a href="#">P29279</a>
Other Accession	<a href="#">NP_001892.1</a>
Reactivity	Human, Mouse, Rat, Pig, Dog, Bovine
Host	Goat
Clonality	Polyclonal
Calculated MW	38091

**Goat anti-CTGF Antibody - Additional Information****Gene ID** 1490**Other Names**

CTGF; connective tissue growth factor; CCN2; HCS24; IGFBP8; MGC102839; NOV2; CCN family member 2; IBP-8; IGF-binding protein 8; IGFBP-8; OTTHUMP00000017213; hypertrophic chondrocyte-specific protein 24; insulin-like growth factor-binding protein 8

**Dilution**

IF~~1:50~200  
FC~~1:10~50  
Pep-ELISA~~N/A

**Format**

Supplied at 0.5 mg/ml in Tris saline, 0.02% sodium azide, pH7.3 with 0.5% bovine serum albumin. Aliquot and store at -20°C. Minimize freezing and thawing.

**Immunogen**

Immunizing peptide overlaps disulphide bond

**Storage**

Maintain refrigerated at 2-8°C for up to 6 months. For long term storage store at -20°C in small aliquots to prevent freeze-thaw cycles.

**Precautions**

Goat anti-CTGF Antibody is for research use only and not for use in diagnostic or therapeutic procedures.

**Goat anti-CTGF Antibody - Protein Information****Name** CCN2 ([HGNC:2500](#))

**Function**

Major connective tissue mitogen secreted by vascular endothelial cells. Promotes proliferation and differentiation of chondrocytes. Is involved in the stimulation of osteoblast differentiation and has a critical role in osteogenesis (PubMed:<a href="http://www.uniprot.org/citations/39414788" target="\_blank">39414788</a>). Mediates heparin- and divalent cation-dependent cell adhesion in many cell types including fibroblasts, myofibroblasts, endothelial and epithelial cells. Enhances fibroblast growth factor- induced DNA synthesis.

**Cellular Location**

Secreted, extracellular space, extracellular matrix {ECO:0000250|UniProtKB:P29268}. Secreted

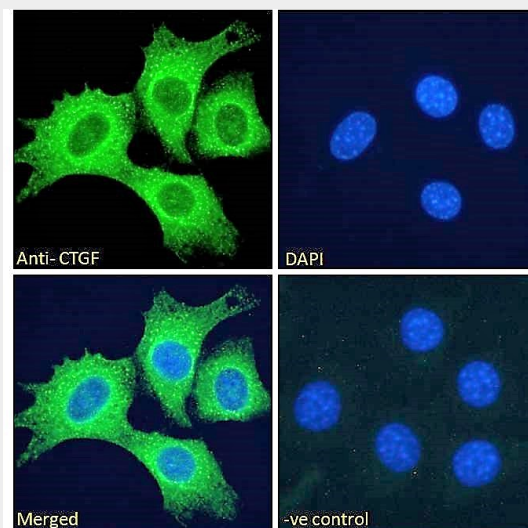
**Tissue Location**

Expressed in bone marrow and thymic cells. Also expressed one of two Wilms tumors tested.

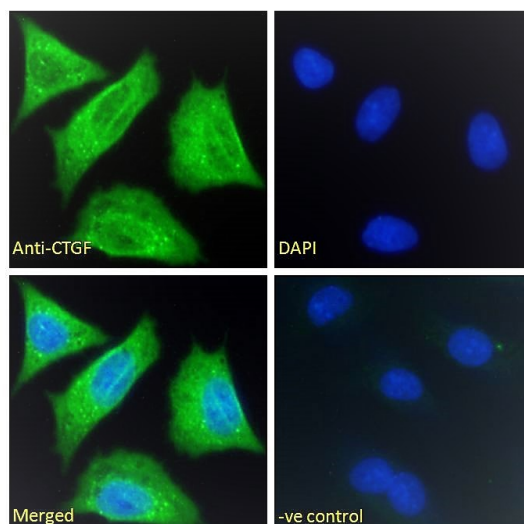
**Goat anti-CTGF Antibody - Protocols**

Provided below are standard protocols that you may find useful for product applications.

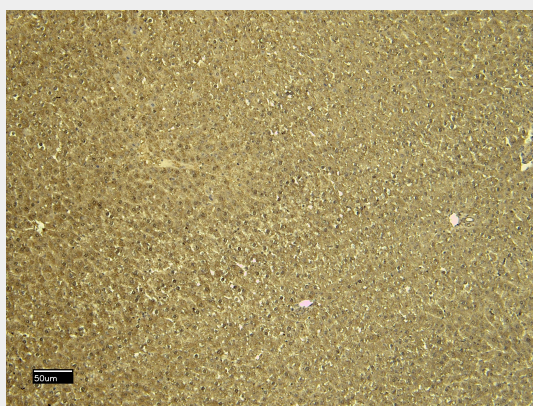
- [Western Blot](#)
- [Blocking Peptides](#)
- [Dot Blot](#)
- [Immunohistochemistry](#)
- [Immunofluorescence](#)
- [Immunoprecipitation](#)
- [Flow Cytometry](#)
- [Cell Culture](#)

**Goat anti-CTGF Antibody - Images**

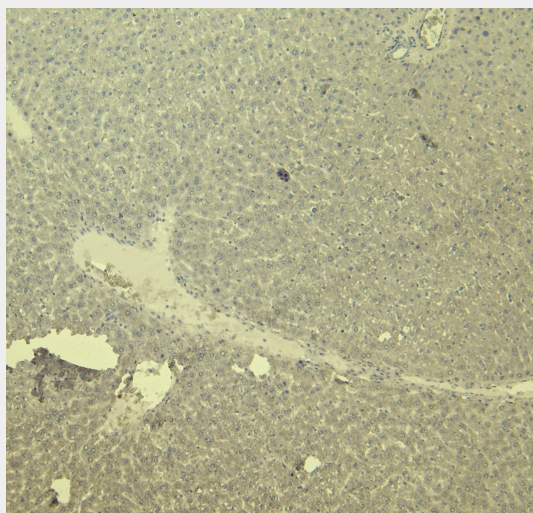
EB11760 Immunofluorescence analysis of paraformaldehyde fixed NIH3T3 cells, permeabilized with 0.15% Triton. Primary incubation 1hr (10ug/ml) followed by Alexa Fluor 488 secondary antibody (2ug/ml), showing cytoplasmic/membrane staining. The nuclear stain is DAPI (blue). Negative control: Unimmunized goat IgG (10ug/ml) followed by Alexa Fluor 488 secondary antibody (2ug/ml).



EB11760 Immunofluorescence analysis of paraformaldehyde fixed HepG2 cells, permeabilized with 0.15% Triton. Primary incubation 1hr (10ug/ml) followed by Alexa Fluor 488 secondary antibody (2ug/ml), showing cytoplasmic/membrane staining. The nuclear stain is DAPI (blue). Negative control: Unimmunized goat IgG (10ug/ml) followed by Alexa Fluor 488 secondary antibody (2ug/ml).



EB11760 (6µg/ml) staining of paraffin embedded Rat Liver. Heat induced antigen retrieval with citrate buffer pH 6, HRP-staining.



EB11760 Negative Control showing staining of paraffin embedded Rat Liver, with no primary

antibody.