

KD-Validated Anti-Kinesin family member 11 Rabbit Monoclonal Antibody
Rabbit monoclonal antibody
Catalog # AGI1001**Specification**

KD-Validated Anti-Kinesin family member 11 Rabbit Monoclonal Antibody - Product Information

Application	WB, FC, ICC
Primary Accession	P52732
Reactivity	Human
Clonality	Monoclonal
Isotype	Rabbit IgG
Calculated MW	Predicted, 119 kDa, observed, 119 kDa
Gene Name	KIF11
Aliases	KIF11; Kinesin Family Member 11; TRIP5; KNSL1; HKSP; EG5; Thyroid Receptor-Interacting Protein 5; Kinesin-Like Spindle Protein HKSP; Kinesin-Related Motor Protein Eg5; Kinesin-Like Protein KIF11; TR-Interacting Protein 5; Kinesin-Like Protein 1; TRIP-5; Kinesin-Like 1; MCLMR; Eg5
Immunogen	A synthesized peptide derived from human Eg5

KD-Validated Anti-Kinesin family member 11 Rabbit Monoclonal Antibody - Additional InformationGene ID **3832****Other Names**

Kinesin-like protein KIF11, Kinesin-like protein 1, Kinesin-like spindle protein HKSP, Kinesin-related motor protein Eg5, Thyroid receptor-interacting protein 5, TR-interacting protein 5, TRIP-5, KIF11, EG5, KNSL1, TRIP5

KD-Validated Anti-Kinesin family member 11 Rabbit Monoclonal Antibody - Protein Information**Name** KIF11**Synonyms** EG5, KNSL1, TRIP5**Function**

Motor protein required for establishing a bipolar spindle and thus contributing to chromosome congression during mitosis (PubMed: [19001501](http://www.uniprot.org/citations/19001501), PubMed: [37728657](http://www.uniprot.org/citations/37728657)). Required in non-mitotic cells for transport of secretory proteins from the Golgi complex to the cell surface (PubMed: [37728657](#)).

href="http://www.uniprot.org/citations/23857769" target="_blank">23857769).

Cellular Location

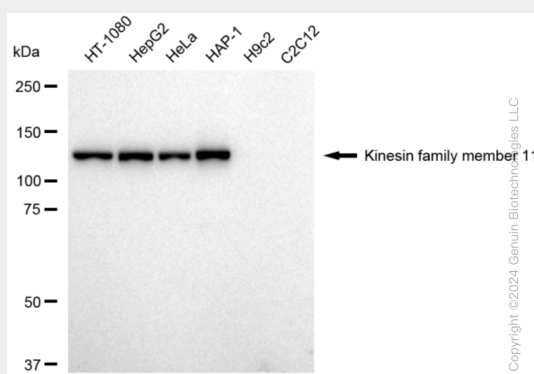
Cytoplasm. Cytoplasm, cytoskeleton, spindle pole

KD-Validated Anti-Kinesin family member 11 Rabbit Monoclonal Antibody - Protocols

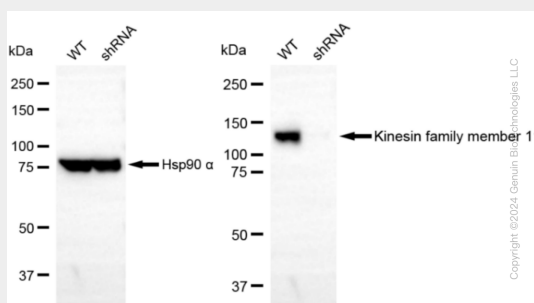
Provided below are standard protocols that you may find useful for product applications.

- [Western Blot](#)
- [Blocking Peptides](#)
- [Dot Blot](#)
- [Immunohistochemistry](#)
- [Immunofluorescence](#)
- [Immunoprecipitation](#)
- [Flow Cytometry](#)
- [Cell Culture](#)

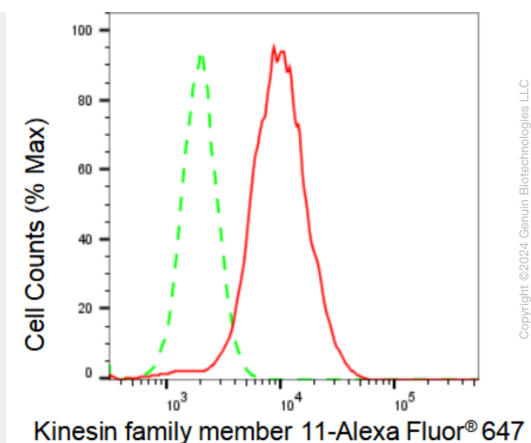
KD-Validated Anti-Kinesin family member 11 Rabbit Monoclonal Antibody - Images



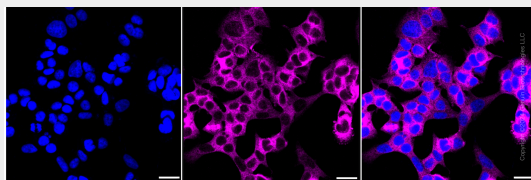
Western blotting analysis using anti-Kinesin family member 11 antibody (Cat#AGI1001). Total cell lysates (30 µg) from various cell lines were loaded and separated by SDS-PAGE. The blot was incubated with anti-Kinesin family member 11 antibody (Cat#AGI1001, 1:5,000) and HRP-conjugated goat anti-rabbit secondary antibody respectively.



Western blotting analysis using anti-Kinesin family member 11 antibody (Cat#AGI1001). Kinesin family member 11 expression in wild type (WT) and kinesin family member 11 shRNA knockdown (KD) HeLa cells with 30 µg of total cell lysates. β-Tubulin serves as a loading control. The blot was incubated with anti-Kinesin family member 11 antibody (Cat#AGI1001, 1:5,000) and HRP-conjugated goat anti-rabbit secondary antibody respectively.



Flow cytometric analysis of Kinesin family member 11 expression in HAP-1 cells using Kinesin family member 11 antibody (Cat#AGI1001, 1:2,000). Green, isotype control; red, Kinesin family member 11.



Immunocytochemical staining of HAP-1 cells with Kinesin family member 11 antibody (Cat#AGI1001, 1:1,000). Nuclei were stained blue with DAPI; Kinesin family member 11 was stained magenta with Alexa Fluor® 647. Images were taken using Leica stellaris 5. Protein abundance based on laser Intensity and smart gain: Medium. Scale bar: 20 µm.