

**KD-Validated Anti-CRTC3 Rabbit Monoclonal Antibody**  
**Rabbit monoclonal antibody**  
**Catalog # AGI1016****Specification****KD-Validated Anti-CRTC3 Rabbit Monoclonal Antibody - Product Information**

Application	WB, FC, ICC
Primary Accession	<a href="#">Q6UUV7</a>
Reactivity	Rat, Human, Mouse
Clonality	Monoclonal
Isotype	Rabbit IgG
Calculated MW	Predicted, 67 kDa, observed, 67 kDa kDa
Gene Name	CRTC3
Aliases	CRTC3; CREB Regulated Transcription Coactivator 3; CREB-Regulated Transcription Coactivator 3; FLJ21868; TORC-3; TORC3; Transducer Of Regulated CAMP Response Element-Binding Protein (CREB) 3; Transducer Of Regulated CAMP Response Element-Binding Protein 3; Transducer Of Regulated CREB Protein 3; Transducer Of CREB Protein 3
Immunogen	A synthesized peptide derived from CRTC3

**KD-Validated Anti-CRTC3 Rabbit Monoclonal Antibody - Additional Information**

Gene ID	64784
<b>Other Names</b>	
CREB-regulated transcription coactivator 3, Transducer of regulated cAMP response element-binding protein 3, TORC-3, Transducer of CREB protein 3, CRTC3, TORC3	

**KD-Validated Anti-CRTC3 Rabbit Monoclonal Antibody - Protein Information****Name** CRTC3**Synonyms** TORC3**Function**

Transcriptional coactivator for CREB1 which activates transcription through both consensus and variant cAMP response element (CRE) sites. Acts as a coactivator, in the SIK/TORC signaling pathway, being active when dephosphorylated and acts independently of CREB1 'Ser-133' phosphorylation. Enhances the interaction of CREB1 with TAF4. Regulates the expression of specific CREB-activated genes such as the steroidogenic gene, StAR. Potent coactivator of PPARGC1A and inducer of mitochondrial biogenesis in muscle cells. Also coactivator for TAX activation of the human T-cell leukemia virus type 1 (HTLV-1) long terminal repeats (LTR).

**Cellular Location**

Nucleus. Cytoplasm. Note=Appears to be mainly nuclear (PubMed:15454081). Translocates to the

nucleus following adenylyl cyclase or MAP kinase activation (PubMed:30611118)

### Tissue Location

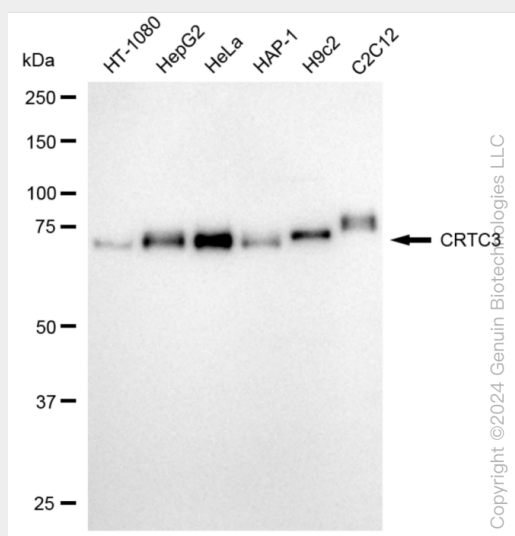
Predominantly expressed in B and T lymphocytes. Highest levels in lung. Also expressed in brain, colon, heart, kidney, ovary, and prostate. Weak expression in liver, pancreas, muscle, small intestine, spleen and stomach.

### KD-Validated Anti-CRTC3 Rabbit Monoclonal Antibody - Protocols

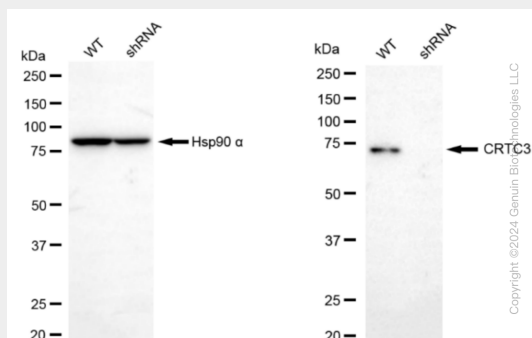
Provided below are standard protocols that you may find useful for product applications.

- [Western Blot](#)
- [Blocking Peptides](#)
- [Dot Blot](#)
- [Immunohistochemistry](#)
- [Immunofluorescence](#)
- [Immunoprecipitation](#)
- [Flow Cytometry](#)
- [Cell Culture](#)

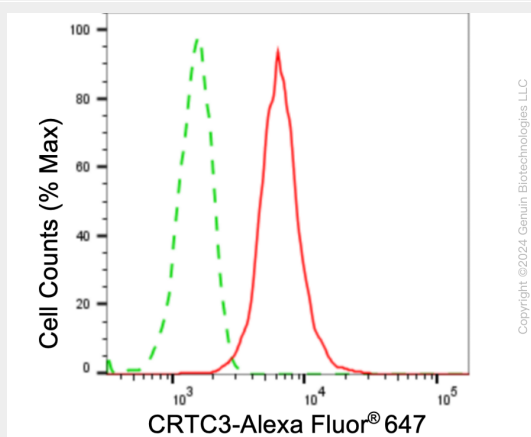
### KD-Validated Anti-CRTC3 Rabbit Monoclonal Antibody - Images



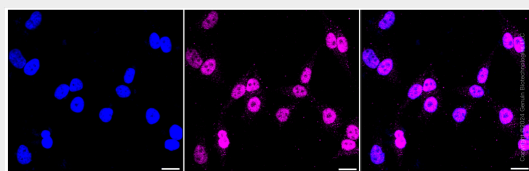
Western blotting analysis using anti-CRTC3 antibody (Cat#AGI1016). Total cell lysates (30 µg) from various cell lines were loaded and separated by SDS-PAGE. The blot was incubated with anti-CRTC3 antibody (Cat#AGI1016, 1:5,000) and HRP-conjugated goat anti-rabbit secondary antibody respectively.



Western blotting analysis using anti-CRTC3 antibody (Cat#AGI1016). CRTC3 expression in wild type (WT) and CRTC3 shRNA knockdown (KD) HT-1080 cells with 20  $\mu$ g of total cell lysates.  $\beta$ -Tubulin serves as a loading control. The blot was incubated with anti-CRTC3 antibody (Cat#AGI1016, 1:5,000) and HRP-conjugated goat anti-rabbit secondary antibody respectively.



Flow cytometric analysis of CRTC3 expression in HeLa cells using CRTC3 antibody (Cat#AGI1016, 1:2,000). Green, isotype control; red, CRTC3.



Immunocytochemical staining of HeLa cells with CRTC3 antibody (Cat#AGI1016, 1:1,000). Nuclei were stained blue with DAPI; CRTC3 was stained magenta with Alexa Fluor® 647. Images were taken using Leica stellaris 5. Protein abundance based on laser Intensity and smart gain: Medium. Scale bar: 20  $\mu$ m.