

KD-Validated Anti-MCM6 Rabbit Monoclonal Antibody
Rabbit monoclonal antibody
Catalog # AGI1019**Specification****KD-Validated Anti-MCM6 Rabbit Monoclonal Antibody - Product Information**

Application	WB, FC, ICC
Primary Accession	Q14566
Reactivity	Rat, Human, Mouse
Clonality	Monoclonal
Isotype	Rabbit IgG
Calculated MW	Predicted, 93 kDa , observed, 93 kDa KDa
Gene Name	MCM6
Aliases	MCM6; Minichromosome Maintenance Complex Component 6; Minichromosome Maintenance Deficient (Mis5, S. Pombe) 6; DNA Replication Licensing Factor MCM6; P105MCM; Mis5; MCM6 Minichromosome Maintenance Deficient 6 (MIS5 Homolog, S. Pombe) (S. Cerevisiae); MCM6 Minichromosome Maintenance Deficient 6 (MIS5 Homolog, S. Pombe); Minichromosome Maintenance Deficient 6 Homolog (S. Cerevisiae); MIS5 Homolog (S.Pombe); EC 3.6.4.12; MCG40308; MIS5 A synthesized peptide derived from human MCM6
Immunogen	

KD-Validated Anti-MCM6 Rabbit Monoclonal Antibody - Additional Information

Gene ID	4175
Other Names	
DNA replication licensing factor MCM6, 3.6.4.12, p105MCM, MCM6 (HGNC:6949)	

KD-Validated Anti-MCM6 Rabbit Monoclonal Antibody - Protein Information**Name** MCM6 ([HGNC:6949](#))**Function**

Acts as a component of the MCM2-7 complex (MCM complex) which is the replicative helicase essential for 'once per cell cycle' DNA replication initiation and elongation in eukaryotic cells. Core component of CDC45-MCM-GINS (CMG) helicase, the molecular machine that unwinds template DNA during replication, and around which the replisome is built (PubMed:16899510, PubMed:32453425, PubMed:34694004, PubMed:34694004, PubMed:34694004)

href="http://www.uniprot.org/citations/34700328" target="_blank">34700328, PubMed:35585232, PubMed:9305914). The active ATPase sites in the MCM2-7 ring are formed through the interaction surfaces of two neighboring subunits such that a critical structure of a conserved arginine finger motif is provided in trans relative to the ATP-binding site of the Walker A box of the adjacent subunit. The six ATPase active sites, however, are likely to contribute differentially to the complex helicase activity (PubMed:32453425).

Cellular Location

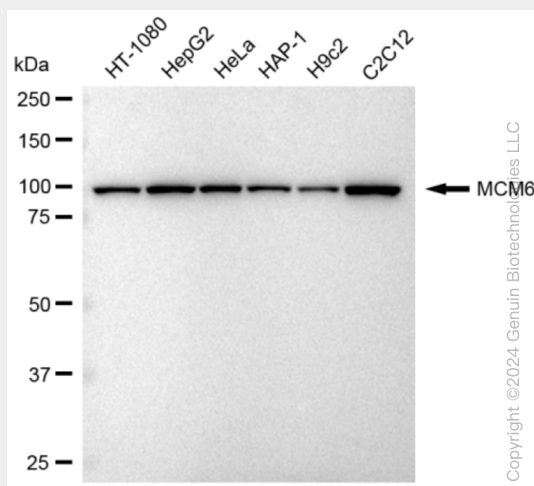
Nucleus. Chromosome. Note= Binds to chromatin during G1 and detaches from it during S phase.

KD-Validated Anti-MCM6 Rabbit Monoclonal Antibody - Protocols

Provided below are standard protocols that you may find useful for product applications.

- [Western Blot](#)
- [Blocking Peptides](#)
- [Dot Blot](#)
- [Immunohistochemistry](#)
- [Immunofluorescence](#)
- [Immunoprecipitation](#)
- [Flow Cytometry](#)
- [Cell Culture](#)

KD-Validated Anti-MCM6 Rabbit Monoclonal Antibody - Images



Western blotting analysis using anti-MCM6 antibody (Cat#AGI1019). Total cell lysates (30 µg) from various cell lines were loaded and separated by SDS-PAGE. The blot was incubated with anti-MCM6 antibody (Cat#AGI1019, 1:5,000) and HRP-conjugated goat anti-rabbit secondary antibody respectively.

