

**KD-Validated Anti-IQGAP2 Rabbit Monoclonal Antibody**  
**Rabbit monoclonal antibody**  
**Catalog # AGI1021****Specification**

---

**KD-Validated Anti-IQGAP2 Rabbit Monoclonal Antibody - Product Information**

Application	WB, ICC
Primary Accession	<a href="#">Q13576</a>
Reactivity	Human
Clonality	Monoclonal
Isotype	Rabbit IgG
Calculated MW	Predicted, 181 kDa , observed, 181 kDa kDa
Gene Name	IQGAP2
Aliases	IQGAP2; IQ Motif Containing GTPase Activating Protein 2; Ras GTPase-Activating-Like Protein IQGAP2
Immunogen	A synthesized peptide derived from human IQGAP2

**KD-Validated Anti-IQGAP2 Rabbit Monoclonal Antibody - Additional Information**

Gene ID	10788
<b>Other Names</b>	
Ras GTPase-activating-like protein IQGAP2, IQGAP2	

**KD-Validated Anti-IQGAP2 Rabbit Monoclonal Antibody - Protein Information****Name** IQGAP2**Function**

Binds to activated CDC42 and RAC1 but does not seem to stimulate their GTPase activity.  
Associates with calmodulin.

**Tissue Location**

Isoform 2 expression is enhanced in testis.

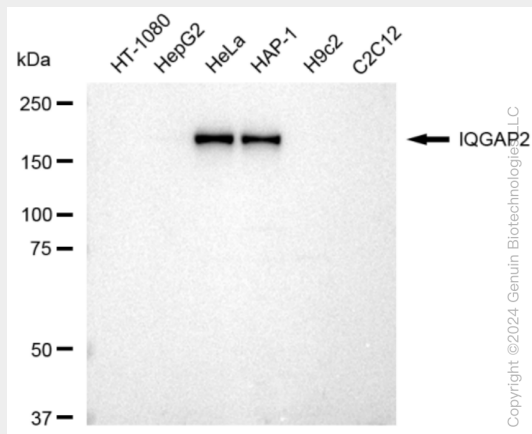
**KD-Validated Anti-IQGAP2 Rabbit Monoclonal Antibody - Protocols**

Provided below are standard protocols that you may find useful for product applications.

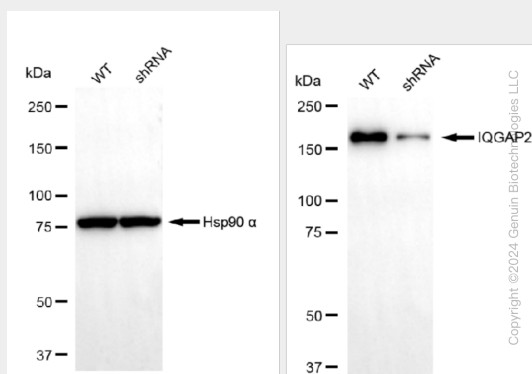
- [Western Blot](#)
- [Blocking Peptides](#)
- [Dot Blot](#)
- [Immunohistochemistry](#)
- [Immunofluorescence](#)

- [Immunoprecipitation](#)
- [Flow Cytometry](#)
- [Cell Culture](#)

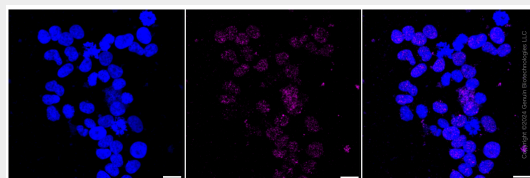
## KD-Validated Anti-IQGAP2 Rabbit Monoclonal Antibody - Images



Western blotting analysis using anti-IQGAP2 antibody (Cat#AGI1021). Total cell lysates (30 µg) from various cell lines were loaded and separated by SDS-PAGE. The blot was incubated with anti-IQGAP2 antibody (Cat#AGI1021, 1:5,000) and HRP-conjugated goat anti-rabbit secondary antibody respectively.



Western blotting analysis using anti-IQGAP2 antibody (Cat#AGI1021). IQGAP2 expression in wild type (WT) and IQGAP2 shRNA knockdown (KD) 293T cells with 30 µg of total cell lysates. Hsp90 α serves as a loading control. The blot was incubated with anti-IQGAP2 antibody (Cat#AGI1021, 1:5,000) and HRP-conjugated goat anti-rabbit secondary antibody respectively.



Immunocytochemical staining of HeLa cells with IQGAP2 antibody (Cat#AGI1021, 1:1,000). Nuclei were stained blue with DAPI; IQGAP2 was stained magenta with Alexa Fluor® 647. Images were taken using Leica stellaris 5. Protein abundance based on laser Intensity and smart gain: Very low. Scale bar: 20 µm.