

**KD-Validated Anti-CDKN2C Rabbit Monoclonal Antibody**  
**Rabbit monoclonal antibody**  
**Catalog # AGI1022****Specification****KD-Validated Anti-CDKN2C Rabbit Monoclonal Antibody - Product Information**

Application	WB, FC, ICC
Primary Accession	<a href="#">P42773</a>
Reactivity	Rat, Human, Mouse
Clonality	Monoclonal
Isotype	Rabbit IgG
Calculated MW	Predicted, 18 kDa, observed, 15 kDa
Gene Name	CDKN2C
Aliases	CDKN2C; Cyclin Dependent Kinase Inhibitor 2C; INK4C; P18; Cyclin-Dependent Kinase Inhibitor 2C (P18, Inhibits CDK4); Cyclin-Dependent Kinase 4 Inhibitor C; P18-INK6; Cyclin-Dependent Kinase 6 Inhibitor P18; Cyclin-Dependent Kinase 6 Inhibitor; Cyclin-Dependent Inhibitor; CDK6 Inhibitor P18; P18-INK4C; P18-INK4c; CDKN6
Immunogen	A synthesized peptide derived from human CDKN2C

**KD-Validated Anti-CDKN2C Rabbit Monoclonal Antibody - Additional Information**

Gene ID	1031
<b>Other Names</b>	
Cyclin-dependent kinase 4 inhibitor C, Cyclin-dependent kinase 6 inhibitor, p18-INK4c, p18-INK6, CDKN2C, CDKN6	

**KD-Validated Anti-CDKN2C Rabbit Monoclonal Antibody - Protein Information****Name** CDKN2C**Synonyms** CDKN6**Function**

Interacts strongly with CDK6, weakly with CDK4. Inhibits cell growth and proliferation with a correlated dependence on endogenous retinoblastoma protein RB.

**Tissue Location**

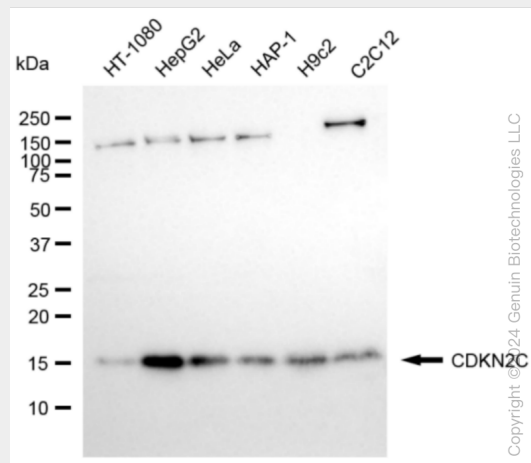
Highest levels found in skeletal muscle. Also found in pancreas and heart

**KD-Validated Anti-CDKN2C Rabbit Monoclonal Antibody - Protocols**

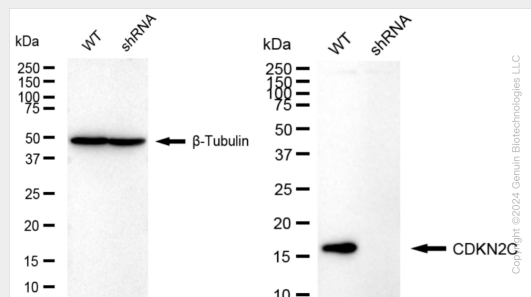
Provided below are standard protocols that you may find useful for product applications.

- [Western Blot](#)
- [Blocking Peptides](#)
- [Dot Blot](#)
- [Immunohistochemistry](#)
- [Immunofluorescence](#)
- [Immunoprecipitation](#)
- [Flow Cytometry](#)
- [Cell Culture](#)

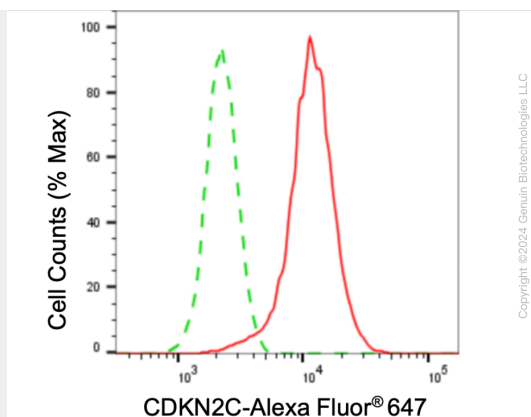
### KD-Validated Anti-CDKN2C Rabbit Monoclonal Antibody - Images



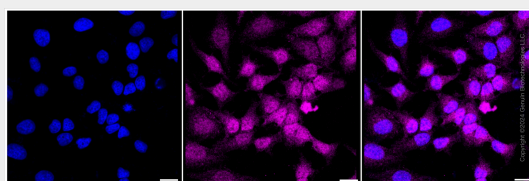
Western blotting analysis using anti-CDKN2C antibody (Cat#AGI1022). Total cell lysates (30 µg) from various cell lines were loaded and separated by SDS-PAGE. The blot was incubated with anti-CDKN2C antibody (Cat#AGI1022, 1:5,000) and HRP-conjugated goat anti-rabbit secondary antibody respectively.



Western blotting analysis using anti-CDKN2C antibody (Cat#AGI1022). CDKN2C expression in wild type (WT) and CDKN2C shRNA knockdown (KD) HeLa cells with 20 µg of total cell lysates. β-Tubulin serves as a loading control. The blot was incubated with anti-CDKN2C antibody (Cat#AGI1022, 1:5,000) and HRP-conjugated goat anti-rabbit secondary antibody respectively.



Flow cytometric analysis of CDKN2C expression in HeLa cells using CDKN2C antibody (Cat#AGI1022, 1:2,000). Green, isotype control; red, CDKN2C.



Immunocytochemical staining of HeLa cells with anti-CDKN2C antibody (Cat#AGI1022, 1:1,000). Nuclei were stained blue with DAPI; CDKN2C was stained magenta with Alexa Fluor® 647. Images were taken using Leica stellaris 5. Protein abundance based on laser Intensity and smart gain: Medium. Scale bar: 20  $\mu$ m.