

KD-Validated Anti-LGI1 Rabbit Monoclonal Antibody
Rabbit monoclonal antibody
Catalog # AGI1024**Specification****KD-Validated Anti-LGI1 Rabbit Monoclonal Antibody - Product Information**

Application	WB, FC, ICC
Primary Accession	O95970
Reactivity	Human
Clonality	Monoclonal
Isotype	Rabbit IgG
Calculated MW	Predicted, 64 kDa, observed, 64 kDa kDa
Gene Name	LGI1
Aliases	LGI1; Leucine Rich Glioma Inactivated 1; Epitempin-1; EPITEMPIN; IB1099; ETL1; EPT; Leucine-Rich Glioma-Inactivated Protein 1; Epilepsy, Partial; ADPAEF; ADPEAF; ADLTE
Immunogen	A synthesized peptide derived from human Lgi1

KD-Validated Anti-LGI1 Rabbit Monoclonal Antibody - Additional Information

Gene ID	9211
Other Names	
Leucine-rich glioma-inactivated protein 1, Epitempin-1, LGI1, EPT	

KD-Validated Anti-LGI1 Rabbit Monoclonal Antibody - Protein Information**Name** LGI1**Synonyms** EPT**Function**

Regulates voltage-gated potassium channels assembled from KCNA1, KCNA4 and KCNAB1. It slows down channel inactivation by precluding channel closure mediated by the KCNAB1 subunit. Ligand for ADAM22 that positively regulates synaptic transmission mediated by AMPA-type glutamate receptors (By similarity). Plays a role in suppressing the production of MMP1/3 through the phosphatidylinositol 3-kinase/ERK pathway. May play a role in the control of neuroblastoma cell survival.

Cellular Location

Secreted. Synapse {ECO:0000250|UniProtKB:Q8K4Y5}. Cytoplasm {ECO:0000250|UniProtKB:Q9JIA1} [Isoform 2]: Endoplasmic reticulum. Cytoplasm {ECO:0000250|UniProtKB:Q9JIA1}

Tissue Location

Predominantly expressed in neural tissues, especially in brain. Expression is reduced in low-grade

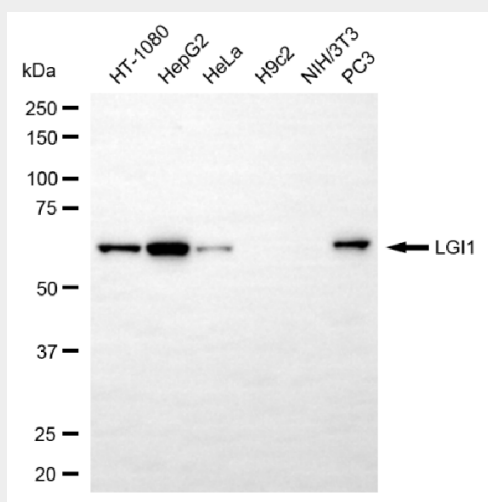
brain tumors and significantly reduced or absent in malignant gliomas [Isoform 3]: Abundantly expressed in the occipital cortex and weakly expressed in the hippocampus (at protein level)

KD-Validated Anti-LGI1 Rabbit Monoclonal Antibody - Protocols

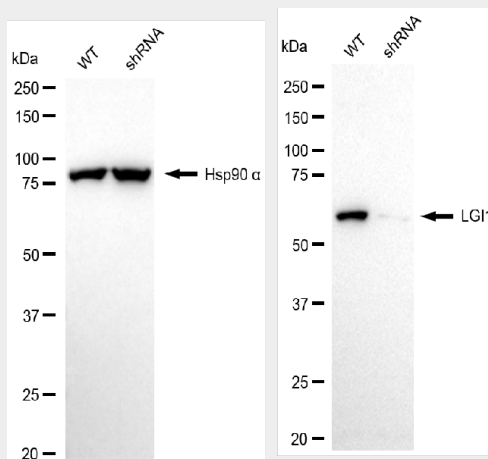
Provided below are standard protocols that you may find useful for product applications.

- [Western Blot](#)
- [Blocking Peptides](#)
- [Dot Blot](#)
- [Immunohistochemistry](#)
- [Immunofluorescence](#)
- [Immunoprecipitation](#)
- [Flow Cytometry](#)
- [Cell Culture](#)

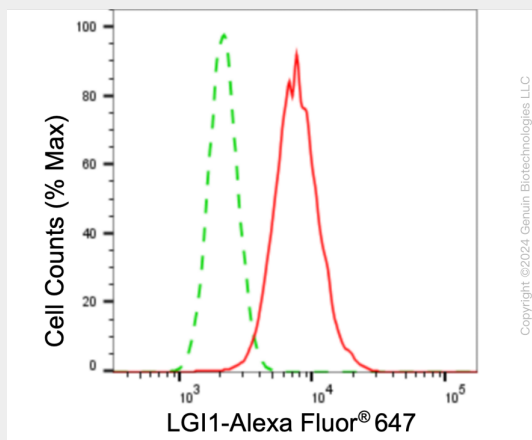
KD-Validated Anti-LGI1 Rabbit Monoclonal Antibody - Images



Western blotting analysis using anti-LGI1 antibody (Cat#AGI1024). Total cell lysates (30 µg) from various cell lines were loaded and separated by SDS-PAGE. The blot was incubated with anti-LGI1 antibody (Cat#AGI1024, 1:5,000) and HRP-conjugated goat anti-rabbit secondary antibody respectively.



Western blotting analysis using anti-LGI1 antibody (Cat.#AGI1024). LGI1 expression in wild type (WT) and LGI1 shRNA knockdown (KD) HeLa cells with 20 µg of Total cell lysates. Hsp90 α serves as a loading control. The blot was incubated with anti-LGI1 antibody (Cat.#AGI1024, 1:5,000) and HRP-conjugated goat anti rabbit secondary antibody (Cat.# 201, 1:20000) respectively.



Flow cytometric analysis of LGI1 expression in HepG2 cells using LGI1 antibody (Cat#AGI1024, 1:2,000). Green, isotype control; red, LGI1.