

KD-Validated Anti-Dihydropyrimidine dehydrogenase Rabbit Monoclonal Antibody
Rabbit monoclonal antibody
Catalog # AGI1033**Specification****KD-Validated Anti-Dihydropyrimidine dehydrogenase Rabbit Monoclonal Antibody - Product Information**

Application	WB, FC, ICC
Primary Accession	Q12882
Reactivity	Rat, Human
Clonality	Monoclonal
Isotype	Rabbit IgG
Calculated MW	Predicted, 111 kDa, observed, 110 kDa
Gene Name	DPYD
Aliases	DPYD; Dihydropyrimidine Dehydrogenase; DPD; Dihydrothymine Dehydrogenase; Dihydrouracil Dehydrogenase ; Dihydropyrimidine Dehydrogenase [NADP(+)] ; EC 1.3.1.2; DHPDHase; DHPDHASE; DYPD; DHP
Immunogen	A synthesized peptide derived from human DPYD

KD-Validated Anti-Dihydropyrimidine dehydrogenase Rabbit Monoclonal Antibody - Additional Information

Gene ID	1806
Other Names	Dihydropyrimidine dehydrogenase [NADP(+)], DHPDHase, DPD, 1.3.1.2, Dihydrothymine dehydrogenase, Dihydrouracil dehydrogenase, DPYD (http://www.genenames.org/cgi-bin/gene_symbol_report?hgnc_id=3012)

KD-Validated Anti-Dihydropyrimidine dehydrogenase Rabbit Monoclonal Antibody - Protein Information**Name** DPYD ([HGNC:3012](#))**Function**

Involved in pyrimidine base degradation (PubMed:[1512248](http://www.uniprot.org/citations/1512248)). Catalyzes the reduction of uracil and thymine (PubMed:[1512248](http://www.uniprot.org/citations/1512248)). Also involved the degradation of the chemotherapeutic drug 5-fluorouracil (PubMed:[1512248](http://www.uniprot.org/citations/1512248)).

Cellular Location

Cytoplasm.

Tissue Location

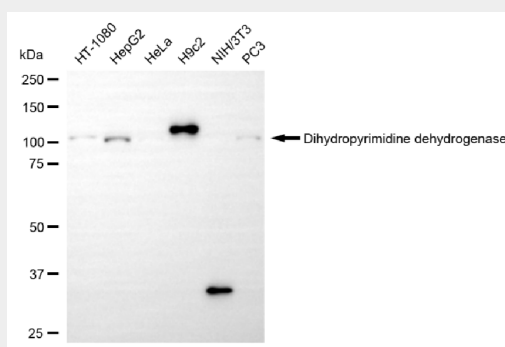
Found in most tissues with greatest activity found in liver and peripheral blood mononuclear cells

KD-Validated Anti-Dihydropyrimidine dehydrogenase Rabbit Monoclonal Antibody - Protocols

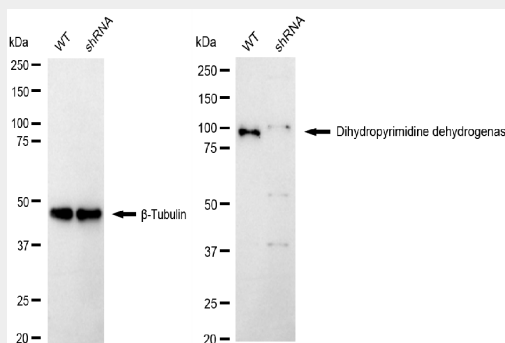
Provided below are standard protocols that you may find useful for product applications.

- [Western Blot](#)
- [Blocking Peptides](#)
- [Dot Blot](#)
- [Immunohistochemistry](#)
- [Immunofluorescence](#)
- [Immunoprecipitation](#)
- [Flow Cytometry](#)
- [Cell Culture](#)

KD-Validated Anti-Dihydropyrimidine dehydrogenase Rabbit Monoclonal Antibody - Images

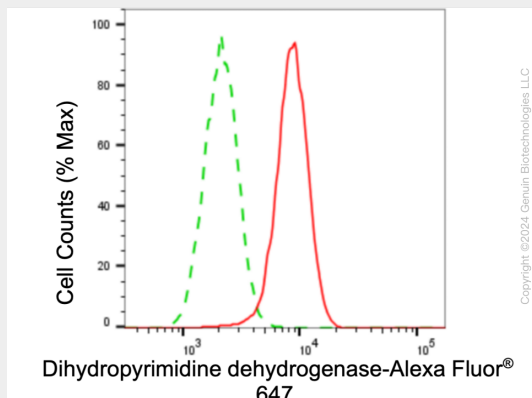


Western blotting analysis using anti-dihydropyrimidine dehydrogenase antibody (Cat#61151). Total cell lysates (30 µg) from various cell lines were loaded and separated by SDS-PAGE. The blot was incubated with anti-dihydropyrimidine dehydrogenase antibody (Cat#61151, 1:5,000) and HRP-conjugated goat anti-rabbit secondary antibody (Cat#201, 1:20,000) respectively. Image was developed using NaQ™ ECL Substrate Kit (Cat#716).



Western blotting analysis using anti-Dihydropyrimidine dehydrogenase antibody (Cat#61151). Dihydropyrimidine dehydrogenase expression in wild type (WT) and Dihydropyrimidine dehydrogenase shRNA knockdown (KD) HeLa cells with 20 µg of total cell lysates. β-Tubulin serves

as a loading control. The blot was incubated with anti-Dihydropyrimidine dehydrogenase antibody (Cat#61151, 1:5,000) and HRP-conjugated goat anti-rabbit secondary antibody (Cat#201, 1:20,000) respectively. Image was developed using NaQ™ ECL Substrate Kit (Cat#716).



Flow cytometric analysis of dihydropyrimidine dehydrogenase expression in H9c2 cells using dihydropyrimidine dehydrogenase antibody (Cat#61151, 1:2,000). Green, isotype control; red, dihydropyrimidine dehydrogenase.