

**KD-Validated Anti-Homeobox B4 Rabbit Monoclonal Antibody**  
**Rabbit monoclonal antibody**  
**Catalog # AGI1038****Specification**

---

**KD-Validated Anti-Homeobox B4 Rabbit Monoclonal Antibody - Product Information**

Application	WB, FC, ICC
Primary Accession	<a href="#">P17483</a>
Reactivity	Rat, Human
Clonality	Monoclonal
Isotype	Rabbit IgG
Calculated MW	Predicted, 28 kDa, observed, 34 kDa
Gene Name	KDa HOXB4
Aliases	HOXB4; Homeobox B4; HOX2F; Homeobox Protein Hox-2.6; Homeobox Protein Hox-B4; Homeobox Protein Hox-2F; Homeobox B4; HOX2; Homeobox 2F; HOX-2.6
Immunogen	A synthesized peptide derived from human HOXB4

**KD-Validated Anti-Homeobox B4 Rabbit Monoclonal Antibody - Additional Information**

Gene ID	3214
<b>Other Names</b>	
Homeobox protein Hox-B4, Homeobox protein Hox-2.6, Homeobox protein Hox-2F, HOXB4, HOX2F	

**KD-Validated Anti-Homeobox B4 Rabbit Monoclonal Antibody - Protein Information****Name** HOXB4**Synonyms** HOX2F**Function**

Sequence-specific transcription factor which is part of a developmental regulatory system that provides cells with specific positional identities on the anterior-posterior axis.

**Cellular Location**

Nucleus.

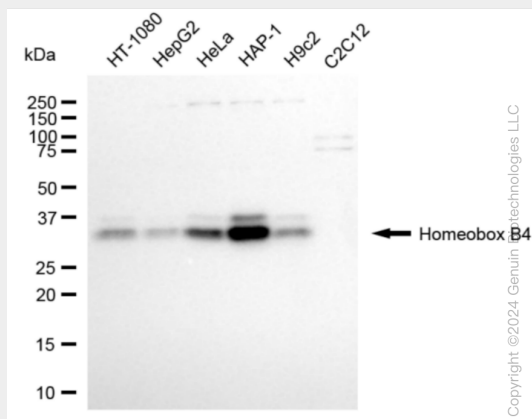
**KD-Validated Anti-Homeobox B4 Rabbit Monoclonal Antibody - Protocols**

Provided below are standard protocols that you may find useful for product applications.

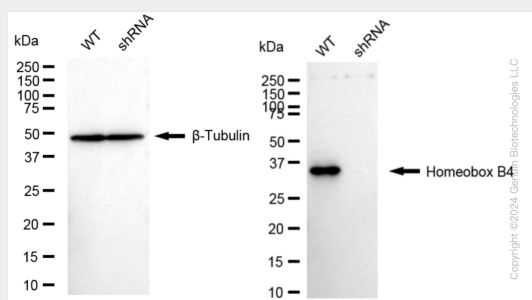
- [Western Blot](#)
- [Blocking Peptides](#)
- [Dot Blot](#)

- [Immunohistochemistry](#)
- [Immunofluorescence](#)
- [Immunoprecipitation](#)
- [Flow Cytometry](#)
- [Cell Culture](#)

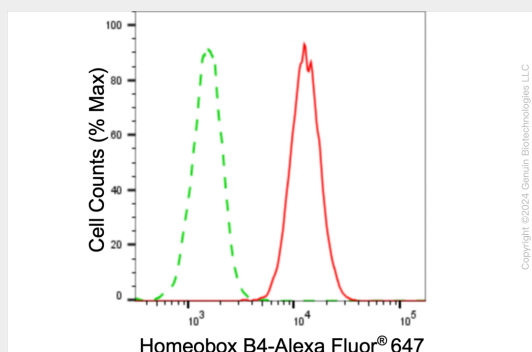
## KD-Validated Anti-Homeobox B4 Rabbit Monoclonal Antibody - Images



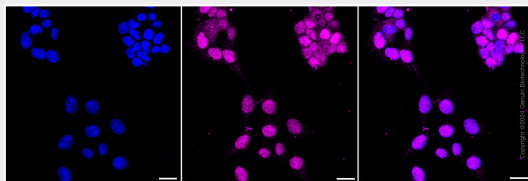
Western blotting analysis using anti-homeobox B4 antibody (Cat#AGI1038). Total cell lysates (30 µg) from various cell lines were loaded and separated by SDS-PAGE. The blot was incubated with anti-homeobox B4 antibody (Cat#AGI1038, 1:5,000) and HRP-conjugated goat anti-rabbit secondary antibody respectively.



Western blotting analysis using anti-homeobox B4 antibody (Cat#AGI1038). Homeobox B4 expression in wild type (WT) and homeobox B4 (HOXB4) shRNA knockdown (KD) HeLa cells with 20 µg of total cell lysates. β-Tubulin serves as a loading control. The blot was incubated with anti-homeobox B4 antibody (Cat#AGI1038, 1:5,000) and HRP-conjugated goat anti-rabbit secondary antibody respectively.



Flow cytometric analysis of homeobox B4 expression in HAP-1 cells using anti-homeobox B4 antibody (Cat#AGI1038, 1:2,000). Green, isotype control; red, homeobox B4.



Immunocytochemical staining of HAP-1 cells with anti-Homeobox B4 antibody (Cat#AGI1038, 1:1,000). Nuclei were stained blue with DAPI; Homeobox B4 was stained magenta with Alexa Fluor® 647. Images were taken using Leica stellaris 5. Protein abundance based on laser Intensity and smart gain: Medium. Scale bar, 20  $\mu$ m.