

**KD-Validated Anti-Kinesin light chain 1 Rabbit Monoclonal Antibody**  
**Rabbit monoclonal antibody**  
**Catalog # AGI1044****Specification****KD-Validated Anti-Kinesin light chain 1 Rabbit Monoclonal Antibody - Product Information**

Application	WB, FC, ICC
Primary Accession	<a href="#">Q07866</a>
Reactivity	Rat, Human, Mouse
Clonality	Monoclonal
Isotype	Rabbit IgG
Calculated MW	Predicted, 65 kDa, observed, 65 kDa kDa
Gene Name	KLC1
Aliases	KLC1; Kinesin Light Chain 1; KLC; KNS2A; KNS2; Kinesin 2 60/70kDa; HKLC1S; HKLC1N; HKLC1P; HKLC1G; HKLC1R; HKLC1J; HKLC1B; Medulloblastoma Antigen MU-MB-2.50; Kinesin 2; KLC
Immunogen	A synthesized peptide derived from human KLC1

**KD-Validated Anti-Kinesin light chain 1 Rabbit Monoclonal Antibody - Additional Information**

Gene ID	3831
<b>Other Names</b>	
Kinesin light chain 1, KLC 1, KLC1, KLC, KNS2	

**KD-Validated Anti-Kinesin light chain 1 Rabbit Monoclonal Antibody - Protein Information****Name** KLC1**Synonyms** KLC, KNS2**Function**

Kinesin is a microtubule-associated force-producing protein that may play a role in organelle transport (PubMed:<a href="http://www.uniprot.org/citations/21385839" target="\_blank">21385839</a>). The light chain may function in coupling of cargo to the heavy chain or in the modulation of its ATPase activity (By similarity).

**Cellular Location**

Cell projection, growth cone {ECO:0000250|UniProtKB:P37285}. Cytoplasmic vesicle. Cytoplasm, cytoskeleton

**Tissue Location**

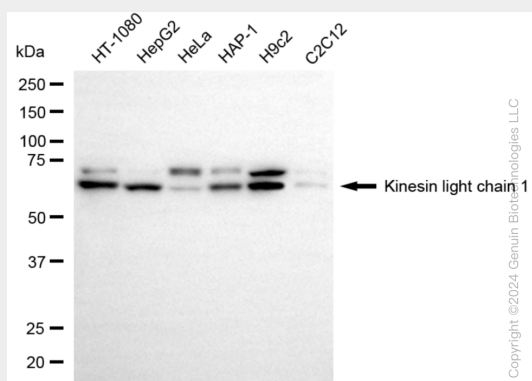
Found in a variety of tissues. Mostly abundant in brain and spine.

## KD-Validated Anti-Kinesin light chain 1 Rabbit Monoclonal Antibody - Protocols

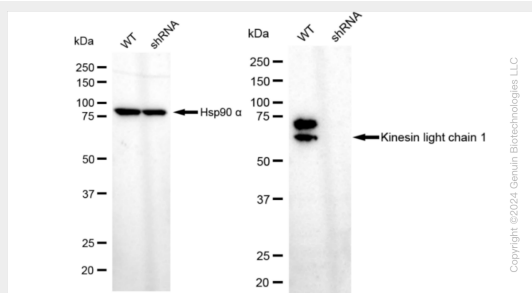
Provided below are standard protocols that you may find useful for product applications.

- [Western Blot](#)
- [Blocking Peptides](#)
- [Dot Blot](#)
- [Immunohistochemistry](#)
- [Immunofluorescence](#)
- [Immunoprecipitation](#)
- [Flow Cytometry](#)
- [Cell Culture](#)

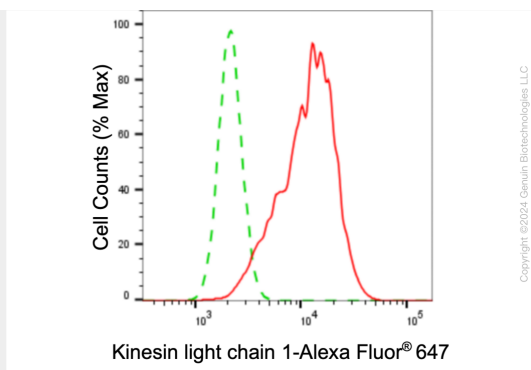
## KD-Validated Anti-Kinesin light chain 1 Rabbit Monoclonal Antibody - Images



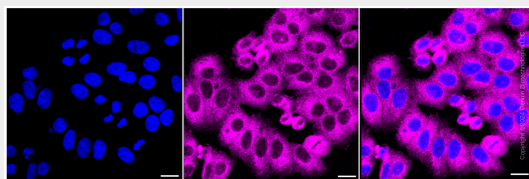
Western blotting analysis using anti-kinesin light chain 1 antibody (Cat#AGI1044). Total cell lysates (30 µg) from various cell lines were loaded and separated by SDS-PAGE. The blot was incubated with anti-kinesin light chain 1 antibody (Cat#AGI1044, 1:5,000) and HRP-conjugated goat anti-rabbit secondary antibody respectively.



Western blotting analysis using anti-kinesin light chain 1 antibody (Cat#AGI1044). Kinesin light chain 1 expression in wild type (WT) and kinesin light chain 1 (KLC1) shRNA knockdown (KD) HeLa cells with 20 µg of total cell lysates. Hsp90 α serves as a loading control. The blot was incubated with anti-kinesin light chain 1 antibody (Cat#AGI1044, 1:5,000) and HRP-conjugated goat anti-rabbit secondary antibody respectively.



Flow cytometric analysis of kinesin light chain 1 expression in HepG2 cells using kinesin light chain 1 antibody (Cat#AGI1044, 1:2,000). Green, isotype control; red, kinesin light chain 1.



Immunocytochemical staining of HepG2 cells with anti-kinesin light chain 1 antibody (Cat#AGI1044, 1:1,000). Nuclei were stained blue with DAPI; Kinesin light chain 1 was stained magenta with Alexa Fluor® 647. Images were taken using Leica stellaris 5. Protein abundance based on laser Intensity and smart gain: Medium. Scale bar: 20  $\mu$ m.