

KD-Validated Anti-GTF2F2 Rabbit Monoclonal Antibody
Rabbit monoclonal antibody
Catalog # AGI1045**Specification**

KD-Validated Anti-GTF2F2 Rabbit Monoclonal Antibody - Product Information

Application	WB, ICC
Primary Accession	P13984
Reactivity	Rat, Human, Mouse
Clonality	Monoclonal
Isotype	Rabbit IgG
Calculated MW	Predicted, 28 kDa, observed, 30 kDa
Gene Name	KDa
Aliases	GTF2F2 GTF2F2; General Transcription Factor IIF Subunit 2; RAP30; TFIIF; BTF4; General Transcription Factor IIF, Polypeptide 2, 30kDa; Transcription Initiation Factor IIF Subunit Beta; General Transcription Factor IIF 30 KDa Subunit; Transcription Initiation Factor RAP30; TFIIF-Beta; General Transcription Factor IIF, Polypeptide 1 (74kD Subunit); ATP-Dependent Helicase GTF2F2; EC 3.6.1; TF2F2
Immunogen	A synthesized peptide derived from human GTF2F2

KD-Validated Anti-GTF2F2 Rabbit Monoclonal Antibody - Additional Information

Gene ID	2963
Other Names	
General transcription factor IIF subunit 2, General transcription factor IIF 30 kDa subunit, Transcription initiation factor IIF subunit beta, TFIIF-beta, Transcription initiation factor RAP30, GTF2F2, RAP30	

KD-Validated Anti-GTF2F2 Rabbit Monoclonal Antibody - Protein Information**Name** GTF2F2**Synonyms** RAP30**Function**

TFIIF is a general transcription initiation factor that binds to RNA polymerase II and helps to recruit it to the initiation complex in collaboration with TFIIB.

Cellular Location

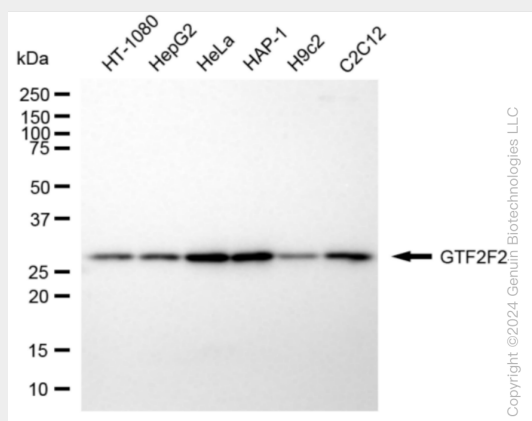
Nucleus.

KD-Validated Anti-GTF2F2 Rabbit Monoclonal Antibody - Protocols

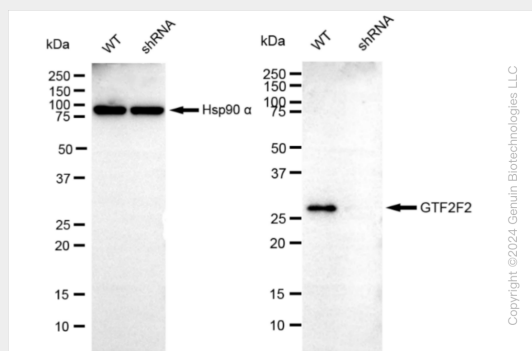
Provided below are standard protocols that you may find useful for product applications.

- [Western Blot](#)
- [Blocking Peptides](#)
- [Dot Blot](#)
- [Immunohistochemistry](#)
- [Immunofluorescence](#)
- [Immunoprecipitation](#)
- [Flow Cytometry](#)
- [Cell Culture](#)

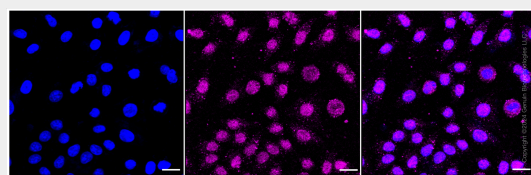
KD-Validated Anti-GTF2F2 Rabbit Monoclonal Antibody - Images



Western blotting analysis using anti-GTF2F2 antibody (Cat#AGI1045). Total cell lysates (30 µg) from various cell lines were loaded and separated by SDS-PAGE. The blot was incubated with anti-GTF2F2 antibody (Cat#AGI1045, 1:5,000) and HRP-conjugated goat anti-rabbit secondary antibody respectively.



Western blotting analysis using anti-GTF2F2 antibody (Cat#AGI1045). GTF2F2 expression in wild type (WT) and GTF2F2 shRNA knockdown (KD) HeLa cells with 20 µg of total cell lysates. β-Tubulin serves as a loading control. The blot was incubated with anti-GTF2F2 antibody (Cat#AGI1045, 1:5,000) and HRP-conjugated goat anti-rabbit secondary antibody respectively.



Immunocytochemical staining of HepG2 cells with anti-GTF2F2 antibody (Cat#AGI1045, 1:1,000). Nuclei were stained blue with DAPI; GTF2F2 was stained magenta with Alexa Fluor® 647. Images were taken using Leica stellaris 5. Protein abundance based on laser Intensity and smart gain: Low. Scale bar: 20 μ m.