

**KD-Validated Anti-IDH1 Rabbit Monoclonal Antibody**  
**Rabbit monoclonal antibody**  
**Catalog # AGI1060****Specification****KD-Validated Anti-IDH1 Rabbit Monoclonal Antibody - Product Information**

Application	WB, FC
Primary Accession	<a href="#">O75874</a>
Reactivity	Rat, Human, Mouse
Clonality	Monoclonal
Isotype	Rabbit IgG
Calculated MW	Predicted, 47 kDa , observed, 45 kDa KDa
Gene Name	IDH1
Aliases	IDH1; Isocitrate Dehydrogenase (NADP(+)) 1; Isocitrate Dehydrogenase (NADP(+)) 1, Cytosolic; Isocitrate Dehydrogenase 1 (NADP+), Soluble; Isocitrate Dehydrogenase [NADP] Cytoplasmic; Oxalosuccinate Decarboxylase; NADP(+)-Specific ICDH; EC 1.1.1.42; PICD; IDH; NADP-Dependent Isocitrate Dehydrogenase, Peroxisomal; NADP-Dependent Isocitrate Dehydrogenase, Cytosolic; Epididymis Secretory Sperm Binding Protein; Cytosolic NADP-Isocitrate Dehydrogenase; Isocitrate Dehydrogenase 1 (NADP+); Epididymis Secretory Protein Li 26; Epididymis Luminal Protein 216; HEL-S-26; HEL-216; IDCD; IDPC; IDPc; IDP
Immunogen	A synthesized peptide derived from human IDH1

**KD-Validated Anti-IDH1 Rabbit Monoclonal Antibody - Additional Information**

Gene ID	3417
<b>Other Names</b>	
Isocitrate dehydrogenase [NADP] cytoplasmic, IDH, IDH1, 1.1.1.42, Cytosolic NADP-isocitrate dehydrogenase, IDPc, NADP(+)-specific ICDH, Oxalosuccinate decarboxylase, IDH1, PICD	

**KD-Validated Anti-IDH1 Rabbit Monoclonal Antibody - Protein Information****Name** IDH1**Synonyms** PICD**Function**

Catalyzes the NADP(+)-dependent oxidative decarboxylation of isocitrate (D-threo-isocitrate) to

2-ketoglutarate (2-oxoglutarate), which is required by other enzymes such as the phytanoyl-CoA dioxygenase (PubMed:<a href="http://www.uniprot.org/citations/10521434" target="\_blank">10521434</a>, PubMed:<a href="http://www.uniprot.org/citations/19935646" target="\_blank">19935646</a>). Plays a critical role in the generation of NADPH, an important cofactor in many biosynthesis pathways (PubMed:<a href="http://www.uniprot.org/citations/10521434" target="\_blank">10521434</a>). May act as a corneal epithelial crystallin and may be involved in maintaining corneal epithelial transparency (By similarity).

#### Cellular Location

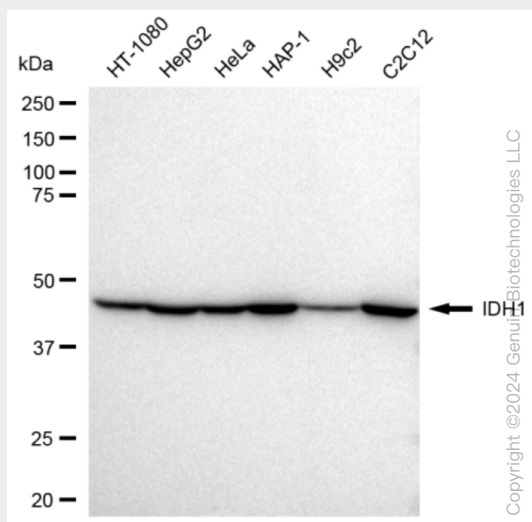
Cytoplasm, cytosol. Peroxisome

### KD-Validated Anti-IDH1 Rabbit Monoclonal Antibody - Protocols

Provided below are standard protocols that you may find useful for product applications.

- [Western Blot](#)
- [Blocking Peptides](#)
- [Dot Blot](#)
- [Immunohistochemistry](#)
- [Immunofluorescence](#)
- [Immunoprecipitation](#)
- [Flow Cytometry](#)
- [Cell Culture](#)

### KD-Validated Anti-IDH1 Rabbit Monoclonal Antibody - Images



Western blotting analysis using anti-IDH1 antibody (Cat#61181). Total cell lysates (30 µg) from various cell lines were loaded and separated by SDS-PAGE. The blot was incubated with anti-IDH1 antibody (Cat#61181, 1:5,000) and HRP-conjugated goat anti-rabbit secondary antibody (Cat#201, 1:20,000) respectively. Image was developed using FeQ™ ECL Substrate Kit (Cat#226).

