

KD-Validated Anti-Growth differentiation factor 3 Rabbit Monoclonal Antibody
Rabbit monoclonal antibody
Catalog # AGI1064**Specification**

KD-Validated Anti-Growth differentiation factor 3 Rabbit Monoclonal Antibody - Product Information

Application	WB
Primary Accession	Q9NR23
Reactivity	Rat, Human, Mouse
Clonality	Monoclonal
Isotype	Rabbit IgG
Calculated MW	Predicted, 41 kDa, observed, 16 kDa kDa
Gene Name	GDF3
Aliases	GDF3; Growth Differentiation Factor 3; MCOPCB6; MCOP7; GDF-3; KFS3
Immunogen	A synthesized peptide derived from human GDF3

KD-Validated Anti-Growth differentiation factor 3 Rabbit Monoclonal Antibody - Additional Information

Gene ID	9573
Other Names	
Growth/differentiation factor 3, GDF-3, GDF3	

KD-Validated Anti-Growth differentiation factor 3 Rabbit Monoclonal Antibody - Protein Information**Name** GDF3**Function**

Growth factor involved in early embryonic development and adipose-tissue homeostasis. During embryogenesis controls formation of anterior visceral endoderm and mesoderm and the establishment of anterior-posterior identity through a receptor complex comprising the receptor ACVR1B and the coreceptor CRIPTO (By similarity). Regulates adipose-tissue homeostasis and energy balance under nutrient overload in part by signaling through the receptor complex based on ACVR1C and CRIPTO/Cripto (PubMed:21805089).

Cellular Location

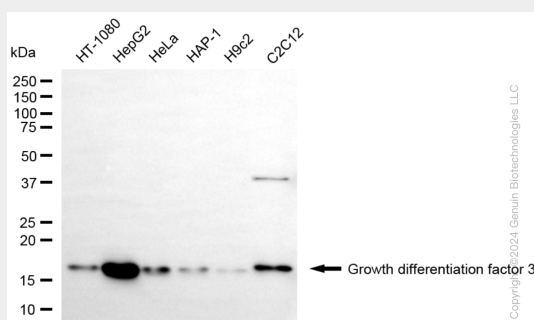
Secreted. Cytoplasm. Note=Mainly accumulated in the cytoplasm

KD-Validated Anti-Growth differentiation factor 3 Rabbit Monoclonal Antibody - Protocols

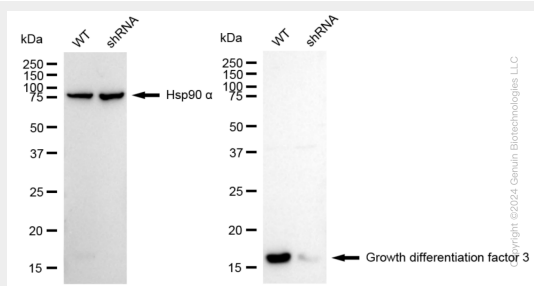
Provided below are standard protocols that you may find useful for product applications.

- [Western Blot](#)
- [Blocking Peptides](#)
- [Dot Blot](#)
- [Immunohistochemistry](#)
- [Immunofluorescence](#)
- [Immunoprecipitation](#)
- [Flow Cytometry](#)
- [Cell Culture](#)

KD-Validated Anti-Growth differentiation factor 3 Rabbit Monoclonal Antibody - Images



Western blotting analysis using anti-growth differentiation factor 3 antibody (Cat#61186). Total cell lysates (30 µg) from various cell lines were loaded and separated by SDS-PAGE. The blot was incubated with anti-growth differentiation factor 3 antibody (Cat#61186, 1:5,000) and HRP-conjugated goat anti-rabbit secondary antibody (Cat#201, 1:20,000) respectively. Image was developed using NaQ™ ECL Substrate Kit (Cat#716).



Western blotting analysis using anti-growth differentiation factor 3 antibody (Cat#61186). Growth differentiation factor 3 expression in wild type (WT) and growth differentiation factor 3 (GDF3) shRNA knockdown (KD) HeLa cells with 20 µg of total cell lysates. Hsp90 α serves as a loading control. The blot was incubated with anti-growth differentiation factor 3 antibody (Cat#61186, 1:5,000) and HRP-conjugated goat anti-rabbit secondary antibody (Cat#201, 1:20,000) respectively. Image was developed using NaQ™ ECL Substrate Kit (Cat#716).