

**KD-Validated Anti-LEFTY1 + LEFTY2 Rabbit Monoclonal Antibody**  
**Rabbit monoclonal antibody**  
**Catalog # AGI1068****Specification****KD-Validated Anti-LEFTY1 + LEFTY2 Rabbit Monoclonal Antibody - Product Information**

Application	WB, ICC
Primary Accession	<a href="#">O00292</a>
Reactivity	Rat, Human, Mouse
Clonality	Monoclonal
Isotype	Rabbit IgG
Calculated MW	Predicted, 41 kDa, observed, 34 kDa kDa
Gene Name	LEFTY2
Aliases	LEFTY1; Left-Right Determination Factor 1; LEFTYB; LEFTB; Left-Right Determination Factor B; Protein Lefty-1; Protein Lefty-B; Left-Right Determination, Factor B; LEFTY2; Left-Right Determination Factor 2; LEFTYA; LEFTA; TGFB4; EBAF; Endometrial Bleeding-Associated Factor; Left-Right Determination Factor A; Transforming Growth Factor Beta-4; Protein Lefty-2; Protein Lefty-A; TGF-Beta-4; Endometrial Bleeding Associated Factor (Left-Right Determination, Factor A; Transforming Growth Factor Beta Superfamily); Transforming Growth Factor, Beta-4 (Endometrial Bleeding-Associated Factor; LEFTY A)
Immunogen	A synthesized peptide derived from human LEFTY1 + LEFTY2

**KD-Validated Anti-LEFTY1 + LEFTY2 Rabbit Monoclonal Antibody - Additional Information**

Gene ID	7044
<b>Other Names</b>	
Left-right determination factor 2, Endometrial bleeding-associated factor, Left-right determination factor A, Protein lefty-2, Protein lefty-A, Transforming growth factor beta-4, TGF-beta-4, LEFTY2, EBAF, LEFTA, LEFTYA, TGFB4	

**KD-Validated Anti-LEFTY1 + LEFTY2 Rabbit Monoclonal Antibody - Protein Information****Name** LEFTY2**Synonyms** EBAF, LEFTA, LEFTYA, TGFB4**Function**

Required for left-right (L-R) asymmetry determination of organ systems in mammals. May play a

role in endometrial bleeding.

**Cellular Location**  
Secreted.

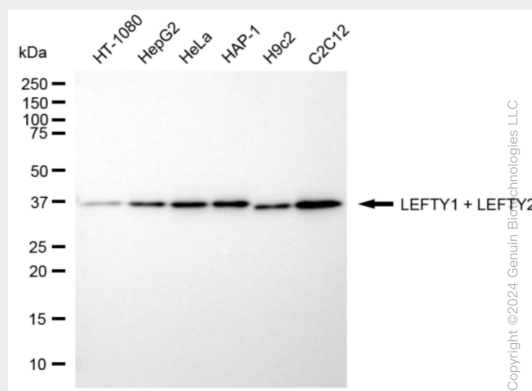
**Tissue Location**  
Mesenchymal cells of the endometrial stroma.

## KD-Validated Anti-LEFTY1 + LEFTY2 Rabbit Monoclonal Antibody - Protocols

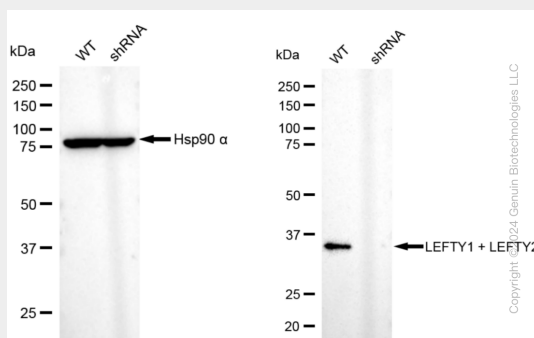
Provided below are standard protocols that you may find useful for product applications.

- [Western Blot](#)
- [Blocking Peptides](#)
- [Dot Blot](#)
- [Immunohistochemistry](#)
- [Immunofluorescence](#)
- [Immunoprecipitation](#)
- [Flow Cytometry](#)
- [Cell Culture](#)

## KD-Validated Anti-LEFTY1 + LEFTY2 Rabbit Monoclonal Antibody - Images

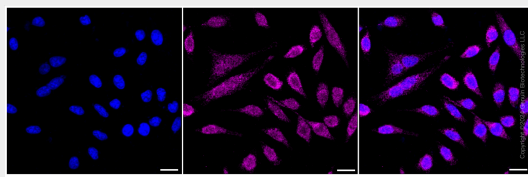


Western blotting analysis using anti-LEFTY1 + LEFTY2 antibody (Cat#AGI1068). Total cell lysates (30 µg) from various cell lines were loaded and separated by SDS-PAGE. The blot was incubated with anti-LEFTY1 + LEFTY2 antibody (Cat#AGI1068, 1:5,000) and HRP-conjugated goat anti-rabbit secondary antibody respectively.



Western blotting analysis using anti-LEFTY1 + LEFTY2 antibody (Cat#AGI1068). LEFTY1 + LEFTY2 expression in wild type (WT) and LEFTY1 + LEFTY2 shRNA knockdown (KD) HT-1080 cells with 20

µg of total cell lysates. Hsp90 α serves as a loading control. The blot was incubated with anti-LEFTY1 + LEFTY2 antibody (Cat#AGI1068, 1:5,000) and HRP-conjugated goat anti-rabbit secondary antibody respectively.



Immunocytochemical staining of HepG2 cells with anti-LEFTY1 + LEFTY2 antibody (Cat#AGI1068, 1:1,000). Nuclei were stained blue with DAPI; LEFTY1 + LEFTY2 was stained magenta with Alexa Fluor® 647. Images were taken using Leica stellaris 5. Protein abundance based on laser Intensity and smart gain: Low. Scale bar: 20 µm.