

KD-Validated Anti-PSMB10 Rabbit Monoclonal Antibody
Rabbit monoclonal antibody
Catalog # AGI1075**Specification****KD-Validated Anti-PSMB10 Rabbit Monoclonal Antibody - Product Information**

Application	WB, FC
Primary Accession	P40306
Reactivity	Rat, Human, Mouse
Clonality	Monoclonal
Isotype	Rabbit IgG
Calculated MW	Predicted, 29 kDa, observed, 27 kDa kDa
Gene Name	PSMB10
Aliases	PSMB10; Proteasome 20S Subunit Beta 10; LMP10; MECL1; Proteasome (Prosome, Macropain) Subunit, Beta Type, 10; Multicatalytic Endopeptidase Complex Subunit MECL-1; Proteasome Subunit Beta Type-10; Low Molecular Mass Protein 10; Proteasome Subunit Beta 10; Proteasome Subunit Beta-2i; Macropain Subunit MECL-1; Proteasome MECL-1; EC 3.4.25.1; MGC1665; Beta2i; Proteasome Catalytic Subunit 2i; Proteasome Subunit Beta 7i; Proteasome Subunit Beta2i; Proteasome Subunit MECL1; Proteasome Subunit B2i; PRAAS5; BETA2I
Immunogen	A synthesized peptide derived from human PSMB10

KD-Validated Anti-PSMB10 Rabbit Monoclonal Antibody - Additional Information

Gene ID	5699
Other Names	Proteasome subunit beta type-10, 3.4.25.1, Low molecular mass protein 10, Macropain subunit MECL-1, Multicatalytic endopeptidase complex subunit MECL-1, Proteasome MECL-1, Proteasome subunit beta-2i, PSMB10, LMP10, MECL1

KD-Validated Anti-PSMB10 Rabbit Monoclonal Antibody - Protein Information**Name** PSMB10**Synonyms** LMP10, MECL1**Function**

The proteasome is a multicatalytic proteinase complex which is characterized by its ability to cleave peptides with Arg, Phe, Tyr, Leu, and Glu adjacent to the leaving group at neutral or slightly basic pH. The proteasome has an ATP-dependent proteolytic activity. This subunit is involved in

antigen processing to generate class I binding peptides.

Cellular Location

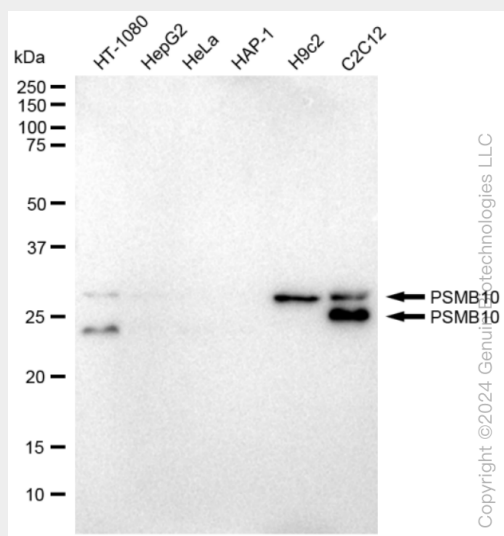
Cytoplasm {ECO:0000255|PROSITE-ProRule:PRU00809}. Nucleus

KD-Validated Anti-PSMB10 Rabbit Monoclonal Antibody - Protocols

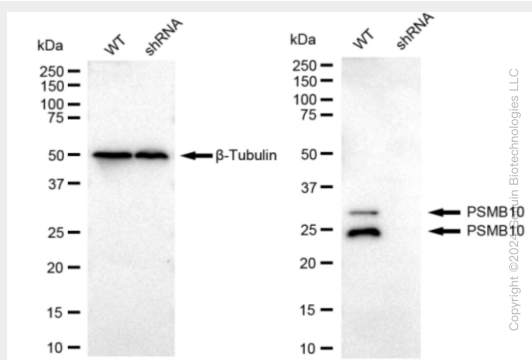
Provided below are standard protocols that you may find useful for product applications.

- [Western Blot](#)
- [Blocking Peptides](#)
- [Dot Blot](#)
- [Immunohistochemistry](#)
- [Immunofluorescence](#)
- [Immunoprecipitation](#)
- [Flow Cytometry](#)
- [Cell Culture](#)

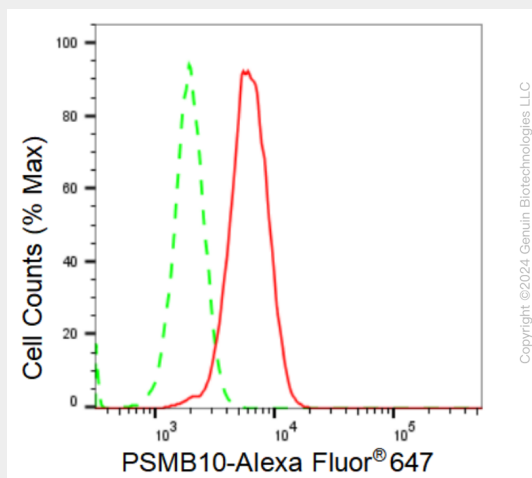
KD-Validated Anti-PSMB10 Rabbit Monoclonal Antibody - Images



Western blotting analysis using anti-PSMB10 antibody (Cat#AGI1075). Total cell lysates (30 µg) from various cell lines were loaded and separated by SDS-PAGE. The blot was incubated with anti-PSMB10 antibody (Cat#AGI1075, 1:5,000) and HRP-conjugated goat anti-rabbit secondary antibody respectively.



Western blotting analysis using anti-PSMB10 antibody (Cat#AGI1075). PSMB10 expression in wild type (WT) and PSMB10 shRNA knockdown (KD) Hela cells with 30 μ g of total cell lysates. β -Tubulin serves as a loading control. The blot was incubated with anti-PSMB10 antibody (Cat#AGI1075, 1:5,000) and HRP-conjugated goat anti-rabbit secondary antibody respectively.



Flow cytometric analysis of PSMB10 expression in H9c2 cells using PSMB10 antibody (Cat#AGI1075, 1:2,000). Green, isotype control; red, PSMB10.