

KD-Validated Anti-RAC3 Rabbit Monoclonal Antibody
Rabbit monoclonal antibody
Catalog # AGI1077**Specification**

KD-Validated Anti-RAC3 Rabbit Monoclonal Antibody - Product Information

Application	WB, FC, ICC
Primary Accession	P60763
Reactivity	Human, Mouse
Clonality	Monoclonal
Isotype	Rabbit IgG
Calculated MW	Predicted, 21 kDa, observed, 21 kDa
Gene Name	KDa RAC3
Aliases	RAC3; Rac Family Small GTPase 3; Ras-Related C3 Botulinum Toxin Substrate 3 (Rho Family, Small GTP Binding Protein Rac3); Ras-Related C3 Botulinum Toxin Substrate 3; P21-Rac3; Rho Family, Small GTP Binding Protein Rac3; EC 3.6.5.2
Immunogen	A synthesized peptide derived from human RAC3

KD-Validated Anti-RAC3 Rabbit Monoclonal Antibody - Additional Information

Gene ID	5881
Other Names	
Ras-related C3 botulinum toxin substrate 3, 3.6.5.2, p21-Rac3, RAC3 (HGNC:9803)	

KD-Validated Anti-RAC3 Rabbit Monoclonal Antibody - Protein Information**Name** RAC3 ([HGNC:9803](#))**Function**

Plasma membrane-associated small GTPase which cycles between an active GTP-bound and inactive GDP-bound state. In active state binds to a variety of effector proteins to regulate cellular responses, such as cell spreading and the formation of actin-based protrusions including lamellipodia and membrane ruffles. Promotes cell adhesion and spreading on fibrinogen in a CIB1 and alpha-IIb/beta3 integrin-mediated manner.

Cellular Location

Cytoplasm. Endomembrane system. Cell projection, lamellipodium. Cytoplasm, perinuclear region. Cell membrane. Cytoplasm, cytoskeleton. Note=Membrane-associated when activated. Colocalizes with NRBP to endomembranes and at the cell periphery in lamellipodia Colocalized with CIB1 in the perinuclear area and at the cell periphery

Tissue Location

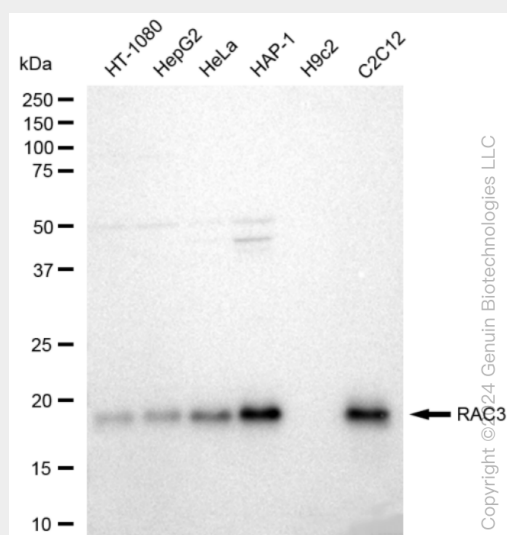
Highest levels in brain, also detected in heart, placenta and pancreas

KD-Validated Anti-RAC3 Rabbit Monoclonal Antibody - Protocols

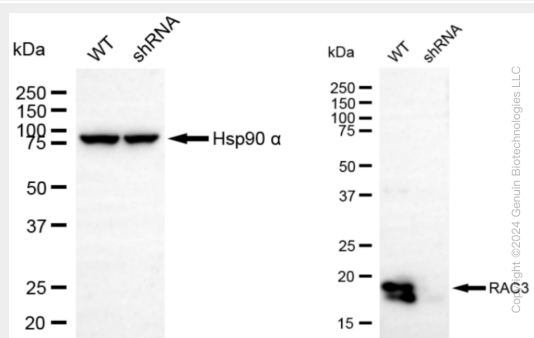
Provided below are standard protocols that you may find useful for product applications.

- [Western Blot](#)
- [Blocking Peptides](#)
- [Dot Blot](#)
- [Immunohistochemistry](#)
- [Immunofluorescence](#)
- [Immunoprecipitation](#)
- [Flow Cytometry](#)
- [Cell Culture](#)

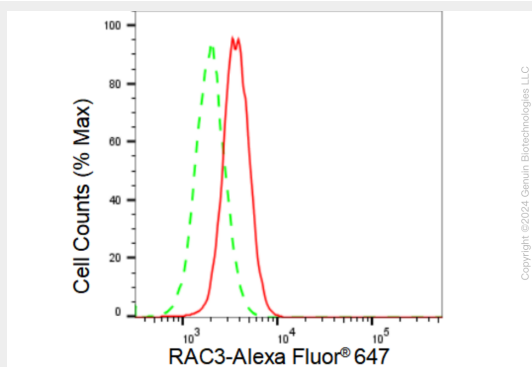
KD-Validated Anti-RAC3 Rabbit Monoclonal Antibody - Images



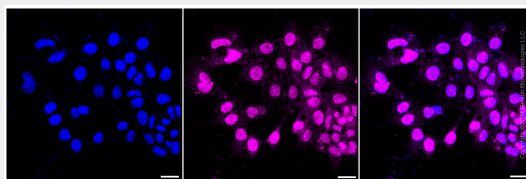
Western blotting analysis using anti-RAC3 antibody (Cat#AGI1077). Total cell lysates (30 µg) from various cell lines were loaded and separated by SDS-PAGE. The blot was incubated with anti-PSMB10 antibody (Cat#AGI1077, 1:5,000) and HRP-conjugated goat anti-rabbit secondary antibody respectively.



Western blotting analysis using anti-RAC3 antibody (Cat#AGI1077). RAC3 expression in wild type (WT) and RAC3 shRNA knockdown (KD) HeLa cells with 30 µg of total cell lysates. β-Tubulin serves as a loading control. The blot was incubated with anti-RAC3 antibody (Cat#AGI1077, 1:5,000) and HRP-conjugated goat anti-rabbit secondary antibody respectively.



Flow cytometric analysis of RAC3 expression in HAP-1 cells using RAC3 antibody (Cat#AGI1077, 1:2,000). Green, isotype control; red, RAC3.



Immunocytochemical staining of HAP-1 cells with RAC3 antibody (Cat#AGI1077, 1:1,000). Nuclei were stained blue with DAPI; RAC3 was stained magenta with Alexa Fluor® 647. Images were taken using Leica stellaris 5. Protein abundance based on laser Intensity and smart gain: Medium. Scale bar: 20 μ m.