

KD-Validated Anti-Pancreatic proteinase 1 Rabbit Monoclonal Antibody
Rabbit monoclonal antibody
Catalog # AGI1080**Specification**

KD-Validated Anti-Pancreatic proteinase 1 Rabbit Monoclonal Antibody - Product Information

Application	WB, FC, ICC
Primary Accession	P00492
Reactivity	Rat, Human, Mouse
Clonality	Monoclonal
Isotype	Rabbit IgG
Calculated MW	Predicted, 25 kDa, observed, 25 kDa kDa
Gene Name	HPRT1
Aliases	HPRT1; Hypoxanthine Phosphoribosyltransferase 1; HGPRT; HPRT; Hypoxanthine Guanine Phosphoribosyl Transferase; Hypoxanthine-Guanine Phosphoribosyltransferase; EC 2.4.2.8; HGPRTase; Hypoxanthine-Guanine Phosphoribosyltransferase 1; Testicular Tissue Protein Li 89; Lesch-Nyhan Syndrome
Immunogen	A synthesized peptide derived from human HPRT

KD-Validated Anti-Pancreatic proteinase 1 Rabbit Monoclonal Antibody - Additional Information

Gene ID	3251
Other Names	
Hypoxanthine-guanine phosphoribosyltransferase, HGPRT, HGPRTase, 2.4.2.8, HPRT1, HPRT	

KD-Validated Anti-Pancreatic proteinase 1 Rabbit Monoclonal Antibody - Protein Information**Name** HPRT1**Synonyms** HPRT**Function**

Converts guanine to guanosine monophosphate, and hypoxanthine to inosine monophosphate. Transfers the 5-phosphoribosyl group from 5- phosphoribosylpyrophosphate onto the purine. Plays a central role in the generation of purine nucleotides through the purine salvage pathway.

Cellular Location

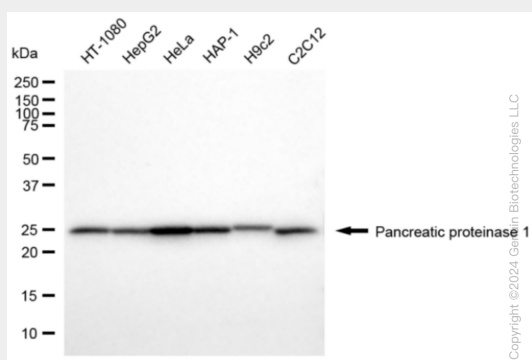
Cytoplasm.

KD-Validated Anti-Pancreatic proteinase 1 Rabbit Monoclonal Antibody - Protocols

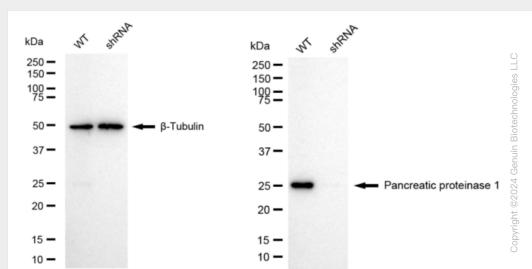
Provided below are standard protocols that you may find useful for product applications.

- [Western Blot](#)
- [Blocking Peptides](#)
- [Dot Blot](#)
- [Immunohistochemistry](#)
- [Immunofluorescence](#)
- [Immunoprecipitation](#)
- [Flow Cytometry](#)
- [Cell Culture](#)

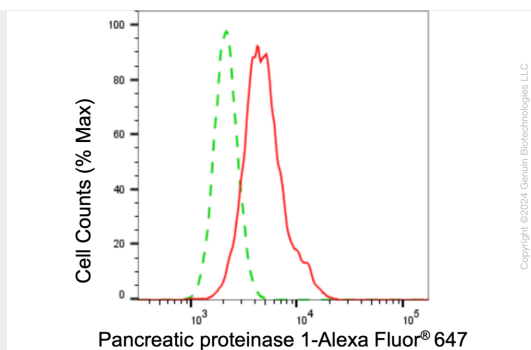
KD-Validated Anti-Pancreatic proteinase 1 Rabbit Monoclonal Antibody - Images



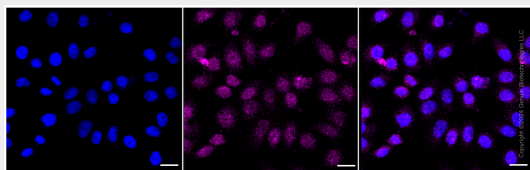
Western blotting analysis using anti-pancreatic proteinase 1 antibody (Cat#AGI1080). Total cell lysates (30 µg) from various cell lines were loaded and separated by SDS-PAGE. The blot was incubated with anti-pancreatic proteinase 1 antibody (Cat#AGI1080, 1:5,000) and HRP-conjugated goat anti-rabbit secondary antibody respectively.



Western blotting analysis using anti-pancreatic proteinase 1 antibody (Cat#AGI1080). Pancreatic proteinase 1 expression in wild-type (WT) and pancreatic proteinase 1 (HPRT1) shRNA knockdown (KD) HeLa cells with 20 µg of total cell lysates. Hsp90 α serves as a loading control. The blot was incubated with anti-pancreatic proteinase 1 antibody (Cat#AGI1080, 1:5,000) and HRP-conjugated goat anti-rabbit secondary antibody respectively.



Flow cytometric analysis of pancreatic proteinase 1 expression in HepG2 cells using pancreatic proteinase 1 antibody (Cat#AGI1080, 1:2,000). Green, isotype control; red, pancreatic proteinase 1.



Immunocytochemical staining of HepG2 cells with anti-pancreatic proteinase 1 antibody (Cat#AGI1080, 1:1,000). Nuclei were stained blue with DAPI; Pancreatic proteinase 1 was stained magenta with Alexa Fluor® 647. Images were taken using Leica stellaris 5. Protein abundance based on laser Intensity and smart gain: Medium. Scale bar: 20 μ m.