

**KD-Validated Anti-KLF Transcription Factor 4 Mouse Monoclonal Antibody**  
**Mouse monoclonal antibody**  
**Catalog # AGI1094****Specification****KD-Validated Anti-KLF Transcription Factor 4 Mouse Monoclonal Antibody - Product Information**

Application	WB
Primary Accession	<a href="#">O43474</a>
Reactivity	Rat, Human, Mouse
Clonality	Monoclonal
Isotype	Mouse IgG2b kappa
Calculated MW	Predicted, 55 kDa, observed, 70 kDa kDa
Gene Name	KLF4
Aliases	KLF4; KLF Transcription Factor 4; GKLF; EZF; Epithelial Zinc Finger Protein EZF; Gut-Enriched Krueppel-Like Factor; Kruppel-Like Factor 4 (Gut); Gut Kruppel-Like Factor; Krueppel-Like Factor 4; Kruppel Like Factor 4; Endothelial Kruppel-Like Zinc Finger Protein
Immunogen	Recombinant protein of human KLF4

**KD-Validated Anti-KLF Transcription Factor 4 Mouse Monoclonal Antibody - Additional Information**

Gene ID	9314
<b>Other Names</b>	
Krueppel-like factor 4, Epithelial zinc finger protein EZF, Gut-enriched krueppel-like factor, KLF4 ( <a href="http://www.genenames.org/cgi-bin/gene_symbol_report?hgnc_id=6348">http://www.genenames.org/cgi-bin/gene_symbol_report?hgnc_id=6348</a> ) target="_blank">HGNC:6348</a>), EZF, GKLF	

**KD-Validated Anti-KLF Transcription Factor 4 Mouse Monoclonal Antibody - Protein Information****Name** KLF4 ([HGNC:6348](#))**Synonyms** EZF, GKLF**Function**

Transcription factor; can act both as activator and as repressor. Binds the 5'-CACCC-3' core sequence. Binds to the promoter region of its own gene and can activate its own transcription. Regulates the expression of key transcription factors during embryonic development. Plays an important role in maintaining embryonic stem cells, and in preventing their differentiation. Required for establishing the barrier function of the skin and for postnatal maturation and maintenance of the ocular surface. Involved in the differentiation of epithelial cells and may also function in skeletal and kidney development. Contributes to the down-regulation of p53/TP53 transcription.

## Cellular Location

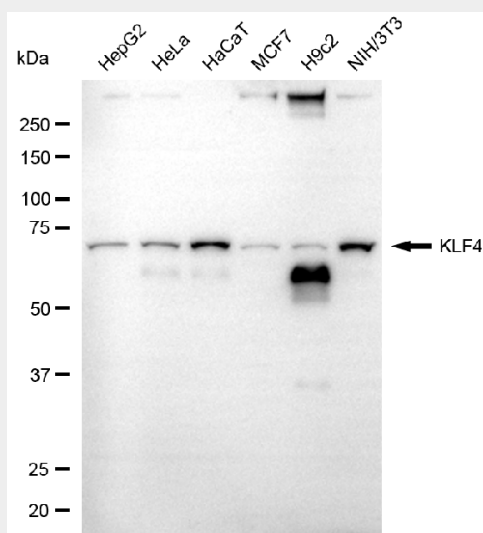
Nucleus {ECO:0000250|UniProtKB:Q60793}. Cytoplasm {ECO:0000250|UniProtKB:Q60793}

## KD-Validated Anti-KLF Transcription Factor 4 Mouse Monoclonal Antibody - Protocols

Provided below are standard protocols that you may find useful for product applications.

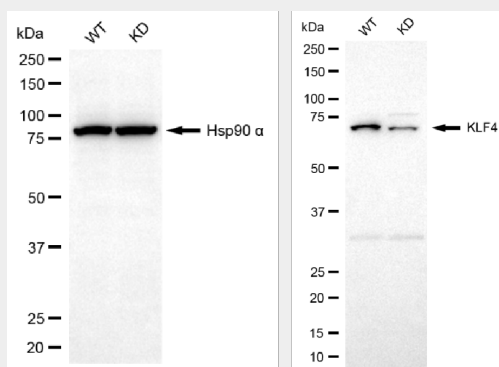
- [Western Blot](#)
- [Blocking Peptides](#)
- [Dot Blot](#)
- [Immunohistochemistry](#)
- [Immunofluorescence](#)
- [Immunoprecipitation](#)
- [Flow Cytometry](#)
- [Cell Culture](#)

## KD-Validated Anti-KLF Transcription Factor 4 Mouse Monoclonal Antibody - Images



Copyright ©2025 Genuin Biotechnologies LLC

Western blotting analysis using anti-KLF4 antibody (Cat#AGI1094). Total cell lysates (30 µg) from various cell lines were loaded and separated by SDS-PAGE. The blot was incubated with anti-KLF4 antibody (Cat#AGI1094, 1:5,000) and HRP-conjugated goat anti-mouse secondary antibody respectively.



Copyright ©2025 Genuin Biotechnologies LLC

Western blotting analysis using anti-KLF4 antibody (Cat#AGI1094). KLF4 expression in wild type (WT) and KLF4 knockdown (KD) HeLa cells with 20 µg of total cell lysates. Hsp90 α serves as a

loading control. The blot was incubated with anti-KLF4 antibody (Cat#AGI1094, 1:5,000) and HRP-conjugated goat anti-mouse secondary antibody respectively.