

KD-Validated Anti-SRY-Box Transcription Factor 10 Rabbit Monoclonal Antibody
Rabbit monoclonal antibody
Catalog # AGI1096**Specification****KD-Validated Anti-SRY-Box Transcription Factor 10 Rabbit Monoclonal Antibody - Product Information**

Application	WB, FC
Primary Accession	P56693
Reactivity	Human, Mouse
Clonality	Monoclonal
Isotype	Rabbit IgG
Calculated MW	Predicted, 50 kDa, observed, 55 kDa kDa
Gene Name	SOX10
Aliases	SOX10; SRY-Box Transcription Factor 10; SOX-10; WS2E; DOM; WS4; Dominant Megacolon, Mouse, Human Homolog Of; SRY (Sex Determining Region Y)-Box 10; Transcription Factor SOX-10; SRY-Box 10; SRY-Related HMG-Box Gene 10; PCWH; WS4C
Immunogen	A synthesized peptide derived from human SOX10

KD-Validated Anti-SRY-Box Transcription Factor 10 Rabbit Monoclonal Antibody - Additional Information

Gene ID	6663
Other Names	
Transcription factor SOX-10, SOX10	

KD-Validated Anti-SRY-Box Transcription Factor 10 Rabbit Monoclonal Antibody - Protein Information**Name** SOX10**Function**

Transcription factor that plays a central role in developing and mature glia (By similarity). Specifically activates expression of myelin genes, during oligodendrocyte (OL) maturation, such as DUSP15 and MYRF, thereby playing a central role in oligodendrocyte maturation and CNS myelination (By similarity). Once induced, MYRF cooperates with SOX10 to implement the myelination program (By similarity). Transcriptional activator of MITF, acting synergistically with PAX3 (PubMed: <http://www.uniprot.org/citations/21965087> target="_blank">21965087). Transcriptional activator of MBP, via binding to the gene promoter (By similarity).

Cellular Location

Cytoplasm. Nucleus. Mitochondrion outer membrane {ECO:0000250|UniProtKB:Q04888};

Peripheral membrane protein {ECO:0000250|UniProtKB:Q04888}; Cytoplasmic side {ECO:0000250|UniProtKB:Q04888}

Tissue Location

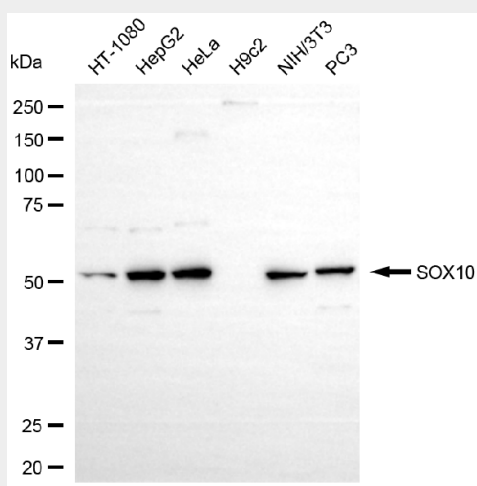
Expressed in fetal brain and in adult brain, heart, small intestine and colon

KD-Validated Anti-SRY-Box Transcription Factor 10 Rabbit Monoclonal Antibody - Protocols

Provided below are standard protocols that you may find useful for product applications.

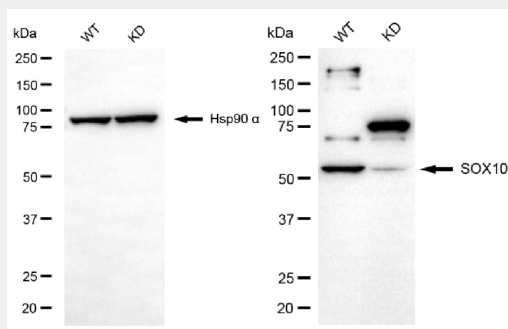
- [Western Blot](#)
- [Blocking Peptides](#)
- [Dot Blot](#)
- [Immunohistochemistry](#)
- [Immunofluorescence](#)
- [Immunoprecipitation](#)
- [Flow Cytometry](#)
- [Cell Culture](#)

KD-Validated Anti-SRY-Box Transcription Factor 10 Rabbit Monoclonal Antibody - Images



Copyright ©2025 Genuin Biotechnologies LLC

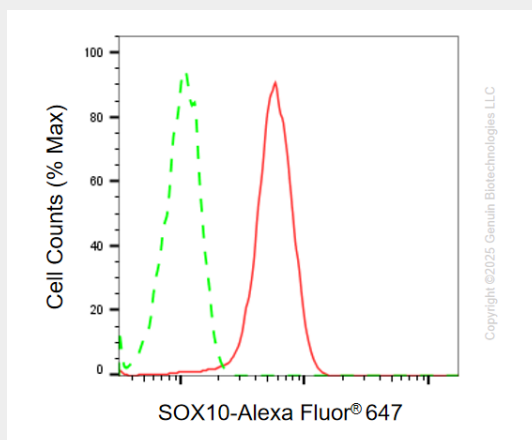
Western blotting analysis using anti-SOX10 antibody (Cat#AGI1096). Total cell lysates (30 µg) from various cell lines were loaded and separated by SDS-PAGE. The blot was incubated with anti-SOX10 antibody (Cat#AGI1096, 1:5,000) and HRP-conjugated goat anti-rabbit secondary antibody respectively.



Copyright ©2025 Genuin Biotechnologies LLC

Western blotting analysis using anti-SOX10 antibody (Cat#AGI1096). SOX10 expression in wild

type (WT) and SOX10 knockdown (KD) HSHC cells with 20 µg of total cell lysates. Hsp90 α serves as a loading control. The blot was incubated with anti-SOX10 antibody (Cat#AGI1096, 1:5,000) and HRP-conjugated goat anti-rabbit secondary antibody respectively.



Flow cytometric analysis of SOX10 expression in HepG2 cells using anti-SOX10 antibody (Cat# AGI1096, 1:2,000). Green, isotype control; red, SOX10.